

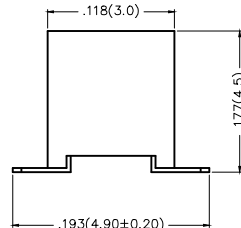
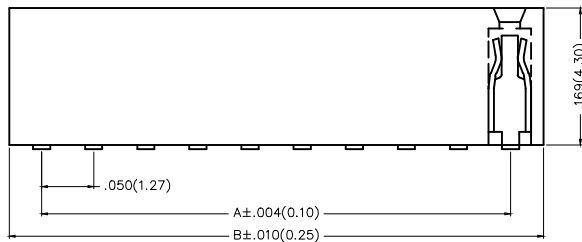
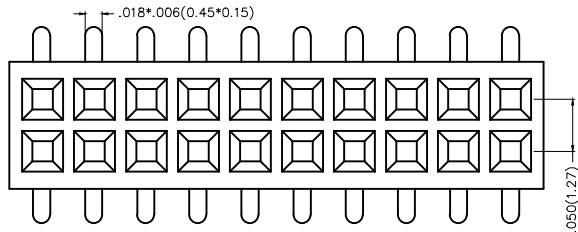
REV	LOCATIONS	DESCRIPTION	DATE	REVISER	APPD

**Electrical**

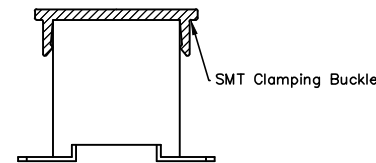
Current Rating: 1A AC(rms)/DC  
Voltage Rating: 250V AC(rms)/DC  
Contact Resistance: 20 mΩ Max  
Insulation Resistance: 500 MΩ MIN  
Withstanding Voltage: 100V AC r.m.s  
Temperature Range—Operating: -25°C~+85°C

**Material and Plating**

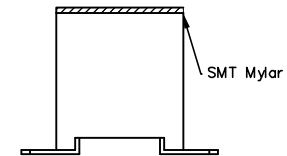
Housing: LCP/PA6T( UL 94V-0)  
Contact Pin: Brass  
Plating: Gold Plated/Selective gold in contact area, tin on tail



Packing: M—Reel(With Cap)



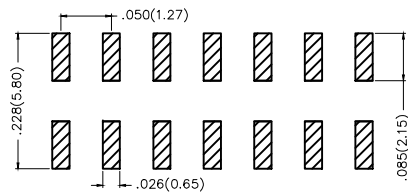
Packing: M1—Reel(With Mylar)



**Ordering Information**

FFH 127 13 — D XX S X XX X K6 XX  
1 2 3 4 5 6 7 8 9 10 11

- 1 Category: FFH—Female Header
- 2 Series Number: 127—Pitch1.27mm
- 3 Distinction No.: 13
- 4 Row Option: D—Double Row
- 5 Circuits: XX
- 6 Entry Angle: S—180° Vertical
- 7 Plating: 1—Gold Plated, 3—Selective gold in contact area, tin on tail
- 8 Thickness of Plating: 00—Gold Flash, 05—5μ", Custom plate available
- 9 Material—Resin: 3—LCP, 4—PA6T, 5—PA9T
- 10 Color—Resin: K6—Black
- 11 Packaging: M—Reel(With Cap), M1—Reel(With Mylar), L—Tube





Recommended P.C.Board Layout

 THIRD ANGLE PROJECTION	GENERAL TOLERANCES (UNLESS SPECIFIED)		APPROVE BY FRANK	DATE 10/JUL/13	PART NO. FFH12713-DXXSXXXXK6XX	ITEM NO. FFH12713	 Leader Of Industry	
	DESIGN UNITS Inch (metric)	X±.012(0.30) X.X±.010(0.25) X.XX±.008(0.20) X.XXX±.004(0.10)	.X'±5' .X'±2' .XX'±1' .XXX'±0.5'	CHECKED BY CHERRY	DATE 10/JUL/13	TITLE Board to Board (Female Header) Pitch 1.27mm 180° Vertical (SMT)		REV 0
SCALE 5:1	SIZE A4	DRAWN BY JACOB		DATE 10/JUL/13	THIS DRAWING CONTAINS INFORMATION THAT IS PROPRIETARY TO TXGA INDUSTRIAL ELECTRONICS(S.Z)CO.,LTD AND SHOULD NOT BE USED WITHOUT WRITTEN PERMISSION			

REV	LOCATIONS	DESCRIPTION	DATE	REVISER	APPD

Circuits (n)	Part No.	Dimensions(in/mm)		Circuits (n)	Part No.	Dimensions(in/mm)	
		A	B			A	B
6	FFH12713-D06SXXXXK6XX	.100(2.54)	.164(4.16)	54	FFH12713-D54SXXXXK6XX	1.300(33.02)	1.364(34.64)
8	FFH12713-D08SXXXXK6XX	.150(3.81)	.214(5.43)	56	FFH12713-D56SXXXXK6XX	1.350(34.29)	1.414(35.91)
10	FFH12713-D10SXXXXK6XX	.200(5.08)	.264(6.70)	58	FFH12713-D58SXXXXK6XX	1.400(35.56)	1.464(37.18)
12	FFH12713-D12SXXXXK6XX	.250(6.35)	.314(7.97)	60	FFH12713-D60SXXXXK6XX	1.450(36.83)	1.514(38.45)
14	FFH12713-D14SXXXXK6XX	.300(7.62)	.364(9.24)	62	FFH12713-D62SXXXXK6XX	1.500(38.10)	1.564(39.72)
16	FFH12713-D16SXXXXK6XX	.350(8.89)	.414(10.51)	64	FFH12713-D64SXXXXK6XX	1.550(39.37)	1.614(40.99)
18	FFH12713-D18SXXXXK6XX	.400(10.16)	.464(11.78)	66	FFH12713-D66SXXXXK6XX	1.600(40.64)	1.664(42.26)
20	FFH12713-D20SXXXXK6XX	.450(11.43)	.514(13.05)	68	FFH12713-D68SXXXXK6XX	1.650(41.91)	1.714(43.53)
22	FFH12713-D22SXXXXK6XX	.500(12.70)	.564(14.32)	70	FFH12713-D70SXXXXK6XX	1.700(43.18)	1.764(44.80)
24	FFH12713-D24SXXXXK6XX	.550(13.97)	.614(15.59)	72	FFH12713-D72SXXXXK6XX	1.750(44.45)	1.814(46.07)
26	FFH12713-D26SXXXXK6XX	.600(15.24)	.664(16.86)	74	FFH12713-D74SXXXXK6XX	1.800(45.72)	1.864(47.34)
28	FFH12713-D28SXXXXK6XX	.650(16.51)	.714(18.13)	76	FFH12713-D76SXXXXK6XX	1.850(46.99)	1.914(48.61)
30	FFH12713-D30SXXXXK6XX	.700(17.78)	.764(19.40)	78	FFH12713-D78SXXXXK6XX	1.900(48.26)	1.964(49.88)
32	FFH12713-D32SXXXXK6XX	.750(19.05)	.814(20.67)	80	FFH12713-D80SXXXXK6XX	1.950(49.53)	2.014(51.55)
34	FFH12713-D34SXXXXK6XX	.800(20.32)	.864(21.94)	82	FFH12713-D82SXXXXK6XX	2.000(50.80)	2.064(52.42)
36	FFH12713-D36SXXXXK6XX	.850(21.59)	.914(23.21)	84	FFH12713-D84SXXXXK6XX	2.050(52.07)	2.114(53.69)
38	FFH12713-D38SXXXXK6XX	.900(22.86)	.964(24.48)	86	FFH12713-D86SXXXXK6XX	2.100(53.34)	2.164(54.69)
40	FFH12713-D40SXXXXK6XX	.950(24.13)	1.014(25.75)	88	FFH12713-D88SXXXXK6XX	2.150(54.61)	2.214(56.23)
42	FFH12713-D42SXXXXK6XX	1.000(25.40)	1.064(27.02)	90	FFH12713-D90SXXXXK6XX	2.200(55.88)	2.264(57.50)
44	FFH12713-D44SXXXXK6XX	1.050(26.67)	1.114(28.29)	92	FFH12713-D92SXXXXK6XX	2.250(57.15)	2.314(58.77)
46	FFH12713-D46SXXXXK6XX	1.100(27.94)	1.164(29.56)	94	FFH12713-D94SXXXXK6XX	2.300(58.42)	2.364(60.04)
48	FFH12713-D48SXXXXK6XX	1.150(29.21)	1.214(30.83)	96	FFH12713-D96SXXXXK6XX	2.350(59.69)	2.414(61.31)
50	FFH12713-D50SXXXXK6XX	1.200(30.48)	1.264(32.10)	98	FFH12713-D98SXXXXK6XX	2.400(60.96)	2.464(62.58)
52	FFH12713-D52SXXXXK6XX	1.250(31.75)	1.314(33.37)	100	FFH12713-D100SXXXXK6XX	2.450(62.23)	2.514(63.85)

 THIRD ANGLE PROJECTION	GENERAL TOLERANCES (UNLESS SPECIFIED)		APPROVE BY FRANK	DATE 10/JUL/13	PART NO. FFH12713-DXXSXXXXK6XX	ITEM NO. FFH12713	 Leader Of Industry	
	X.±.012(0.30)	X.'±5'	CHECKED BY CHERRY	DATE 10/JUL/13	TITLE Board to Board (Female Header) Pitch 1.27mm 180° Vertical (SMT)			REV 0
	DESIGN UNITS Inch (metric)	X.XX±.010(0.25)	.X'±2'	DRAWN BY JACOB	DATE 10/JUL/13	THIS DRAWING CONTAINS INFORMATION THAT IS PROPRIETARY TO TXGA INDUSTRIAL ELECTRONICS(S.Z)CO.,LTD AND SHOULD NOT BE USED WITHOUT WRITTEN PERMISSION		
	SCALE 5:1	SIZE A4	X.XX±.008(0.20)	.XX'±1'	X.XXX±.004(0.10)	.XXX'±0.5'		

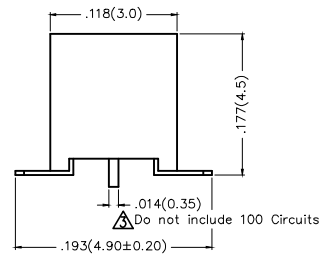
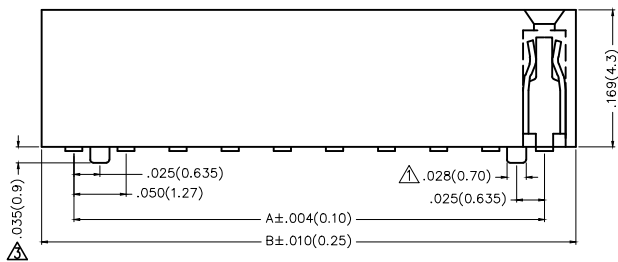
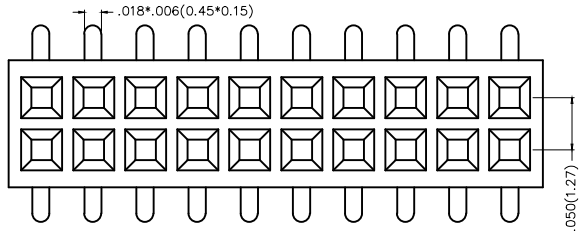
REV	LOCATIONS	DESCRIPTION	DATE	REVISER	APPD
1	△	Change the positioning column	02/June/15	KEVIN	FRANK
2	△	Part No. FFH12714 Change to FFH12713A	02/Sep/15	CHERRY	FRANK
3	△	Size changes	13/MAY/20	KATE	CHERRY

Electrical

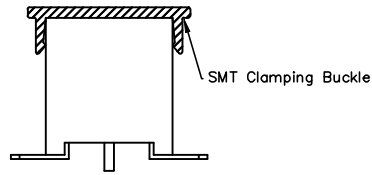
Current Rating: 1A AC(rms)/DC  
Voltage Rating: 250V AC(rms)/DC  
Contact Resistance: 20 m Ω Max  
Insulation Resistance: 500 M Ω MIN  
Withstanding Voltage: 100V AC r.m.s  
Temperature Range—Operating: -40°C~+105°C

Material and Plating

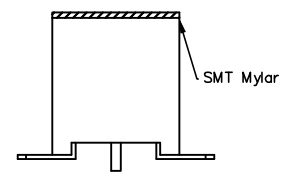
Housing: LCP/PA6T( UL 94V-0)  
Contact Pin: Brass  
Plating: Gold plated/ Selective gold plated on contact area and 120μ" Min. matte tin plated on tails area



Packing: M—Reel(With Cap)



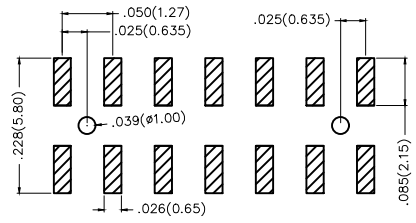
Packing: M1—Reel(With Mylar)



Ordering Information

FFH 127 13 — D XX S X XX 4 K6 XX A  
1 2 3 4 5 6 7 8 9 10 11 12

1	Category FFH—Female Header	2	Series Number 127—Pitch1.27mm	3	Distinction No. 13	4	Row Option D—Double Row	5	Circuits XX	6	Entry Angle S—180° Vertical
7	Plating 1—Gold plated 7—Selective gold plated on contact area and matte tin plated on tails area	8	Thickness of Plating 00—Gold Flash 05—5μ" Custom plate available	9	Material—Resin 3—LCP 4—PA6T 5—PA9T	10	Color—Resin K6—Black	11	Packaging M—Reel(With Cap) M1—Reel(With Mylar) L—Tube	12	Type A—With Position

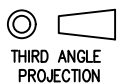



Recommended P.C.Board Layout

 <b>THIRD ANGLE PROJECTION</b>	GENERAL TOLERANCES (UNLESS SPECIFIED)		APPROVE BY FRANK	DATE 10/JUL/13	PART NO. △ FFH12713-DXXSXXX4K6XXA	ITEM NO. FFH12713	 <b>TXGA</b> Leader Of Industry	
	DESIGN UNITS Inch (metric)	X.±.012(0.30) X.X±.010(0.25) X.XX±.008(0.20) X.XXX±.004(0.10)	X'.±5' .X'±2' .XX'±1' .XXX'±0.5'	CHECKED BY CHERRY	DATE 10/JUL/13	TITLE Board to Board (Female Header) Pitch 1.27mm 180° Vertical (SMT)		REV 3
	SCALE 5:1	SIZE A4		DRAWN BY JACOB	DATE 10/JUL/13	THIS DRAWING CONTAINS INFORMATION THAT IS PROPRIETARY TO TXGA INDUSTRIAL ELECTRONICS(S.Z)CO.,LTD AND SHOULD NOT BE USED WITHOUT WRITTEN PERMISSION		

REV	LOCATIONS	DESCRIPTION	DATE	REVISER	APPD

Circuits (n)	Part No. $\Delta$	Dimensions(in/mm)		Circuits (n)	Part No. $\Delta$	Dimensions(in/mm)	
		A	B			A	B
8	FFH12713-D08SXXXXK6XXA	.150(3.81)	.214(5.43)	46	FFH12713-D46SXXXXK6XXA	1.100(27.94)	1.164(29.56)
10	FFH12713-D10SXXXXK6XXA	.200(5.08)	.264(6.70)	48	FFH12713-D48SXXXXK6XXA	1.150(29.21)	1.214(30.83)
12	FFH12713-D12SXXXXK6XXA	.250(6.35)	.314(7.97)	50	FFH12713-D50SXXXXK6XXA	1.200(30.48)	1.264(32.10)
14	FFH12713-D14SXXXXK6XXA	.300(7.62)	.364(9.24)	52	FFH12713-D52SXXXXK6XXA	1.250(31.75)	1.314(33.37)
16	FFH12713-D16SXXXXK6XXA	.350(8.89)	.414(10.51)	54	FFH12713-D54SXXXXK6XXA	1.300(33.02)	1.364(34.64)
18	FFH12713-D18SXXXXK6XXA	.400(10.16)	.464(11.78)	56	FFH12713-D56SXXXXK6XXA	1.350(34.29)	1.414(35.91)
20	FFH12713-D20SXXXXK6XXA	.450(11.43)	.514(13.05)	58	FFH12713-D58SXXXXK6XXA	1.400(35.56)	1.464(37.18)
22	FFH12713-D22SXXXXK6XXA	.500(12.70)	.564(14.32)	60	FFH12713-D60SXXXXK6XXA	1.450(36.83)	1.514(38.45)
24	FFH12713-D24SXXXXK6XXA	.550(13.97)	.614(15.59)	62	FFH12713-D62SXXXXK6XXA	1.500(38.10)	1.564(39.72)
26	FFH12713-D26SXXXXK6XXA	.600(15.24)	.664(16.86)	64	FFH12713-D64SXXXXK6XXA	1.550(39.37)	1.614(40.99)
28	FFH12713-D28SXXXXK6XXA	.650(16.51)	.714(18.13)	66	FFH12713-D66SXXXXK6XXA	1.600(40.64)	1.664(42.26)
30	FFH12713-D30SXXXXK6XXA	.700(17.78)	.764(19.40)	68	FFH12713-D68SXXXXK6XXA	1.650(41.91)	1.714(43.53)
32	FFH12713-D32SXXXXK6XXA	.750(19.05)	.814(20.67)	70	FFH12713-D70SXXXXK6XXA	1.700(43.18)	1.764(44.80)
34	FFH12713-D34SXXXXK6XXA	.800(20.32)	.864(21.94)	72	FFH12713-D72SXXXXK6XXA	1.750(44.45)	1.814(46.07)
36	FFH12713-D36SXXXXK6XXA	.850(21.59)	.914(23.21)	74	FFH12713-D74SXXXXK6XXA	1.800(45.72)	1.864(47.34)
38	FFH12713-D38SXXXXK6XXA	.900(22.86)	.964(24.48)	76	FFH12713-D76SXXXXK6XXA	1.850(46.99)	1.914(48.61)
40	FFH12713-D40SXXXXK6XXA	.950(24.13)	1.014(25.75)	78	FFH12713-D78SXXXXK6XXA	1.900(48.26)	1.964(49.88)
42	FFH12713-D42SXXXXK6XXA	1.000(25.40)	1.064(27.02)	80	FFH12713-D80SXXXXK6XXA	1.950(49.53)	2.014(51.55)
44	FFH12713-D44SXXXXK6XXA	1.050(26.67)	1.114(28.29)	100	FFH12713-D100SXXXXK6XXA	2.450(62.23)	2.514(63.85)

 THIRD ANGLE PROJECTION	GENERAL TOLERANCES (UNLESS SPECIFIED)		APPROVE BY FRANK	DATE 10/JUL/13	PART NO. $\Delta$ FFH12713-DXXSXXX4K6XXA	ITEM NO. FFH12713	 Leader Of Industry	
	X.±.012(0.30)	X.'±5'	CHECKED BY CHERRY	DATE 10/JUL/13	TITLE Board to Board (Female Header) Pitch 1.27mm 180° Vertical (SMT)	REV 3		SHEET NO. 2/2
	DESIGN UNITS Inch (metric)	X.X±.010(0.25)	.X'±2'	DRAWN BY JACOB	DATE 10/JUL/13	THIS DRAWING CONTAINS INFORMATION THAT IS PROPRIETARY TO TXGA INDUSTRIAL ELECTRONICS(S.Z)CO.,LTD AND SHOULD NOT BE USED WITHOUT WRITTEN PERMISSION		
	SCALE 5:1	SIZE A4	X.XX±.008(0.20)	X.XX±1'	X.XXX±.004(0.10)	X.XX±0.5'		