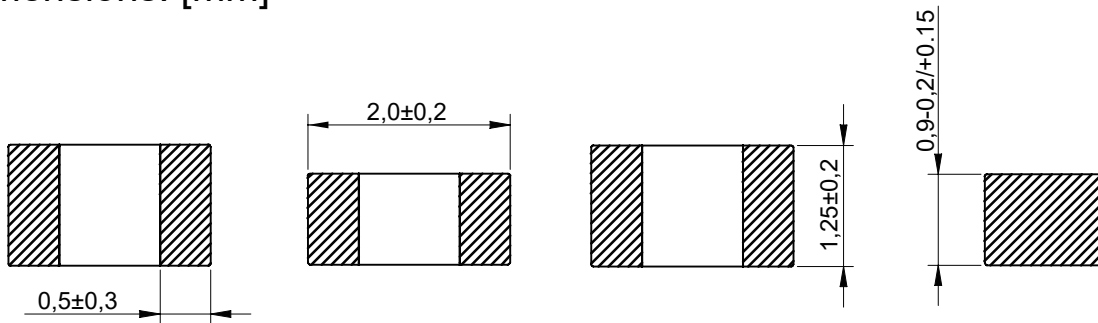
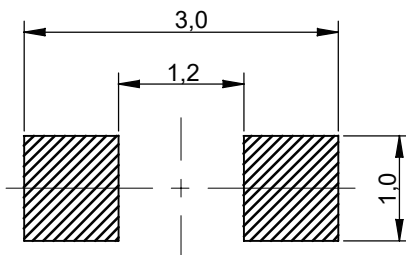


Dimensions: [mm]



Recommended Land Pattern: [mm]




Electrical Properties:

Properties	Z ( $\Omega$ )	I <sub>R</sub> (mA)	R <sub>DC</sub> ( $\Omega$ )
Value	600	200	0.65
Tolerance	$\pm 25\%$	max.	max.
Test Condition	100MHz/500mV	$\Delta T = 40^\circ C$	

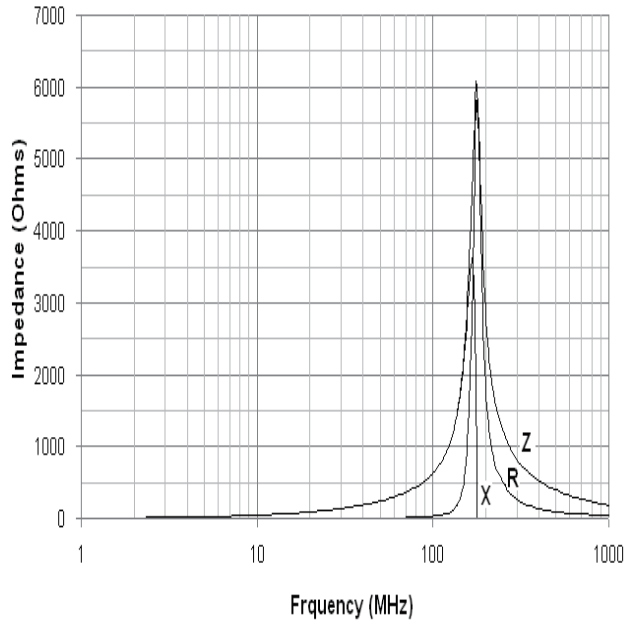
General Information:


Test conditions of Electrical Properties:  $20 \pm 15^\circ C$ , 30~70%RH  
 Operating Temperature:  $-55^\circ C$  to  $+125^\circ C$   
 Storage Temperature:  $-40^\circ C$  to  $+85^\circ C$

				UNIT: MM	 KOHER (Shanghai) Electronic Co.,Ltd
				SCALE:	
				SHEET: 1/2	
				APPROVAL: MAX	
				SIZE:	DESCRIPTION: SMD EMI Suppression Ferrite Bead
A	15-OCT-18	PDF	ZXG	PACKING UNIT: 4000 pcs	PART NO: FBSHS0805-601-201HR
REV	DATE	FILE	BY		

Typical Electrical Characteristics:

Impedance VS. Frequency Characteristics:



				UNIT: MM	 KOHER (Shanghai) Electronic Co.,Ltd
				SCALE:	
				SHEET: 2/2	
				APPROVAL: MAX	
				SIZE:	DESCRIPTION: SMD EMI Suppression Ferrite Bead
A	15-OCT-18	PDF	ZXG	PACKING UNIT: 4000 pcs	PART NO: FBSHS0805-601-201HR
REV	DATE	FILE	BY		