

DO NOT SCALE FROM THIS PRINT

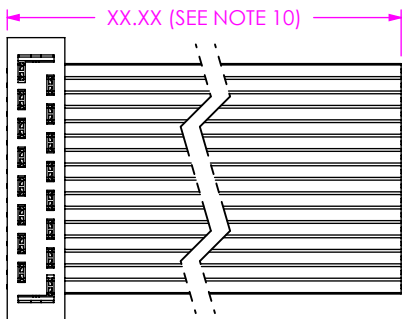


FIG 2
HCSD-08-S-XX.XX-01 SHOWN
(DIFFERENT AS SHOWN, OTHERWISE SAME AS FIG1)

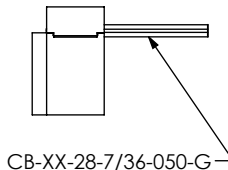


FIG 3
-G: GRAY CABLE
(DIFFERENT AS SHOWN, OTHERWISE SAME AS FIG1)

HCSD-XX-X-XX.XX-01-XXX-XXX

No OF POSITIONS
-02 THRU -36
(STANDARD COLOR CODED CABLE)
(-32 & -36 ONLY AVAILABLE WITH -G OPTION)
(POSITIONS 21-36: EXISTING CUSTOMERS ONLY)

OPTION #2
(SEE FIG 3 THRU FIG 19 FOR AVAILABLE OPTIONS)
OPTION #1
(SEE FIG 3 THRU FIG 19 FOR AVAILABLE OPTIONS)
LEAD STYLE

ASSEMBLY LENGTH
(2 INCH MINIMUM)

END ASSEMBLY
-S: SINGLE END
-D: DOUBLE END

-T: BRIGHT ACID TIN ON ENTIRE PIN
(USE HCSD-XX-01-TX)
LEAVE BLANK FOR 10μ" SELECTIVE GOLD IN CONTACT AREA, BRIGHT ACID TIN ON TAIL.

FIG 4
-T: TIN PLATING

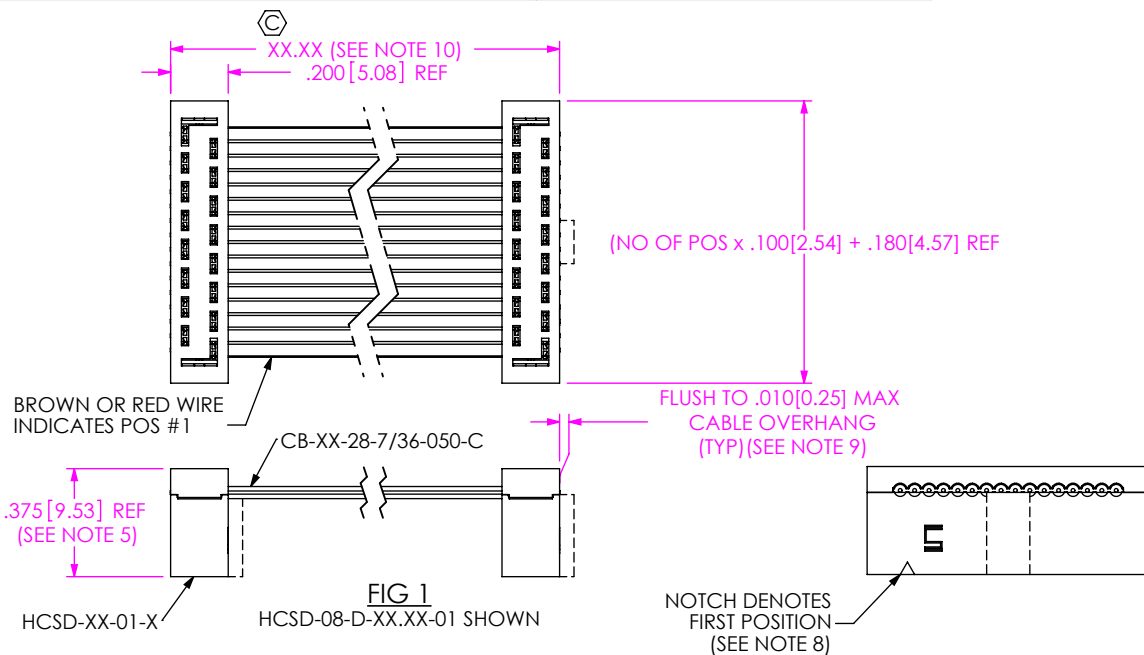


FIG 1
HCSD-08-D-XX.XX-01 SHOWN

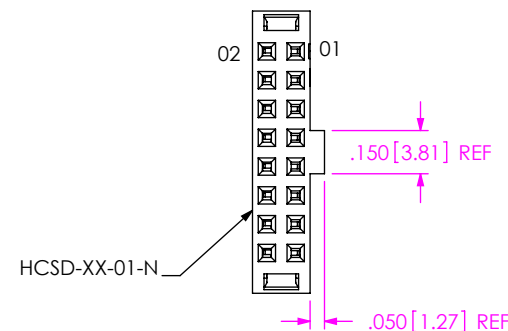


FIG 5
-N: NOTCH
(NOT AVAILABLE ON -02 POSITION)
(DIFFERENT AS SHOWN, OTHERWISE SAME AS FIG1)

F:\DWG\MISC\MKTG\HCSD-XX-X-XX.XX-01-XXX-XXX-MKT.SLDDRW

NOTES:

1. Ⓢ REPRESENTS A CRITICAL DIMENSION.
2. HIDDEN LINES ARE USED TO SHOW POLARIZATION WHEN USING -N OPTION.
3. ALL ASSEMBLIES TO BE 100% ELECTRICALLY TESTED FOR SHORTS AND OPENS
4. ALL ASSEMBLIES TO BE 100% HI-POT TESTED AT 1000V.
5. HCSD-XX-01-X TO BE PRESSED TOGETHER WITH NO GAPS BETWEEN CABLE & BODIES.
6. CONDUCTORS SHALL BE CONSISTENT IN APPEARANCE, SOLDER MUST MAINTAIN CABLE STRANDS WITHIN THE MAX DIA. TOLERANCE.
7. NOTE DELETED.
8. FOR R OR RW OPTION, CABLE RIB ORIENTATION CAN BE EITHER TOWARDS OR AWAY FROM THE CAP.
9. WHEN CUTTING CABLE TO LENGTH, CONDUCTORS SHOULD NOT EXTEND PAST THE CABLE INSULATION, EXTENDING LESS THAN 25% OF CABLE THICKNESS ON CONSECUTIVE AND LESS THAN 50% OF THE CABLE THICKNESS ON NON-CONSECUTIVE STRANDS IS CONSIDERED A PROCESS INDICATOR.
10. FOR LENGTHS LESS THAN 12.5", TOLERANCE SHALL BE ±.125[3.18], ALL OTHER LENGTHS SHALL BE ±1%.
11. PACKAGE -STX USING SKIN PACKAGING PER THE PACKAGING MANUAL. FOLLOW THE IDC FLOW CHART IN THE MANUAL FOR ALL OTHER OPTIONS.
12. ORDERS WILL BE PACKAGED ACCORDING TO THE SAMTEC PACKAGING EFFICIENCY STANDARDS (SPES) FOUND ON WWW.SAMTEC.COM.

UNLESS OTHERWISE SPECIFIED, DIMENSIONS ARE IN INCHES.
TOLERANCES ARE:
DECIMALS ANGLES
.XX: ±.01 [.3] 1°
.XXX: ±.005 [.13]
.XXXX: ±.0020 [.051]

PROPRIETARY NOTE

THIS DOCUMENT CONTAINS CONFIDENTIAL AND PROPRIETARY INFORMATION AND ALL DESIGN, MANUFACTURING, REPRODUCTION, USE, PATENT RIGHTS AND SALES RIGHTS ARE EXPRESSLY RESERVED BY SAMTEC, INC. THIS DOCUMENT SHALL NOT BE DISCLOSED, IN WHOLE OR PART, TO ANY UNAUTHORIZED PERSON OR ENTITY NOR REPRODUCED, TRANSFERRED OR INCORPORATED IN ANY OTHER PROJECT IN ANY MANNER WITHOUT THE EXPRESS WRITTEN CONSENT OF SAMTEC, INC.

MATERIAL: DO NOT SCALE DRAWING SHEET SCALE: 3:2
INSULATOR: LCP, UL 94 VO, COLOR: BLACK
CONTACT: PHOS BRONZE
CABLE: COLOR-CODED OR GRAY PVC/TIN PLATED COPPER



520 PARK EAST BLVD. NEW ALBANY, IN 47150
PHONE: 812-944-6733 FAX: 812-948-5047
e-Mail: info@SAMTEC.com code 55322

DESCRIPTION: .100 CL MOLD TO POS DOUBLE ROW FEMALE ASSEMBLY

DWG. NO. HCSD-XX-X-XX.XX-01-XXX-XXX

BY: KOLB 08/03/1990 SHEET 1 OF 4

REVISION AE

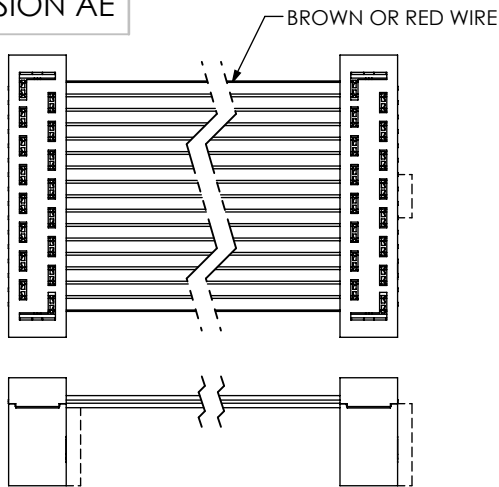


FIG 6
-RW: REVERSE WIRING
(DIFFERENT AS SHOWN, OTHERWISE SAME AS FIG1)

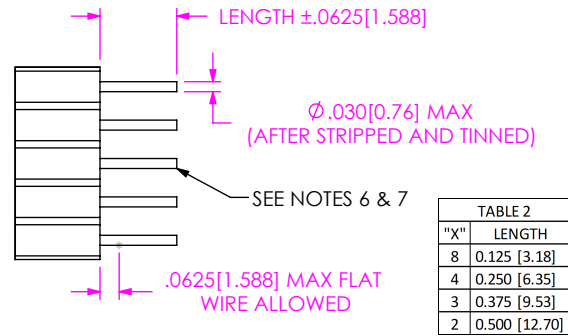


FIG 7
-ST"X": STRIPPED AND TINNED
(DIFFERENT AS SHOWN, OTHERWISE SAME AS FIG1)
(NOT AVAILABLE IN 28 POS AND UP)

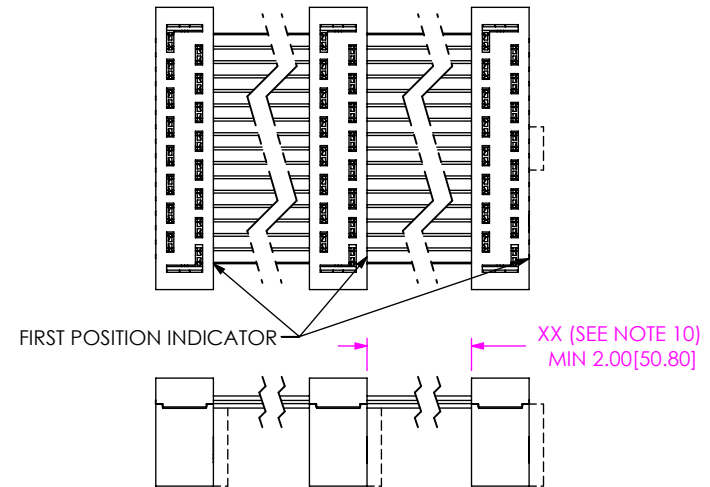


FIG 8
-D"XX": DAISY CHAIN DOUBLE
(DIFFERENT AS SHOWN, OTHERWISE SAME AS FIG1)
(2 INCH MIN WITH 1 INCH INCREMENTS)

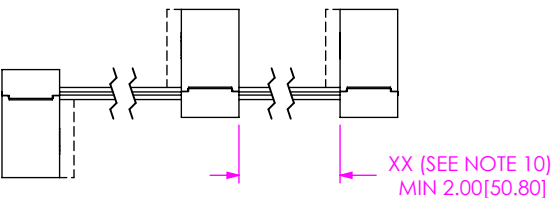
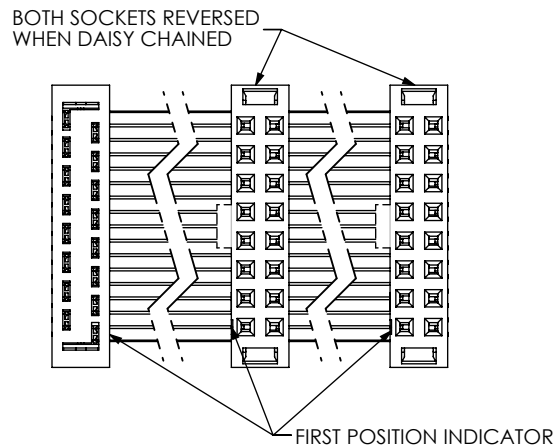


FIG 9
-R: REVERSE CONNECTOR
(DIFFERENT AS SHOWN, OTHERWISE SAME AS FIG1)

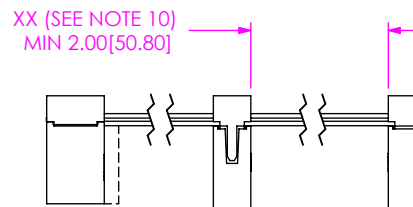
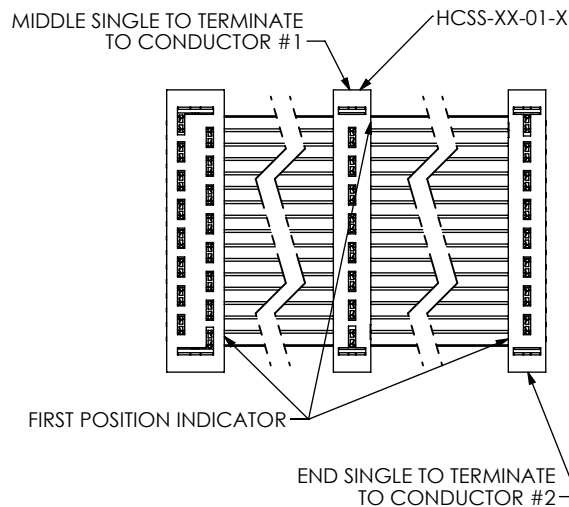


FIG 10
-W"XX": WIRING REVERSED
(DIFFERENT AS SHOWN, OTHERWISE SAME AS FIG1)

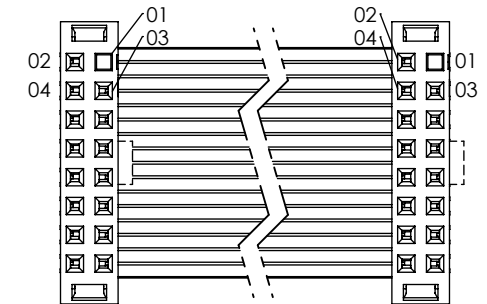


FIG 11
-P"XX": POLARIZED MATING
(DIFFERENT AS SHOWN, OTHERWISE SAME AS FIG1)
XX = POSITION NO
INSERT POLARIZING KEY PART NO PK-06-N
INTO SPECIFIED POSITION -XX (BOTH ENDS)

PROPRIETARY NOTE
THIS DOCUMENT CONTAINS CONFIDENTIAL AND PROPRIETARY INFORMATION AND ALL DESIGN, MANUFACTURING, REPRODUCTION, USE, PATENT RIGHTS AND SALES RIGHTS ARE EXPRESSLY RESERVED BY SAMTEC, INC. THIS DOCUMENT SHALL NOT BE DISCLOSED, IN WHOLE OR PART, TO ANY UNAUTHORIZED PERSON OR ENTITY NOR REPRODUCED, TRANSFERRED OR INCORPORATED IN ANY OTHER PROJECT IN ANY MANNER WITHOUT THE EXPRESS WRITTEN CONSENT OF SAMTEC, INC.



520 PARK EAST BLVD, NEW ALBANY, IN 47150
PHONE: 812-944-6733 FAX: 812-948-5047
e-Mail info@SAMTEC.com code 55322

DO NOT SCALE DRAWING

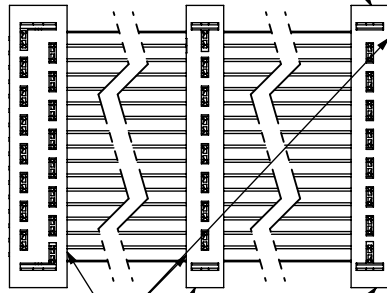
SHEET SCALE: 3:2

DESCRIPTION: .100 CL MOLD TO POS DOUBLE ROW FEMALE ASSEMBLY

DWG. NO. **HCS-D-XX-X-XX.XX-01-XXX-XXX**

BY: KOLB 08/03/1990 SHEET 2 OF 4

END SINGLE TO TERMINATE
TO CONDUCTOR #2



FIRST POSITION INDICATOR
MIDDLE SINGLE TO TERMINATE
TO CONDUCTOR #1

HCSS-XX-01-X

XX (SEE NOTE 10)
MIN 2.00[50.80]

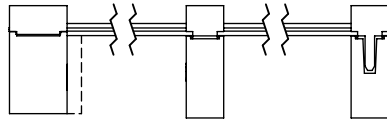
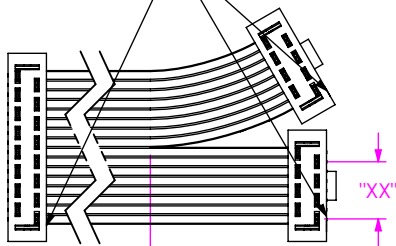


FIG 12

-S"XX": DAISY CHAIN SINGLE
(SAME AS FIG 1, DIFFERENT AS SHOWN)
2 INCH MIN WITH 1 INCH INCREMENTS
SCALE: 3:2

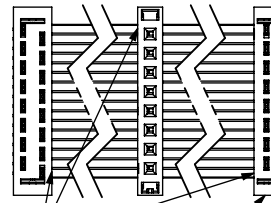
FIRST POSITION INDICATOR



5.000[127.00] MAX
2.000[50.80] MIN

FIG 15

-BXX: BREAKOUT OPTION
(SAME AS FIG 1, DIFFERENT AS SHOWN)
"XX" = NO OF CONDUCTORS BROKEN
OUT FROM THE FIRST POSITION
(HCSD-08-XX.XX-01-N-B04 SHOWN)



FIRST POSITION INDICATOR

HCSS-XX-01-X

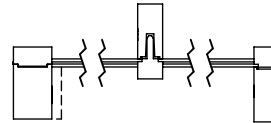
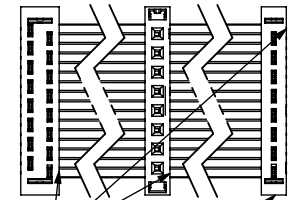


FIG 13

-W"XX"-M: MIDDLE REVERSED
(SAME AS FIG 1, DIFFERENT AS SHOWN)



FIRST POSITION INDICATOR

HCSS-XX-01-X

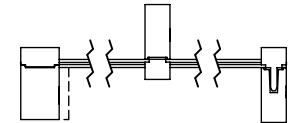
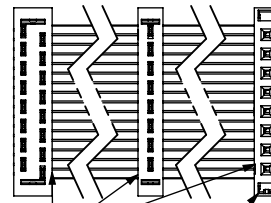


FIG 14

-S"XX"-M: MIDDLE REVERSED
(SAME AS FIG 1, DIFFERENT AS SHOWN)



FIRST POSITION INDICATOR

HCSS-XX-01-X

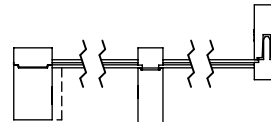
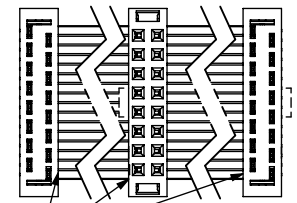


FIG 16

-S"XX"-O: OUTSIDE REVERSED
(SAME AS FIG 1, DIFFERENT AS SHOWN)



FIRST POSITION INDICATOR

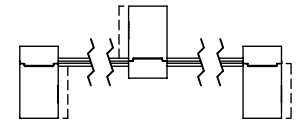


FIG 17

-D"XX"-M: MIDDLE REVERSED
(SAME AS FIG 1, DIFFERENT AS SHOWN)

PROPRIETARY NOTE

THIS DOCUMENT CONTAINS CONFIDENTIAL AND PROPRIETARY INFORMATION AND ALL DESIGN, MANUFACTURING, REPRODUCTION, USE, PATENT RIGHTS AND SALES RIGHTS ARE EXPRESSLY RESERVED BY SAMTEC, INC. THIS DOCUMENT SHALL NOT BE DISCLOSED, IN WHOLE OR PART, TO ANY UNAUTHORIZED PERSON OR ENTITY NOR REPRODUCED, TRANSFERRED OR INCORPORATED IN ANY OTHER PROJECT IN ANY MANNER WITHOUT THE EXPRESS WRITTEN CONSENT OF SAMTEC, INC.



520 PARK EAST BLVD, NEW ALBANY, IN 47150
PHONE: 812-944-6733 FAX: 812-948-5047
e-Mail info@SAMTEC.com code 55322

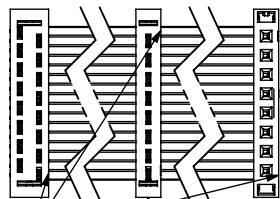
DO NOT SCALE DRAWING

SHEET SCALE: 1:1

DESCRIPTION: .100 CL MOLD TO POS DOUBLE
ROW FEMALE ASSEMBLY

DWG. NO.
HCSD-XX-X-XX.XX-01-XXX-XXX

BY: KOLB 08/03/1990 SHEET 3 OF 4



FIRST POSITION INDICATOR

HCSS-XX-01-X

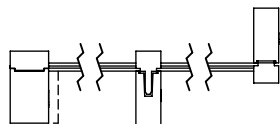
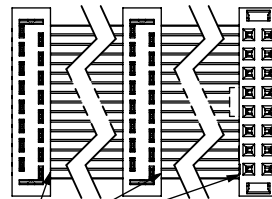


FIG 18
-W"XX"-O: OUTSIDE REVERSED
(SAME AS FIG 1, DIFFERENT AS SHOWN)



FIRST POSITION INDICATOR

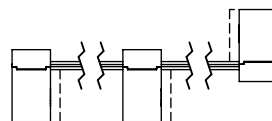


FIG 19
-D"XX"-O: OUTSIDE REVERSED
(SAME AS FIG 1, DIFFERENT AS SHOWN)

PROPRIETARY NOTE

THIS DOCUMENT CONTAINS CONFIDENTIAL AND PROPRIETARY INFORMATION AND ALL DESIGN, MANUFACTURING, REPRODUCTION, USE, PATENT RIGHTS AND SALES RIGHTS ARE EXPRESSLY RESERVED BY SAMTEC, INC. THIS DOCUMENT SHALL NOT BE DISCLOSED, IN WHOLE OR PART, TO ANY UNAUTHORIZED PERSON OR ENTITY NOR REPRODUCED, TRANSFERRED OR INCORPORATED IN ANY OTHER PROJECT IN ANY MANNER WITHOUT THE EXPRESS WRITTEN CONSENT OF SAMTEC, INC.



520 PARK EAST BLVD, NEW ALBANY, IN 47150
PHONE: 812-944-6733 FAX: 812-948-5047
e-Mail info@SAMTEC.com code 55322

DO NOT SCALE DRAWING

SHEET SCALE: 1:1

DESCRIPTION: .100 CL MOLD TO POS DOUBLE ROW FEMALE ASSEMBLY

DWG. NO.
HCSD-XX-X-XX.XX-01-XXX-XXX

BY: KOLB 08/03/1990 SHEET 4 OF 4