

Product Specifications



Core type:

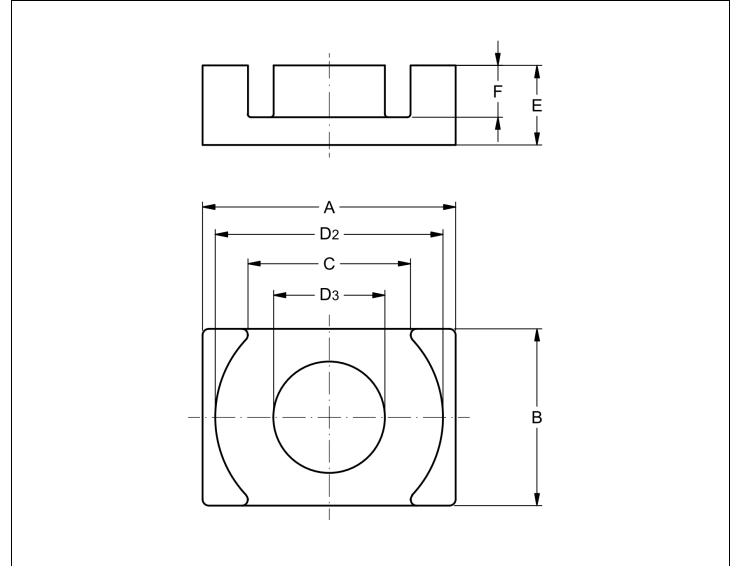
EQ30

Selling unit:

PCS

Product dimensions (mm): EQ30

	Nom	Tol +	Tol -	Max	Min
A	30.00	0.40	0.40	30.40	29.60
B	20.00	0.30	0.30	20.30	19.70
C	19.45	0.40	0.40	19.85	19.05
D2	26.00	0.40	0.40	26.40	25.60
D3	11.00	0.20	0.20	11.20	10.80
E	8.00	0.15	0.15	8.15	7.85
F	5.30	0.20	0.20	5.50	5.10



Effective parameters

Effective area	Minimum area	Effective length	Effective volume	Core factor
$A_e = 108 \text{ [mm}^2\text{]}$	$A_{min} = 95 \text{ [mm}^2\text{]}$	$L_e = 46 \text{ [mm]}$	$V_e = 4970 \text{ [mm}^3\text{]}$	$C_1 = 0.426 \text{ [mm}^{-1}\text{]}$

Inductance factor

Material	Value	Tol +	Tol -	Measuring conditions			Unit
3C95	6630	25%	25%	10 kHz	< 0.1 mT	25°C	nH/turns ²
3C96	4900	25%	25%	10 kHz	< 0.1 mT	25°C	nH/turns ²
3F36	3300	25%	25%	10 kHz	< 0.1 mT	25°C	nH/turns ²
3F4	2400	25%	25%	10 kHz	< 0.1 mT	25°C	nH/turns ²
3F46	1800	25%	25%	10 kHz	< 0.1 mT	25°C	nH/turns ²

Power loss

Material	Symbol	Value	Measuring conditions			Unit
3C95	Pv	< 2.4	100 kHz	200 mT	100°C	W/set
3C95	Pv	< 2.6	100 kHz	200 mT	25°C	W/set
3C96	Pv	< 2.2	100 kHz	200 mT	100°C	W/set
3C96	Pv	< 0.89	400 kHz	50 mT	100°C	W/set
3F36	Pv	< 0.75	500 kHz	50 mT	100°C	W/set
3F36	Pv	< 5.7	500 kHz	100 mT	100°C	W/set
3F4	Pv	< 1.5	1000 kHz	30 mT	100°C	W/set
3F4	Pv	< 2.5	3000 kHz	10 mT	100°C	W/set
3F46	Pv	< 2.6	1000 kHz	50 mT	100°C	W/set
3F46	Pv	< 1.6	3000 kHz	10 mT	100°C	W/set

Product Specifications



Core type:

EQ30

Selling unit:

PCS

Bsat						
Material	Symbol	Value	Measuring conditions			Unit
3C95	Bsat	> 330	10 kHz	250 A/m	100°C	mT
3C96	Bsat	> 340	10 kHz	250 A/m	100°C	mT
3F36	Bsat	> 320	10 kHz	250 A/m	100°C	mT
3F4	Bsat	> 330	10 kHz	250 A/m	100°C	mT
3F46	Bsat	> 330	10 kHz	250 A/m	100°C	mT