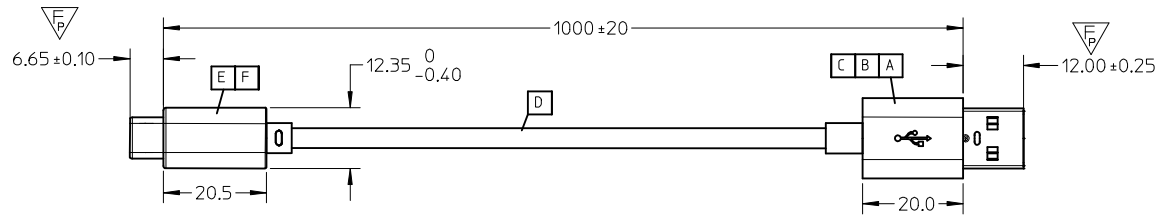
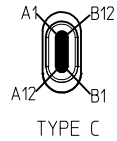
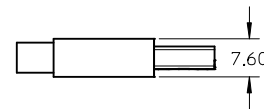
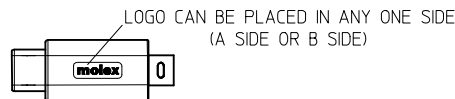
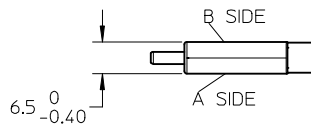


REVISIONS				
EC NO	DATE	REV	DESCRIPTION	CHANGER
CY16-5179	2016/03/19	C	UPDATE FLEXING TEST REQUIREMENT	LUCY
CY16-5923	2016/07/08	D	ADD MOLEX LOGO ON OUTER MOLD	LUCY
CY16-5857	2016/07/21	E	CHANGE PCBA	LUCY

P1



P2



PIN ASSIGNMENTS				
Type C	SIGNAL NAME	WIRE COLOR	USB 2.0	SIGNAL NAME
A1,B1,A12,B12	GND	BLACK	4	GND
A4,B4,A9,B9	VBUS	RED	1	VBUS
A5	CC	-	-	-
B5	VCONN	-	-	-
A6	Dp1	GREEN	3	D+
A7	Dn1	WHITE	2	D-
SHELL	SHIELD	BRAID	SHELL	SHIELD

Rp
56Kohm

F	extended tube back metal shell	1
E	Type C plug Au 30u" 22pin+PCBA 2.0	1
D	1PX28+3CX24AWG,SHLD,PVC,BK;4.2MM,UL2725	AR
C	USB2.0, plug, A type,bottom shell	1
B	USB2.0, plug, A type,top shell(7.9mm)	1
A	USB2.0, plug, A type plating 30u"	1
ITEM	DESCRIPTION	QTY.

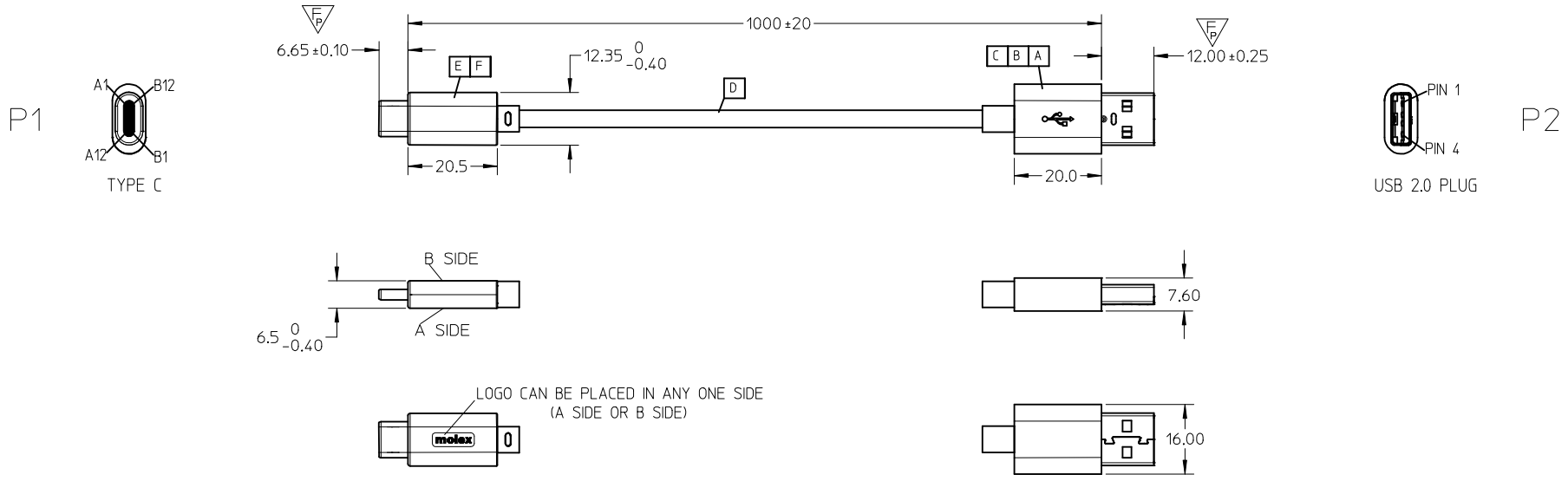
ENTER DESCRIPTION EC NO: CPG2017-0113 DRW: XJGU001 CH: KD:LUCY APPR: FNIE 2016/07/22 2016/07/22 2016/07/25	QUALITY SYMBOLS $\nabla_F=0$ $\nabla_F=0$ $\nabla_F=2$	GENERAL TOLERANCES (UNLESS SPECIFIED)		DIMENSION STYLE MM ONLY		SCALE ---	DESIGN UNITS METRIC	THIRD ANGLE PROJECTION
		4 PLACES ± --- ± --- 3 PLACES ± --- ± --- 2 PLACES ± 0.25 ± --- 1 PLACE ± 0.5 ± --- 0 PLACE ± --- ± ---	mm INCH DRAWN BY: XJGU001 DATE: 2015/12/04 CHECKED BY: LUCY DATE: 2015/12/04 APPROVED BY: FNIE DATE: 2015/12/04	TITLE USB TYPE C TO USB 2.0 A MALE L=1M				
		DRAFT WHERE APPLICABLE MUST REMAIN WITHIN DIMENSIONS		MATERIAL NO. 687980001	DOCUMENT NO. SD-68798-005	SHEET NO. 1 OF 2		
		THIS DRAWING CONTAINS INFORMATION THAT IS PROPRIETARY TO MOLEX INCORPORATED AND SHOULD NOT BE USED WITHOUT WRITTEN PERMISSION						

NOTE:

1. OVERMOLDING SPECIFICATION:
 - 1.1 INNER MOLDING: PE RESIN
 - 1.2 OUTER MOLDING: PVC BLACK RESIN
2. APPLICATION CONDITION
 - 2.1 WORKING TEMPERATURE: -10°--- +50°
 - 2.2 STORAGE TEMPERATURE: -20°--- +60°
3. MECHANICAL PERFORMACNE
 - 3.1. CABLE ASSEMBLY CAN PASS FLEXING TEST, PER EIA364-41 CONDITION I WITH DIMENSION X=3.7 TIMES THE CABLE DIAMETER AND 100 CYCLES IN EACH OF TWO PLANES 120 DEGREE ARC.
 - 3.2. CABLE SHOULD WITHSTAND A PULL FORCE 40N FOR ONE MINUTE WITHOUT VISIBLE TERMINATION DAMAGE.PER EIA 364-38 METHOD A
 - 3.3 CABLE SHOULD MEET 3.8.1.6 4-AXIS CONTINUITY TEST OF TYPE C STANDARD FOR P1 SIDE
4. ELECTRICAL PERFORMACNE
 - 4.1 100% OPEN AND SHORT TEST
 - 4.2 OTHER ELECTRICAL PERFORMANCE MEET USB TYPE-C LEGACY CABLE, C - PLUG A, USB 2.0
 - 4.3 CURRENT RATING:3A, VOLTAGE DROP SHALL BE 250mV FOR GND AND 500mV FOR VBUS.
5. THIS PRODUCT MUST MEET Molex QEHS-699000-301
6. PRODUCT SPECIFICATION PS-68798-0003

ENTER DESCRIPTION EC NO: CPG2017-0113 DRWN:XJGU001 2016/07/22 CHKD:LUCY 2016/07/22 APPR:FNIE 2016/07/25	QUALITY SYMBOLS $\nabla_A=0$ $\nabla_G=0$ $\nabla_P=0$	GENERAL TOLERANCES (UNLESS SPECIFIED)		DIMENSION STYLE MM ONLY		SCALE ---	DESIGN UNITS METRIC	THIRD ANGLE PROJECTION		
			mm	INCH	DRAWN BY XJGU001	DATE 2015/12/04	TITLE USB TYPE C TO USB 2.0 A MALE L=1M			
		4 PLACES	± ---	± ---	CHECKED BY LUCY	DATE 2015/12/04				
		3 PLACES	± ---	± ---	APPROVED BY FNIE	DATE 2015/12/04	<div style="text-align: center; font-weight: bold; font-size: 1.2em;">molex</div> MATERIAL NO. 687980001 DOCUMENT NO. SD-68798-005 SHEET NO. 2 OF 2			
		2 PLACES	± 0.25	± ---	DRAFT WHERE APPLICABLE MUST REMAIN WITHIN DIMENSIONS					
1 PLACE	± 0.5	± ---								
0 PLACE	± ---	± ---	ANGULAR ± ---°		SIZE A3		THIS DRAWING CONTAINS INFORMATION THAT IS PROPRIETARY TO MOLEX INCORPORATED AND SHOULD NOT BE USED WITHOUT WRITTEN PERMISSION			

REVISIONS				
EC NO	DATE	REV	DESCRIPTION	CHANGER
CY16-5179	2016/03/19	C	UPDATE FLEXING TEST REQUIREMENT	LUCY
CY16-5923	2016/07/08	D	ADD MOLEX LOGO ON OUTER MOLD	LUCY
CY16-5857	2016/07/21	E	CHANGE PCBA	LUCY



PIN ASSIGNMENTS				
Type C	SIGNAL NAME	WIRE COLOR	USB 2.0	SIGNAL NAME
A1,B1,A12,B12	GND	BLACK	4	GND
A4,B4,A9,B9	VBUS	RED	1	VBUS
A5	CC	-	-	-
B5	VCONN	-	-	-
A6	Dp1	GREEN	3	D+
A7	Dn1	WHITE	2	D-
SHELL	SHIELD	BRAID	SHELL	SHIELD

Rp
56Kohm

F	extended tube back metal shell	1
E	Type C plug Au 30u" 22pin+PCBA 2.0	1
D	1PX28+3CX24AWG,SHLD,PVC,BK;4.2MM,UL2725	AR
C	USB2.0, plug, A type,bottom shell	1
B	USB2.0, plug, A type,top shell(7.9mm)	1
A	USB2.0, plug, A type plating 30u"	1
ITEM	DESCRIPTION	QTY.

ENTER DESCRIPTION EC NO: CPG2017-0113 DRW: XJGU001 CH: KD: LUCY APPR: FNIE 2016/07/22 2016/07/22 2016/07/25	QUALITY SYMBOLS $\nabla_F=0$ $\nabla_F=0$ $\nabla_F=2$	GENERAL TOLERANCES (UNLESS SPECIFIED) mm INCH 4 PLACES ± --- ± --- 3 PLACES ± --- ± --- 2 PLACES ± 0.25 ± --- 1 PLACE ± 0.5 ± --- 0 PLACE ± --- ± --- ANGULAR ± --- °	DIMENSION STYLE MM ONLY DRAWN BY: XJGU001 DATE: 2015/12/04 CHECKED BY: LUCY DATE: 2015/12/04 APPROVED BY: FNIE DATE: 2015/12/04 MATERIAL NO.	SCALE: --- DESIGN UNITS: METRIC THIRD ANGLE PROJECTION	TITLE: USB TYPE C TO USB 2.0 A MALE L=1M molex DOCUMENT NO. SD-68798-005 SHEET NO. 1 OF 2	
	DRAFT WHERE APPLICABLE MUST REMAIN WITHIN DIMENSIONS		SIZE: A3 THIS DRAWING CONTAINS INFORMATION THAT IS PROPRIETARY TO MOLEX INCORPORATED AND SHOULD NOT BE USED WITHOUT WRITTEN PERMISSION			
			687980001		68798-005	

NOTE:

- 1. OVERMOLDING SPECIFICATION:
 - 1.1 INNER MOLDING: PE RESIN
 - 1.2 OUTER MOLDING: PVC BLACK RESIN
- 2. APPLICATION CONDITION
 - 2.1 WORKING TEMPERATURE: -10°--- +50°
 - 2.2 STORAGE TEMPERATURE: -20°--- +60°
- 3. MECHANICAL PERFORMACNE
 - 3.1. CABLE ASSEMBLY CAN PASS FLEXING TEST, PER EIA364-41 CONDITION I WITH DIMENSION X=3.7 TIMES THE CABLE DIAMETER AND 100 CYCLES IN EACH OF TWO PLANES 120 DEGREE ARC.
 - 3.2. CABLE SHOULD WITHSTAND A PULL FORCE 40N FOR ONE MINUTE WITHOUT VISIBLE TERMINATION DAMAGE.PER EIA 364-38 METHOD A
 - 3.3 CABLE SHOULD MEET 3.8.1.6 4-AXIS CONTINUITY TEST OF TYPE C STANDARD FOR P1 SIDE
- 4. ELECTRICAL PERFORMACNE
 - 4.1 100% OPEN AND SHORT TEST
 - 4.2 OTHER ELECTRICAL PERFORMANCE MEET USB TYPE-C LEGACY CABLE, C - PLUG A, USB 2.0
 - 4.3 CURRENT RATING:3A, VOLTAGE DROP SHALL BE 250mV FOR GND AND 500mV FOR VBUS.
- 5. THIS PRODUCT MUST MEET Molex QEHS-699000-301
- 6. PRODUCT SPECIFICATION PS-68798-0003

ENTER DESCRIPTION EC NO: CPG2017-0113 DRWN:XJGU001 2016/07/22 CHKD:LUCY 2016/07/22 APPR:FNIE 2016/07/25	QUALITY SYMBOLS $\nabla_A=0$ $\nabla_G=0$ $\nabla_P=0$	GENERAL TOLERANCES (UNLESS SPECIFIED)		DIMENSION STYLE MM ONLY		SCALE ---	DESIGN UNITS METRIC	THIRD ANGLE PROJECTION		
			mm	INCH	DRAWN BY	DATE	TITLE USB TYPE C TO USB 2.0 A MALE L=1M			
		4 PLACES	± ---	± ---	XJGU001	2015/12/04				
		3 PLACES	± ---	± ---	CHECKED BY	DATE	DOCUMENT NO. SD-68798-005 SHEET NO. 2 OF 2			
		2 PLACES	± 0.25	± ---	LUCY	2015/12/04				
1 PLACE	± 0.5	± ---	APPROVED BY	DATE	<div style="text-align: center; font-weight: bold; font-size: 1.2em;">molex</div>					
0 PLACE	± ---	± ---	FNIE	2015/12/04						
ANGULAR ± ---°		DRAFT WHERE APPLICABLE MUST REMAIN WITHIN DIMENSIONS		MATERIAL NO. 687980001						
				SIZE A3	THIS DRAWING CONTAINS INFORMATION THAT IS PROPRIETARY TO MOLEX INCORPORATED AND SHOULD NOT BE USED WITHOUT WRITTEN PERMISSION					