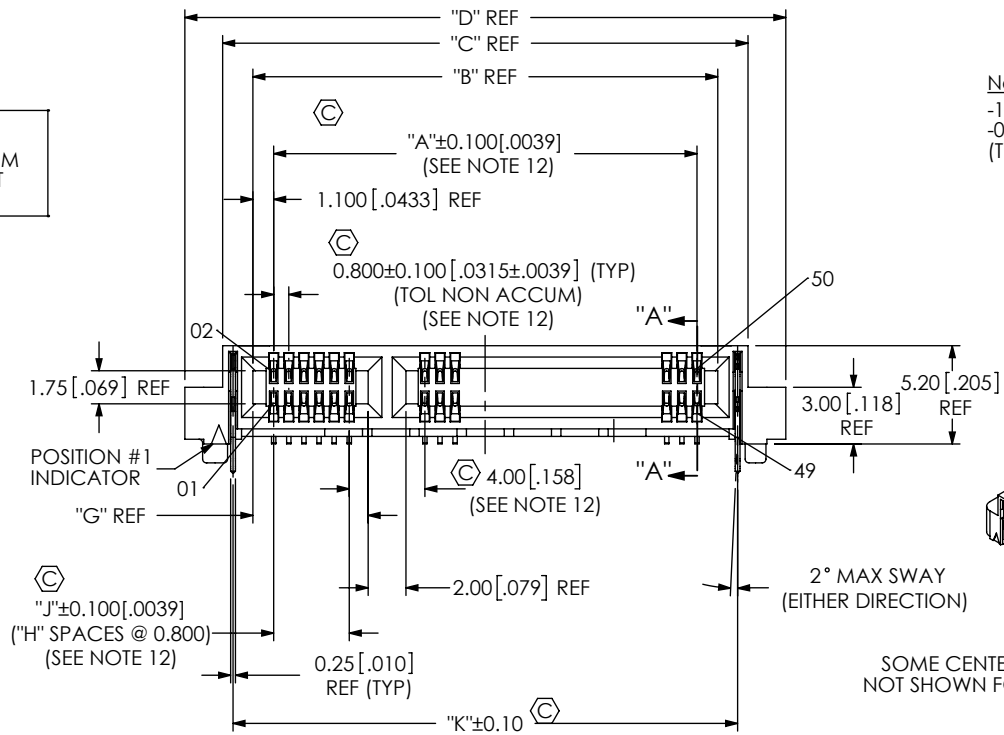


DO NOT SCALE FROM THIS PRINT



HSEC8-1XX-XX-X-RA-XX-XX

No OF POSITIONS
 -10, -20, -30 (ONE BANK OPTIONS)
 -09, -13, -25, -40, -49, -50, -60 (TWO BANK OPTIONS)

CARD THICKNESS
 -01: 1.57mm [.062] THICK CARD

PLATING SPECIFICATION
 -L: 10µ" SELECTIVE GOLD ON CONTACT AREA, TIN TAIL
 -S: 30µ" SELECTIVE GOLD ON CONTACT AREA, TIN TAIL

PACKAGING (SEE NOTES 17 & 18)
 BLANK: (TRAY SEE NOTE 16)
 -TR: TAPE & REEL
 -FR: FULL REEL QTY TAPE & REEL

OPTION
 -BL: BOARD LOCK OPTION (USE HSEC8-XXX-01-RA-BL) (AVAILABLE IN -09, -13, -25, -40, -49, -50, -60 POS ONLY, SEE FIG 2, SHT 3)
 -L2: ECDP LATCHING OPTION (USE HSEC8-XXX-01-RA-L2) (AVAILABLE IN -09, -13, -25, -49 POS ONLY, SEE FIG 3, SHT 3)
ROW SPECIFICATION
 -RA: RIGHT ANGLE (USE HSEC8-XXX-01-RA-XX)

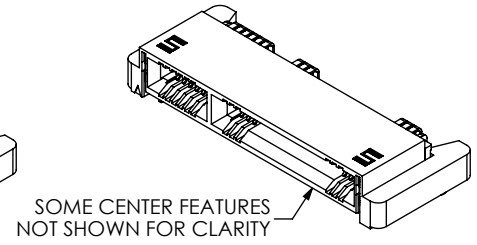
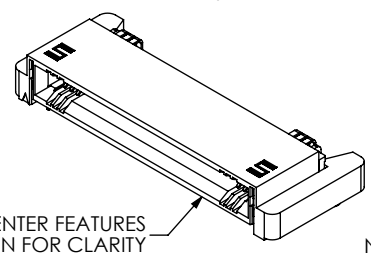
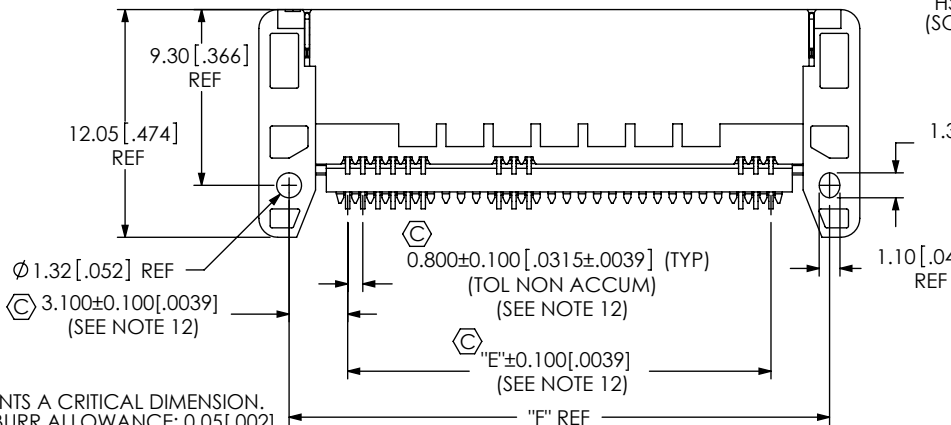


FIG 1
 HSEC8-125-01-X-RA SHOWN (SOME CENTER FEATURES NOT SHOWN FOR CLARITY)



1.32[.052] REF

TABLE 2

| No OF POSITIONS | "A" | "B" | "C" | "D" | "E" | "F" | "G" | "H" | "J" | "K" |
|-----------------|--------|--------|--------|-------|--------|-------|--------|-----|--------|-------|
| -10 | 7.200 | 9.400 | 12.600 | 16.60 | 7.200 | 13.40 | NA | NA | NA | 11.51 |
| -20 | 15.200 | 17.400 | 20.600 | 24.60 | 15.200 | 21.40 | NA | NA | NA | 19.51 |
| -30 | 23.200 | 25.400 | 28.600 | 32.60 | 23.200 | 29.40 | NA | NA | NA | 27.51 |
| -09 | 9.600 | 11.800 | 15.000 | 19.00 | 9.600 | 15.80 | 4.500 | 3 | 2.400 | 13.91 |
| -13 | 12.800 | 15.000 | 18.200 | 22.20 | 12.800 | 19.00 | 6.100 | 5 | 4.000 | 17.11 |
| -25 | 22.400 | 24.600 | 27.800 | 31.80 | 22.400 | 28.60 | 6.100 | 5 | 4.000 | 26.71 |
| -40 | 34.400 | 36.600 | 39.800 | 43.80 | 34.400 | 40.60 | 18.900 | 21 | 16.800 | 38.71 |
| -49 | 41.600 | 43.800 | 47.000 | 51.00 | 41.600 | 47.80 | 22.900 | 26 | 20.800 | 45.91 |
| -50 | 42.400 | 44.600 | 47.800 | 51.80 | 42.400 | 48.60 | 22.900 | 26 | 20.800 | 46.71 |
| -60 | 50.400 | 52.600 | 55.800 | 59.80 | 50.400 | 56.60 | 26.900 | 31 | 24.800 | 54.71 |

- NOTES:
1. Ⓢ REPRESENTS A CRITICAL DIMENSION.
 2. MAXIMUM BURR ALLOWANCE: 0.05[.002].
 3. MINIMUM RETENTION FORCE: 2.22N[.500 LB] FOR PINS AND WELD TAB.
 4. MEASURE AT BEND TANGENCY.
 5. NOTE DELETED.
 6. NOTE DELETED.
 7. NOTE DELETED.
 8. DIMENSIONS MUST BE MEASURED ON 4 CONSECUTIVE PINS ON EACH END OF THE CONNECTOR.
 9. NOTE DELETED.
 10. NOTE DELETED.
 11. LTC-XX TO BE IN CLOSED POSITION AS SHOWN.
 12. MEASURE BOTH TOP AND BOTTOM ROWS.
 13. NOTE DELETED.
 14. SEE CO-AU-WI-3163-M DOCUMENT FOR CRITICAL MEASUREMENT SPECIAL INSTRUCTIONS (NOT NEEDED FOR OMM).
 15. SEE SUB-C-272-XX-X FOR PROCESS DESCRIPTION AND REQUIREMENTS.
 16. TRAY ARE STANDARD PACKAGING.
 17. ORDERS WILL BE PACKAGED ACCORDING TO THE SAMTEC PACKAGING EFFICIENCY STANDARDS (SPES) FOUND ON WWW.SAMTEC.COM
 18. ATTACH LABEL TO EACH REEL

UNLESS OTHERWISE SPECIFIED, DIMENSIONS ARE IN MILLIMETERS. TOLERANCES ARE:
 DECIMALS ANGLES
 X.X: ±0.3 [.01]
 X.XX: ±0.13 [.005]
 X.XXX: ±0.051 [.0020]

PROPRIETARY NOTE
 THIS DOCUMENT CONTAINS CONFIDENTIAL AND PROPRIETARY INFORMATION AND ALL DESIGN, MANUFACTURING, REPRODUCTION, USE, PATENT RIGHTS AND SALES RIGHTS ARE EXPRESSLY RESERVED BY SAMTEC, INC. THIS DOCUMENT SHALL NOT BE DISCLOSED, IN WHOLE OR PART, TO ANY UNAUTHORIZED PERSON OR ENTITY NOR REPRODUCED, TRANSFERRED OR INCORPORATED IN ANY OTHER PROJECT IN ANY MANNER WITHOUT THE EXPRESS WRITTEN CONSENT OF SAMTEC, INC.

samtec
 520 PARK EAST BLVD, NEW ALBANY, IN 47150
 PHONE: 812-944-6733 FAX: 812-948-5047
 e-Mail: info@SAMTEC.com code 53322

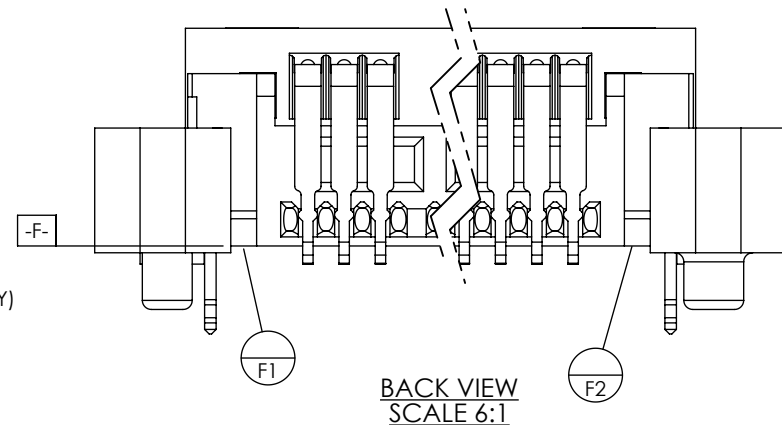
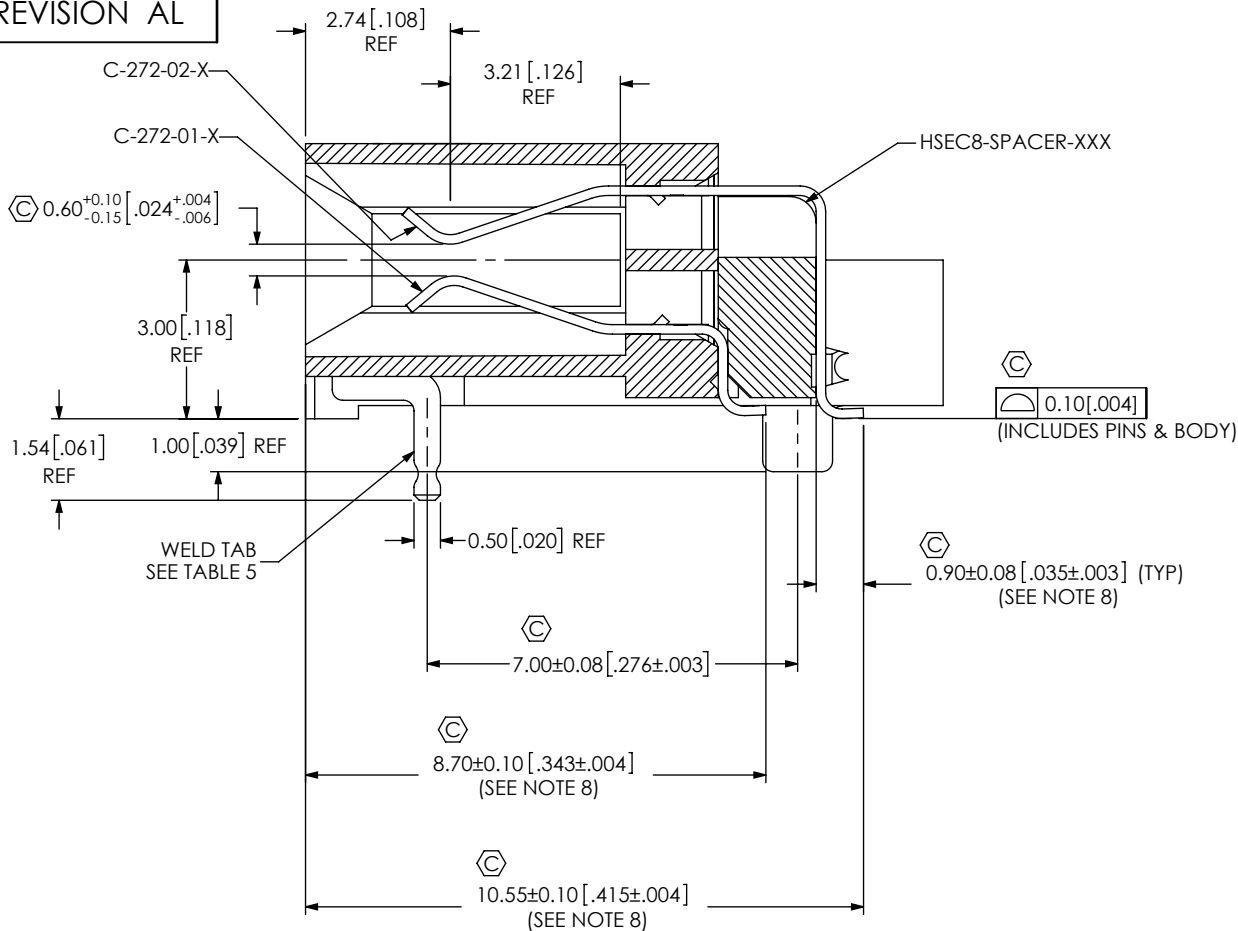
DESCRIPTION:
 0.8MM HIGH SPEED ASSEMBLY

DWG. NO.
HSEC8-1XX-XX-X-RA-XX-XX

BY: ROY LUO 11/05/2008 SHEET 1 OF 4

MATERIAL: DO NOT SCALE DRAWING SHEET SCALE: 2.5:1
 INSULATOR: LCP UL94V-0, COLOR: BLACK
 CONTACT: BeCu
 WELD TAB: BRASS

F:\DWG\MISC\MKTG\HSEC8-1XX-XX-X-RA-XX-XX-MKT.SLDDRW



SECTION "A"- "A"

| OPTION | WT-51-XX-T |
|-----------|------------|
| NO OPTION | WT-51-01-T |
| -BL | WT-51-01-T |
| -L2 | WT-51-02-T |

* PROPRIETARY NOTE *
 THIS DOCUMENT CONTAINS CONFIDENTIAL AND PROPRIETARY INFORMATION AND ALL DESIGN, MANUFACTURING, REPRODUCTION, USE, PATENT RIGHTS AND SALES RIGHTS ARE EXPRESSLY RESERVED BY SAMTEC, INC. THIS DOCUMENT SHALL NOT BE DISCLOSED, IN WHOLE OR PART, TO ANY UNAUTHORIZED PERSON OR ENTITY NOR REPRODUCED, TRANSFERRED OR INCORPORATED IN ANY OTHER PROJECT IN ANY MANNER WITHOUT THE EXPRESS WRITTEN CONSENT OF SAMTEC, INC.

DO NOT SCALE DRAWING

SHEET SCALE: 7:1

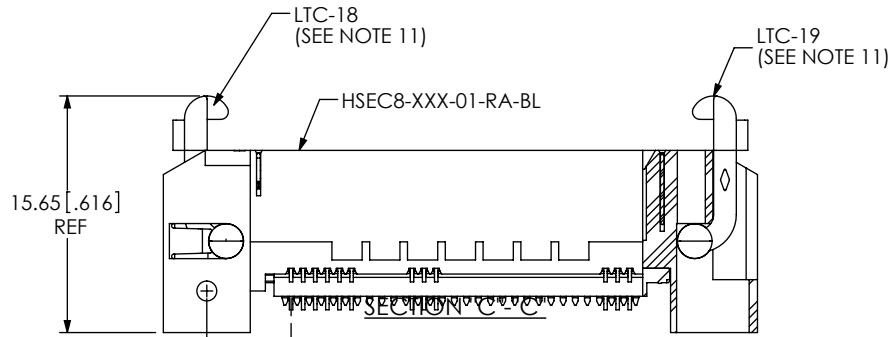


520 PARK EAST BLVD, NEW ALBANY, IN 47150
 PHONE: 812-944-6733 FAX: 812-948-5047
 e-Mail info@SAMTEC.com code 55322

DESCRIPTION:
 0.8MM HIGH SPEED ASSEMBLY

DWG. NO.
 HSEC8-1XX-XX-X-RA-XX-XX

BY: ROY LUO 11/05/2008 SHEET 2 OF 4



⊕ 5.575±0.100 [.2195±.0039]

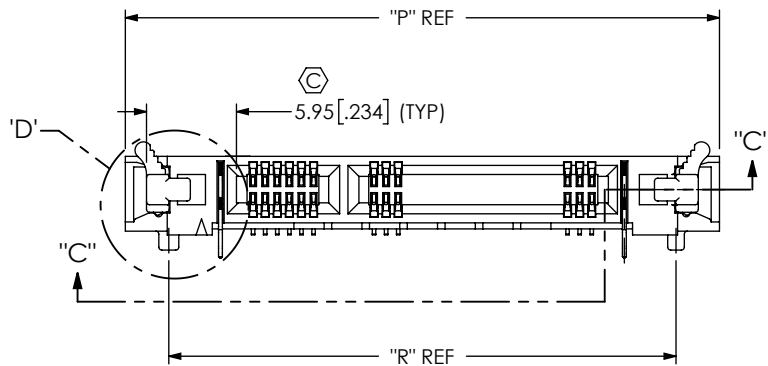
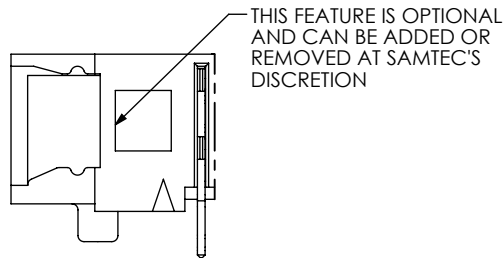


FIG 2
 -BL: BOARD LOCK OPTION ONLY AVAILABLE FOR -09, -13, -25, -40, -49, -50, -60 POSITIONS (SAME AS FIG 1, UNLESS OTHERWISE STATED) HSEC8-125-01-X-RA-BL SHOWN (SOME CENTER FEATURES NOT SHOWN FOR CLARITY)



DETAIL 'D'
 SCALE 4:1

LTC-XX REMOVED FOR CLARITY

| No OF POSITIONS | "P" | "R" |
|-----------------|-------|-------|
| -09 | 26.50 | 20.75 |
| -13 | 29.70 | 23.95 |
| *-20 | 32.10 | 26.35 |
| -25 | 39.30 | 33.55 |
| -40 | 51.30 | 45.55 |
| -49 | 58.50 | 52.75 |
| -50 | 59.30 | 53.55 |
| -60 | 67.30 | 61.55 |

* = NOT TOOLED

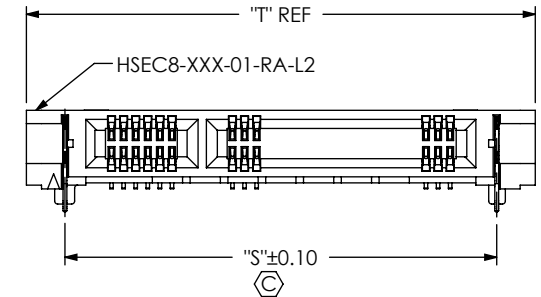
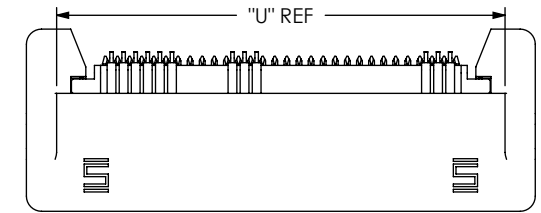


FIG 3
 -L2: ECDP LATCHING OPTION AVAILABLE ONLY IN -09, -13, -25 & -49 POSITIONS SAME AS FIG 1, UNLESS OTHERWISE STATED HSEC8-125-01-X-RA-L2 SHOWN

| No OF POSITIONS | "S" | "T" | "U" |
|-----------------|-------|-------|-------|
| -09 | 15.76 | 20.86 | 16.86 |
| -13 | 18.96 | 24.06 | 20.06 |
| -25 | 28.56 | 33.66 | 29.66 |
| -49 | 47.76 | 52.86 | 48.86 |

PROPRIETARY NOTE
 THIS DOCUMENT CONTAINS CONFIDENTIAL AND PROPRIETARY INFORMATION AND ALL DESIGN, MANUFACTURING, REPRODUCTION, USE, PATENT RIGHTS AND SALES RIGHTS ARE EXPRESSLY RESERVED BY SAMTEC, INC. THIS DOCUMENT SHALL NOT BE DISCLOSED, IN WHOLE OR PART, TO ANY UNAUTHORIZED PERSON OR ENTITY NOR REPRODUCED, TRANSFERRED OR INCORPORATED IN ANY OTHER PROJECT IN ANY MANNER WITHOUT THE EXPRESS WRITTEN CONSENT OF SAMTEC, INC.

DO NOT SCALE DRAWING

SHEET SCALE: 2:1

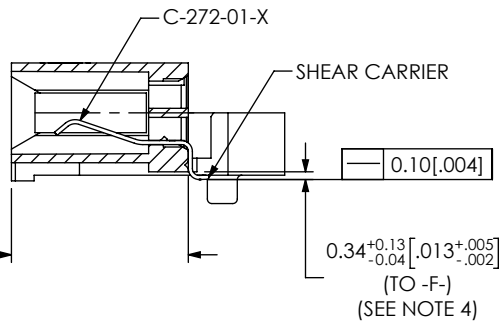
samtec

520 PARK EAST BLVD, NEW ALBANY, IN 47150
 PHONE: 812-944-6733 FAX: 812-948-5047
 e-Mail info@SAMTEC.com code 55322

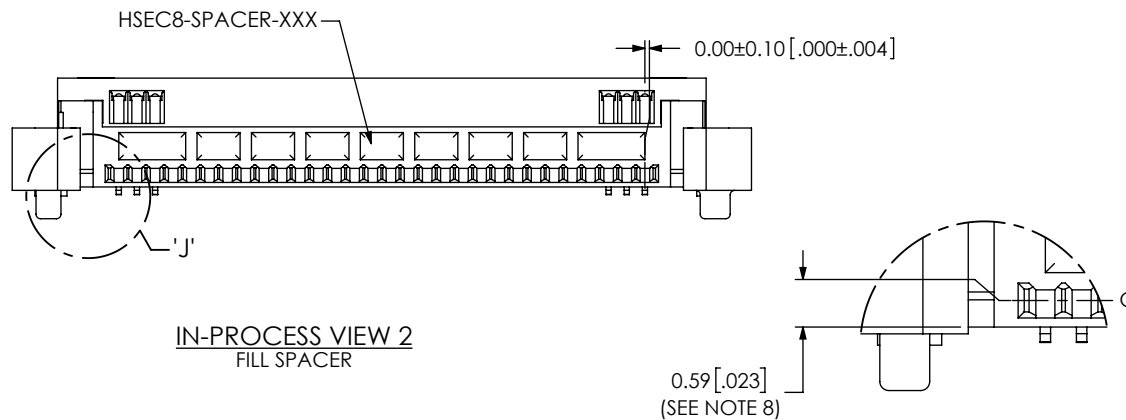
DESCRIPTION:
 0.8MM HIGH SPEED ASSEMBLY

DWG. NO.
HSEC8-1XX-XX-X-RA-XX-XX

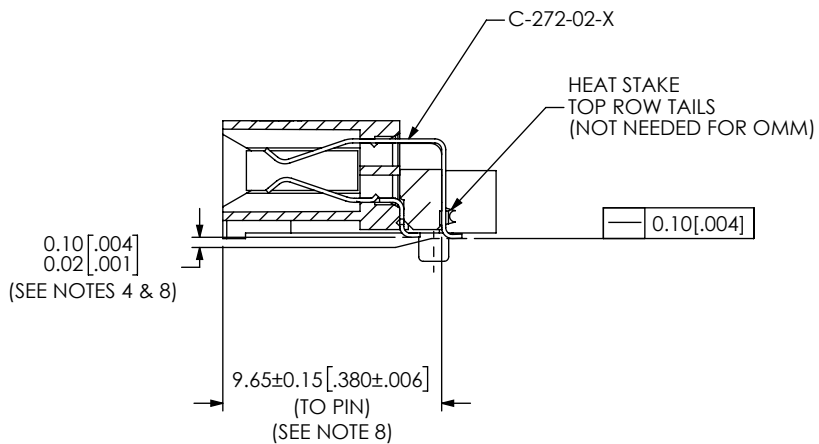
BY: ROY LUO 11/05/2008 SHEET 3 OF 4



IN-PROCESS VIEW 1
FILL FIRST ROW



IN-PROCESS VIEW 2
FILL SPACER



IN-PROCESS VIEW 3
FILL SECOND ROW

PROPRIETARY NOTE
 * THIS DOCUMENT CONTAINS CONFIDENTIAL AND PROPRIETARY INFORMATION AND ALL DESIGN, MANUFACTURING, REPRODUCTION, USE, PATENT RIGHTS AND SALES RIGHTS ARE EXPRESSLY RESERVED BY SAMTEC, INC. THIS DOCUMENT SHALL NOT BE DISCLOSED, IN WHOLE OR PART, TO ANY UNAUTHORIZED PERSON OR ENTITY NOR REPRODUCED, TRANSFERRED OR INCORPORATED IN ANY OTHER PROJECT IN ANY MANNER WITHOUT THE EXPRESS WRITTEN CONSENT OF SAMTEC, INC. *

DO NOT SCALE DRAWING
 SHEET SCALE: 3:1



520 PARK EAST BLVD. NEW ALBANY, IN 47150
 PHONE: 812-944-6733 FAX: 812-948-5047
 e-Mail info@SAMTEC.com code 55322

| | |
|--------------|---------------------------|
| DESCRIPTION: | 0.8MM HIGH SPEED ASSEMBLY |
| DWG. NO. | HSEC8-1XX-XX-X-RA-XX-XX |
| BY: ROY LUO | 11/05/2008 SHEET 4 OF 4 |