

Feed-through terminal block - PLC-VT



2296870

<https://www.phoenixcontact.com/us/products/2296870>

Please be informed that the data shown in this PDF document is generated from our Online Catalog. Please find the complete data in the user documentation. Our General Terms of Use for Downloads are valid.



VARIOFACE feed-through terminal block (2-conductor screw connection), for PLC-INTERFACE universal series

Your advantages

- Can be combined with PLC-INTERFACE universal series
- With LED as an option
- Signal path with additional potential level for free assignment (2-conductor connection)

Commercial Data

Item number	2296870
Packing unit	1 pc
Minimum order quantity	10 pc
Sales Key	C02
Product Key	CK21C3
Catalog Page	Page 532 (C-5-2019)
GTIN	4017918821609
Weight per Piece (including packing)	34.02 g
Weight per Piece (excluding packing)	27.6 g
Customs tariff number	85369010
Country of origin	DE

Feed-through terminal block - PLC-VT



2296870

<https://www.phoenixcontact.com/us/products/2296870>

Technical Data

Notes

Notes on operation	The necessary requirements for insulation (basic insulation or reinforced insulation) from adjacent modules (in DIN-rail direction) must be realized by applying suitable measures (e. g., partition plates).
Notes on operation	Ensure that the supply voltage of the device has a common reference potential.

Product properties

Product type	Feed-through terminal block
Insulation characteristics	
Overvoltage category	III
Pollution degree	2
Insulation	Functional insulation

Electrical properties

Nominal voltage U_N	250 V AC/DC
Max. current carrying capacity per branch	6 A (per signal conductor)
	6 A (per connection terminal block with jumper location)
Max. total current of voltage supply	6 A
Rated insulation voltage	300 V
Rated surge voltage	4 kV

Connection data

Supply

Connection method	Screw connection
Stripping length	8 mm
Screw thread	M3
Number of connections	1
Conductor cross section solid	0.2 mm ² ... 4 mm ²
Conductor cross section flexible	0.2 mm ² ... 2.5 mm ²
Conductor cross section AWG	24 ... 12
Connection method	Screw connection

LED signaling

Status display	No
Status display present	No

Dimensions

Width	6.2 mm
Height	80 mm
Depth	94 mm

Feed-through terminal block - PLC-VT



2296870

<https://www.phoenixcontact.com/us/products/2296870>

Material specifications

Flammability rating according to UL 94	V0
Housing insulation material	Polyamide 6.6 green

Environmental and real-life conditions

Ambient conditions

Degree of protection	IP20
Ambient temperature (operation)	-40 °C ... 70 °C
Ambient temperature (storage/transport)	-40 °C ... 70 °C

Standards and regulations

Air clearances and creepage distances

Standards/regulations	EN 60664-1
-----------------------	------------

Mounting

Mounting type	DIN rail mounting
Assembly instructions	in rows with zero spacing
Mounting position	any

Feed-through terminal block - PLC-VT

2296870

<https://www.phoenixcontact.com/us/products/2296870>



Drawings

Circuit diagram



Feed-through terminal block - PLC-VT



2296870

<https://www.phoenixcontact.com/us/products/2296870>

Approvals

cUL Recognized Approval ID: FILE E 238705				
	Nominal Voltage U_N	Nominal Current I_N	Cross Section AWG	Cross Section mm^2
	220 V	6 A	-	-

UL Recognized Approval ID: FILE E 238705				
	Nominal Voltage U_N	Nominal Current I_N	Cross Section AWG	Cross Section mm^2
	220 V	6 A	-	-

EAC Approval ID: RU*DE.*09.B.00387/20				
---	--	--	--	--

DNV GL Approval ID: TAE0000196				
	Nominal Voltage U_N	Nominal Current I_N	Cross Section AWG	Cross Section mm^2
			-	-

PRS Approval ID: TE/2109/880590/16				
--	--	--	--	--

cULus Recognized				
-------------------------	--	--	--	--

Feed-through terminal block - PLC-VT



2296870

<https://www.phoenixcontact.com/us/products/2296870>

Classifications

ECLASS

ECLASS-9.0	27371692
ECLASS-10.0.1	27371692
ECLASS-11.0	27371692

ETIM

ETIM 8.0	EC002586
----------	----------

UNSPSC

UNSPSC 21.0	39122300
-------------	----------

Feed-through terminal block - PLC-VT



2296870

<https://www.phoenixcontact.com/us/products/2296870>

Environmental Product Compliance

China RoHS	Environmentally friendly use period: unlimited = EFUP-e
	No hazardous substances above threshold values

Feed-through terminal block - PLC-VT

2296870

<https://www.phoenixcontact.com/us/products/2296870>



Accessories



Note: Applying some accessories below might limit this product.

Continuous plug-in bridge

Continuous plug-in bridge - FBST 500-PLC RD - 2966786

<https://www.phoenixcontact.com/us/products/2966786>



Continuous plug-in bridge, color: red

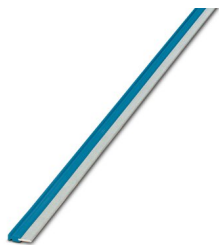


Max. current carrying capacity: 32 A

Continuous plug-in bridge

Continuous plug-in bridge - FBST 500-PLC BU - 2966692

<https://www.phoenixcontact.com/us/products/2966692>



Continuous plug-in bridge, color: blue



Max. current carrying capacity: 32 A

Feed-through terminal block - PLC-VT

2296870

<https://www.phoenixcontact.com/us/products/2296870>



Continuous plug-in bridge

Continuous plug-in bridge - FBST 500-PLC GY - 2966838

<https://www.phoenixcontact.com/us/products/2966838>



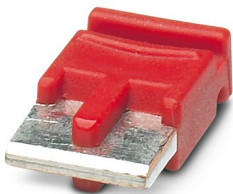
Continuous plug-in bridge, color: gray

 Max. current carrying capacity: 32 A


Single plug-in bridge

Single plug-in bridge - FBST 6-PLC RD - 2966236

<https://www.phoenixcontact.com/us/products/2966236>



Single plug-in bridge, color: red

 Max. current carrying capacity: 6 A

Feed-through terminal block - PLC-VT

2296870

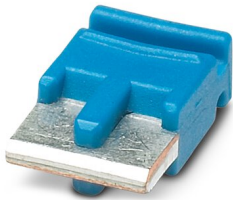
<https://www.phoenixcontact.com/us/products/2296870>



Single plug-in bridge

Single plug-in bridge - FBST 6-PLC BU - 2966812

<https://www.phoenixcontact.com/us/products/2966812>



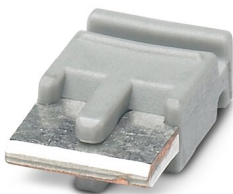
Single plug-in bridge, color: blue

 Max. current carrying capacity: 6 A


Single plug-in bridge

Single plug-in bridge - FBST 6-PLC GY - 2966825

<https://www.phoenixcontact.com/us/products/2966825>



Single plug-in bridge, color: gray

 Max. current carrying capacity: 6 A

Feed-through terminal block - PLC-VT

2296870

<https://www.phoenixcontact.com/us/products/2296870>




Single plug-in bridge

Single plug-in bridge - FBST 8-PLC GY - 2967688

<https://www.phoenixcontact.com/us/products/2967688>

Single plug-in bridge, color: gray



 Max. current carrying capacity: 6 A

DIN rail, unperforated

DIN rail, unperforated - NS 35/ 7,5 V2A UNPERF 2000MM - 0801377

<https://www.phoenixcontact.com/us/products/0801377>



DIN rail, unperforated, acc. to EN 60715, material: Stainless steel V2A, uncoated, Standard profile, color: silver, Pack of 25 (50 m)

Feed-through terminal block - PLC-VT

2296870

<https://www.phoenixcontact.com/us/products/2296870>



DIN rail perforated

DIN rail perforated - NS 35/ 7,5 PERF 2000MM - 0801733

<https://www.phoenixcontact.com/us/products/0801733>



DIN rail perforated, acc. to EN 60715, material: Steel, galvanized, passivated with a thick layer, Standard profile, color: silver, Pack of 25 (50 m)

DIN rail, unperforated

DIN rail, unperforated - NS 35/ 7,5 CU UNPERF 2000MM-VPE 10 - 0801762

<https://www.phoenixcontact.com/us/products/0801762>



DIN rail, unperforated, acc. to EN 60715, material: Copper, uncoated, Standard profile, color: copper-colored, Pack of 10 (20 m)

Feed-through terminal block - PLC-VT

2296870

<https://www.phoenixcontact.com/us/products/2296870>

DIN rail, unperforated

DIN rail, unperforated - NS 35/15 UNPERF 2000MM - 1201714

<https://www.phoenixcontact.com/us/products/1201714>



DIN rail, unperforated, similar to EN 60715, material: Steel, galvanized, passivated with a thick layer, Standard profile, color: silver, Pack of 25 (50 m)

DIN rail, unperforated

DIN rail, unperforated - NS 35/15 CU UNPERF 2000MM-VPE 10 - 1201895

<https://www.phoenixcontact.com/us/products/1201895>



DIN rail, unperforated, similar to EN 60715, material: Copper, uncoated, Standard profile, color: copper-colored, Pack of 10 (20 m)

Feed-through terminal block - PLC-VT

2296870

<https://www.phoenixcontact.com/us/products/2296870>



DIN rail, unperforated

DIN rail, unperforated - NS 35/15-2,3 UNPERF 2000MM-VPE 10 - 1201798

<https://www.phoenixcontact.com/us/products/1201798>



DIN rail, unperforated, acc. to EN 60715, material: Steel, galvanized, passivated with a thick layer, Standard profile 2.3 mm, color: silver, Pack of 10 (20 m)

DIN rail, unperforated

DIN rail, unperforated - NS 35/15 AL UNPERF 2000MM - 1201756

<https://www.phoenixcontact.com/us/products/1201756>



DIN rail, unperforated, similar to EN 60715, material: Aluminum, uncoated, Standard profile, color: silver

Feed-through terminal block - PLC-VT



2296870

<https://www.phoenixcontact.com/us/products/2296870>

DIN rail perforated

DIN rail perforated - NS 35/15 PERF 2000MM - 1201730

<https://www.phoenixcontact.com/us/products/1201730>



DIN rail perforated, similar to EN 60715, material: Steel, galvanized, passivated with a thick layer, Standard profile, color: silver, Pack of 25 (50 m)

DIN rail, unperforated

DIN rail, unperforated - NS 35/ 7,5 UNPERF 2000MM - 0801681

<https://www.phoenixcontact.com/us/products/0801681>



DIN rail, unperforated, acc. to EN 60715, material: Steel, galvanized, passivated with a thick layer, Standard profile, color: silver, Pack of 25 (50 m)

Feed-through terminal block - PLC-VT

2296870

<https://www.phoenixcontact.com/us/products/2296870>



Power terminal block

Power terminal block - PLC-ESK GY - 2966508

<https://www.phoenixcontact.com/us/products/2966508>



Power terminal block, for the input of up to four potentials, for mounting on NS 35/7.5

Separating plate

Separating plate - PLC-ATP BK - 2966841

<https://www.phoenixcontact.com/us/products/2966841>



Separating plate, 2 mm thick, required at the start and end of a PLC terminal strip. Furthermore, it is used for: visual separation of groups, safe isolation of different voltages of neighboring PLC relays in acc. with DIN VDE 0106-101, isolation

Feed-through terminal block - PLC-VT



2296870

<https://www.phoenixcontact.com/us/products/2296870>

Screwdriver

Screwdriver - SZF 1-0,6X3,5 - 1204517

<https://www.phoenixcontact.com/us/products/1204517>



Actuation tool, for ST terminal blocks, also suitable for use as a bladed screwdriver, size: 0.6 x 3.5 x 100 mm, 2-component grip, with non-slip grip

Zack marker strip

Zack marker strip - ZB 6,LGS:FORTL.ZAHLEN - 1051016

<https://www.phoenixcontact.com/us/products/1051016>



Zack marker strip, Strip, white, labeled, can be labeled with: CMS-P1-PLOTTER, printed horizontally: consecutive numbers 1 ... 10, 11 ... 20, etc. up to 491 ... 500, mounting type: snapped, for terminal block width: 6.2 mm, lettering field size: 6.15 x 10.5 mm, Number of individual labels: 10

Feed-through terminal block - PLC-VT



2296870

<https://www.phoenixcontact.com/us/products/2296870>

Zack marker strip

Zack marker strip - ZB 6:UNBEDRUCKT - 1051003

<https://www.phoenixcontact.com/us/products/1051003>



Zack marker strip, Strip, white, unlabeled, can be labeled with: PLOTMARK, CMS-P1-PLOTTER, mounting type: snapped, for terminal block width: 6.2 mm, lettering field size: 6.15 x 10.5 mm, Number of individual labels: 10

Zack marker strip

Zack marker strip - ZB 6/WH-100:UNBEDRUCKT - 5060935

<https://www.phoenixcontact.com/us/products/5060935>



Zack marker strip, Strip, white, unlabeled, can be labeled with: PLOTMARK, CMS-P1-PLOTTER, mounting type: snapped, for terminal block width: 6.2 mm, lettering field size: 6.15 x 10.5 mm, Number of individual labels: 1000

Feed-through terminal block - PLC-VT

2296870

<https://www.phoenixcontact.com/us/products/2296870>

System connection

System connection - PLC-V8/FLK14/OUT - 2295554

<https://www.phoenixcontact.com/us/products/2295554>



V8 adapter for 8 x PLC-INTERFACE (6.2 mm), controller: PLC system cabling of output cards, connection 1: Screw connection 1x, connection 2: IDC/FLK pin strip 1x 14-position, connection 3: Plug-in connection (Can be snapped onto 8x PLC-INTERFACE terminals), number of channels: 8, control logic: plusschaltend

System connection

System connection - PLC-V8/FLK14/OUT/M - 2304102

<https://www.phoenixcontact.com/us/products/2304102>



V8 adapter for 8 x PLC-INTERFACE (6.2 mm), controller: PLC system cabling of output cards, connection 1: Screw connection 1x, connection 2: IDC/FLK pin strip 1x 14-position, connection 3: Plug-in connection (Can be snapped onto 8x PLC-INTERFACE terminals), number of channels: 8, control logic: minusschaltend

Feed-through terminal block - PLC-VT

2296870

<https://www.phoenixcontact.com/us/products/2296870>

Adapter module

Adapter module - PLC-V8/D15S/OUT - 2296058

<https://www.phoenixcontact.com/us/products/2296058>

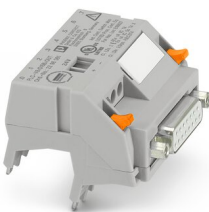


V8 adapter for 8 x PLC-INTERFACE (6.2 mm), controller: PLC system cabling of output cards, connection 1: Screw connection 1x, connection 2: D-SUB pin strip 1x 15-position, connection 3: Plug-in connection (Can be snapped onto 8x PLC-INTERFACE terminals), number of channels: 8, control logic: plusschaltend

System connection

System connection - PLC-V8/D15B/OUT - 2296061

<https://www.phoenixcontact.com/us/products/2296061>



V8 adapter for 8 x PLC-INTERFACE (6.2 mm), controller: PLC system cabling of output cards, connection 1: Screw connection 1x, connection 2: D-SUB socket strip 1x 15-position, connection 3: Plug-in connection (Can be snapped onto 8x PLC-INTERFACE terminals), number of channels: 8, control logic: plusschaltend

Feed-through terminal block - PLC-VT

2296870

<https://www.phoenixcontact.com/us/products/2296870>

System connection

System connection - PLC-V8/FLK14/IN - 2296553

<https://www.phoenixcontact.com/us/products/2296553>



V8 adapter for 8 x PLC-INTERFACE (6.2 mm), controller: PLC system cabling of input cards, connection 1: Screw connection 1x, connection 2: IDC/FLK pin strip 1x 14-position, connection 3: Plug-in connection (Can be snapped onto 8x PLC-INTERFACE terminals), number of channels: 8, control logic: plusschaltend

System connection

System connection - PLC-V8/FLK14/IN/M - 2304115

<https://www.phoenixcontact.com/us/products/2304115>



V8 adapter for 8 x PLC-INTERFACE (6.2 mm), controller: PLC system cabling of input cards, connection 1: Screw connection 1x, connection 2: IDC/FLK pin strip 1x 14-position, connection 3: Plug-in connection (Can be snapped onto 8x PLC-INTERFACE terminals), number of channels: 8, control logic: minusschaltend

Feed-through terminal block - PLC-VT



2296870

<https://www.phoenixcontact.com/us/products/2296870>

System connection

System connection - PLC-V8/D15S/IN - 2296074

<https://www.phoenixcontact.com/us/products/2296074>

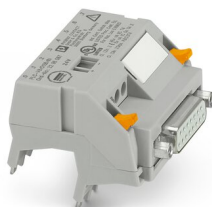


V8 adapter for 8 x PLC-INTERFACE (6.2 mm), controller: PLC system cabling of input cards, connection 1: Screw connection 1x, connection 2: D-SUB pin strip 1x 15-position, connection 3: Plug-in connection (Can be snapped onto 8x PLC-INTERFACE terminals), number of channels: 8, control logic: plusschaltend

System connection

System connection - PLC-V8/D15B/IN - 2296087

<https://www.phoenixcontact.com/us/products/2296087>



V8 adapter for 8 x PLC-INTERFACE (6.2 mm), controller: PLC system cabling of input cards, connection 1: Screw connection 1x, connection 2: D-SUB socket strip 1x 15-position, connection 3: Plug-in connection (Can be snapped onto 8x PLC-INTERFACE terminals), number of channels: 8, control logic: plusschaltend

Phoenix Contact 2022 © - all rights reserved
<https://www.phoenixcontact.com>

Phoenix Contact USA
586 Fulling Mill Road
Middletown, PA 17057, United States
(+717) 944-1300
info@phoenixcon.com