

4

3

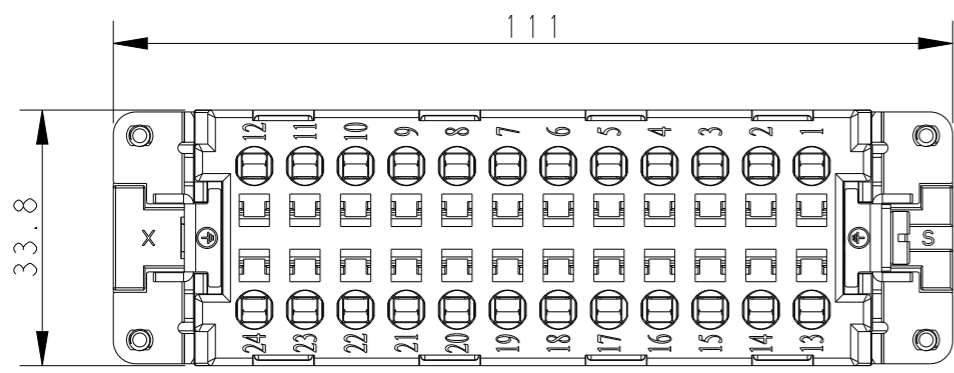
2

1

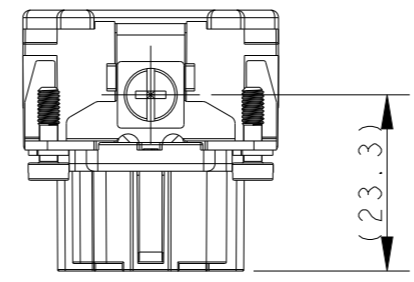
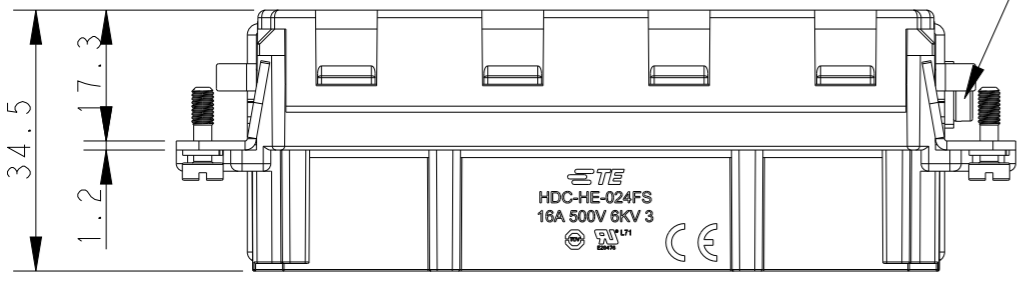
THIS DRAWING IS UNPUBLISHED. RELEASED FOR PUBLICATION 20
© COPYRIGHT 20 BY - ALL RIGHTS RESERVED.

REVISIONS

P	LTR	DESCRIPTION	DATE	DWN	APVD
	A	INITIAL	05Jan2015	GY	CW
	A1	ECR-15-004309	24Mar2015	GY	CW
	B	ECR-15-013759	26Sep2015	DW	CW
	C	ECR-21-106515	21JUL2021	SQ	CW



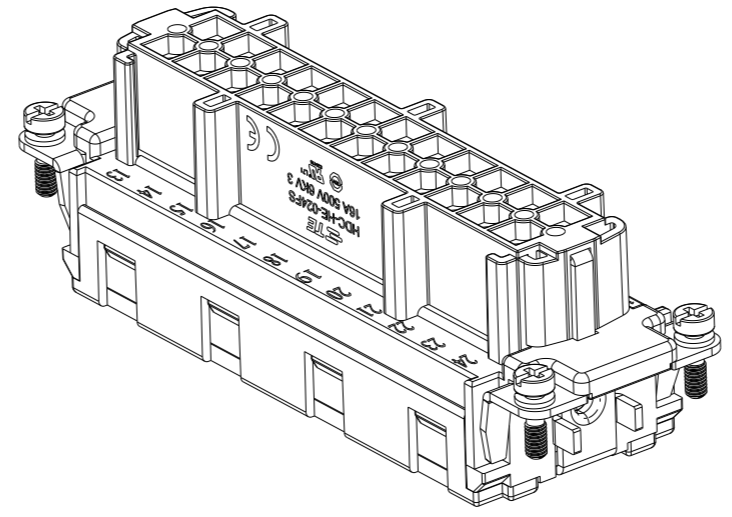
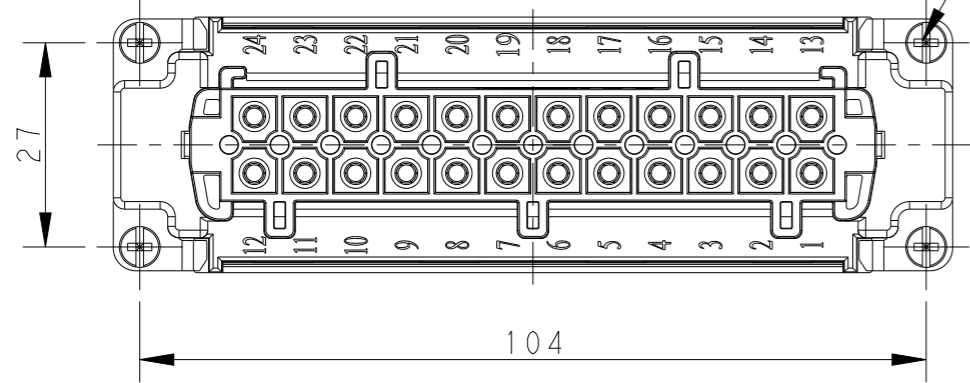
M4 screw, recommended tightening torque 1.2Nm



NOTES:

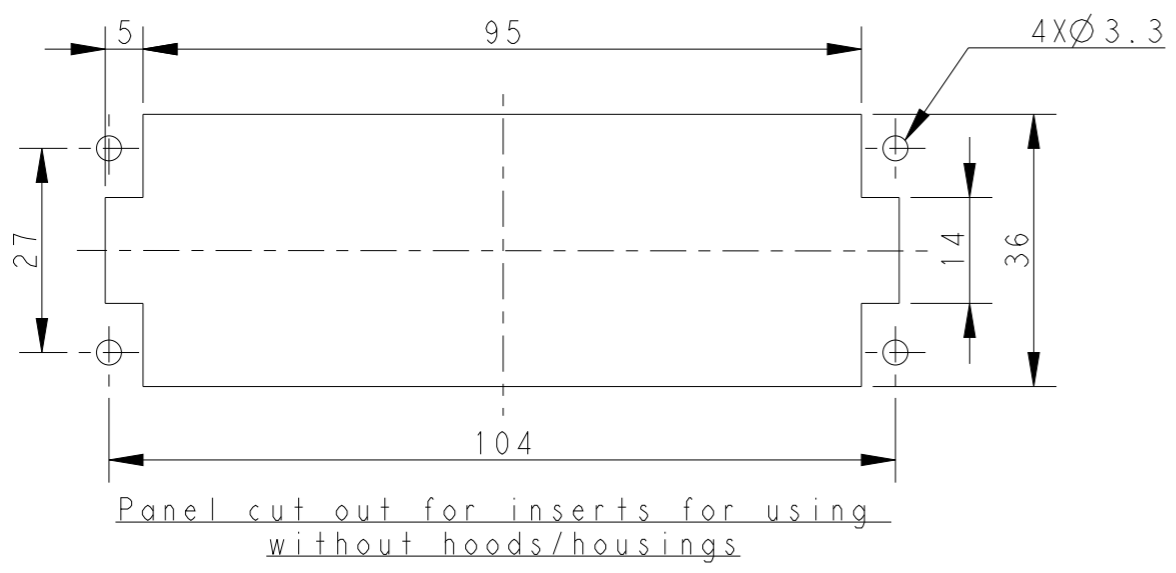
- 1. TECHNICAL CHARACTERISTICS:
 - INSULATION MATERIAL: PC
 - RATED VOLTAGE: 500V
 - RATED CURRENT: 16A
 - INSULATION RESISTANCE: >=400MΩ
 - RATED IMPULSE VOLTAGE: 6KV
 - POLLUTION DEGREE: 3
 - FLAMMABILITY: UL94V-0
 - MATING CYCLES: 500 CYCLES
 - OPERATION TEMPERATURE: -40°C~+125°C
 - WIRE RANGE: 0.5mm²~2.5mm² (AWG20-AWG14)
 - CONTACT TYPE: SPRING CLAMP

4 X M3 screw, recommended tightening torque 0.5Nm



注释:

- 1. 技术参数:
 - 绝缘材料: PC
 - 额定电压: 500V
 - 额定电流: 16A
 - 绝缘电阻: >=400MΩ
 - 脉冲电压: 6KV
 - 污染等级: 3
 - 阻燃等级: UL94V-0
 - 插拔次数: 500 次
 - 工作温度: -40°C~+125°C
 - 接线范围: 0.5mm²~2.5mm² (AWG20-AWG14)
 - 接线类型: 弹片压接



THIS DRAWING IS A CONTROLLED DOCUMENT.		DWN	Gino.Yao	18Aug2014
DIMENSIONS: mm		CHK	Chris.Wang	18Aug2014
TOLERANCES UNLESS OTHERWISE SPECIFIED:		APVD	Xiang.Xu	18Aug2014
0 PLC	±-	PRODUCT SPEC	108-137044	
1 PLC	±-	APPLICATION SPEC	114-137044	
2 PLC	±-	WEIGHT	-	
3 PLC	±-	CUSTOMER DRAWING	-	
4 PLC	±-	SCALE	1:1	
ANGLES	±-	SHEET	1 OF 1	
FINISH	-	REV	C	

HE-024-FS		T2040243201-000		
DESCRIPTION		PART NUMBER		
		TE Connectivity		
		NAME: HE-024-FS		
SIZE	CAGE CODE	DRAWING NO	RESTRICTED TO	
A3	00779	©-T2040243201000	-	
SCALE		SHEET		REV
1:1		1 OF 1		C