

DO NOT SCALE FROM THIS PRINT

No. OF POS	"C"	"D"
-016	.838 [21.27]	.788 [20.00]
-032	1.625 [41.28]	1.575 [40.01]
-048	2.413 [61.28]	2.363 [60.01]
*-064	3.200 [81.28]	3.150 [80.01]
*-080	3.988 [101.28]	3.938 [100.01]

* = SEE NOTES 11 & 13

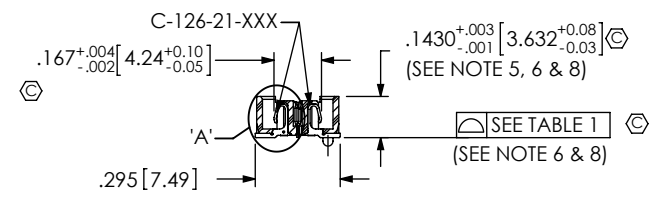
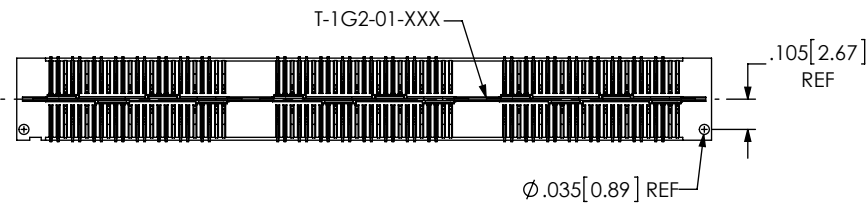
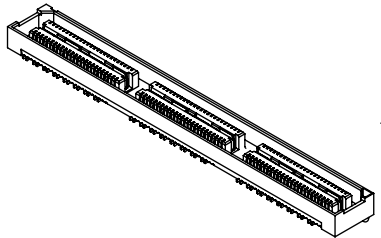
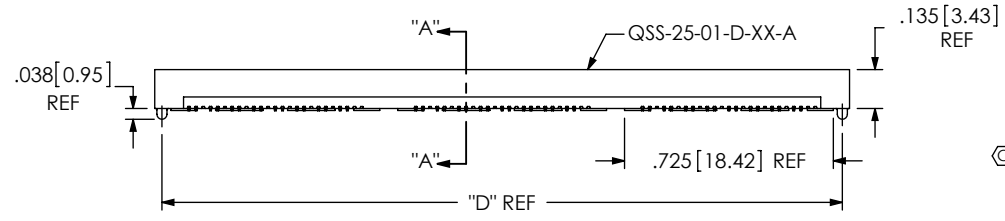
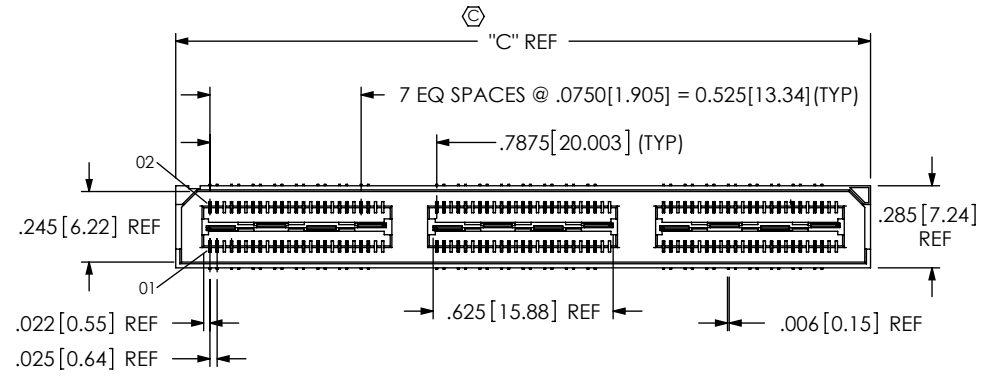
ASO ONLY (APPLICATION SPECIFIC ORDER)

No OF POSITIONS	COPLANARITY (INCLUDES GND PLANE)
-016 THRU -032	.004[0.10]
-048, *-064, *-080	.006[0.15]

* = SEE NOTES 11 & 13

QSS-XXX-XX-XXX-D-DP-XXX

- No OF POSITIONS
-016, -032, -048, *-064, *-080 (PER ROW)
* SEE NOTES 11 & 13
- LEAD STYLE
-01: .1430[3.632]
- PLATING SPECIFICATION (SEE NOTES 7 & 9)
-F: 3µ" FLASH SELECTIVE GOLD IN CONTACT AREA, MATTE TIN ON TAIL (USE C-126-21-F & T-1G2-01-F) (SEE NOTE 7)
-L: 10µ" LIGHT SELECTIVE GOLD, IN CONTACT AREA, MATTE TIN ON TAIL (USE C-126-21-L & T-1G2-01-L)
-H: 30µ" HEAVY GOLD IN CONTACT AREA, 3µ" GOLD ON TAIL (USE C-126-21-H & T-1G2-01-G)
-STL: 30µ" HEAVY SELECTIVE GOLD IN CONTACT AREA, TIN LEAD ON TAIL (USE C-126-21-STL & T-1G2-01-STL)
-FTL: 3µ" FLASH SELECTIVE GOLD IN CONTACT AREA, TIN LEAD ON TAIL (USE C-126-21-FTL & T-1G2-01-FTL)
- OPTION
-A: ALIGNMENT PINS (USE QSS-25-01-D-XX-A) (NOT AVAILABLE WITH -LC)
-LC: LOCKING CLIPS (SEE NOTE 12) (USE LC-08-TM-01) (SEE FIG 2, SHT 2) (NOT AVAILABLE WITH -A)
-K: POLYIMIDE FILM PAD (USE K-850-650) (SEE FIG 3, SHT 2)
-TR: TAPE & REEL (48 POS MAX) (32 POS MAX FOR -GP OPTION)
-GP: GUIDE POSTS (USE QSS-25-01-D-XX-X-GP) (SEE FIG 4, SHT 3) (NOT AVAILABLE WITH -LS2)
-LS2: LOCKING SCREW (USE QSS-25-01-D-XX-LS2) (SEE FIG 5, SHT 3) (NOT AVAILABLE WITH -GP) (FOR MATING WITH QTS-...-RA-LS2)
- DIFFERENTIAL PAIRS
ROW SPECIFICATION
-D: DOUBLE (USE QSS-25-XX-D-XX)
- No OF BANKS



SECTION "A"- "A"

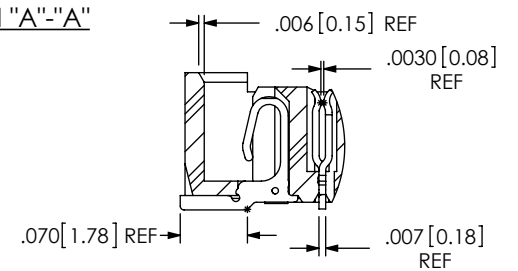


FIG 1
-A: ALIGNMENT PIN OPTION (QSS-048-01-XXX-D-DP-A SHOWN)

DETAIL 'A'
SCALE 5:1

- NOTES:
1. MINIMUM CONTACT RETENTION: 5 OZ
 2. MINIMUM GROUND PLANE RETENTION: 8 OZ
 3. © REPRESENTS A CRITICAL DIMENSION.
 4. PARTS ARE MOLD TO POSITION.
 5. MAX VARIANCE: .002[0.05].
 6. DIMENSION APPLIES TO CONTACTS AND GROUND PLANES, INDEPENDENT OF EACH OTHER.
 7. -L PLATING CAN BE SUBSTITUTED FOR -F PLATING.
 8. GROUND PLANE PRESS HEIGHT MUST BE .003[.08] LESS THAN THE MAXIMUM HEIGHT OR .001[0.03] GREATER THAN THE MINIMUM HEIGHT OF THE SIGNAL PIN.
 9. MAY SUBSTITUTE C-126-01-XXX FOR C-126-21-XXX.
 10. NOTE DELETED.
 11. FOR -064 AND -080 POSITIONS USE C-269-11-XXX. DO NOT SUB C-126-01-XXX
 12. DUE TO THE HIGH AMOUNT OF INSERTION FORCE NEEDED, THE -LC OPTION IS NOT COMPATIBLE WITH AUTO PLACEMENT. SAMTEC RECOMMENDS MANUAL PLACEMENT FOR ALL ASSEMBLIES WITH THE -LC OPTION.
 13. AVAILABLE FOR EXISTING CUSTOMERS ONLY.

<p>UNLESS OTHERWISE SPECIFIED, DIMENSIONS ARE IN INCHES. TOLERANCES ARE:</p> <p>DECIMALS ANGLES</p> <p>.XX: ±.01[.3] 2°</p> <p>.XXX: ±.005[.13]</p> <p>.XXXX: ±.0020[.05]</p>	<p>PROPRIETARY NOTE</p> <p>THIS DOCUMENT CONTAINS CONFIDENTIAL AND PROPRIETARY INFORMATION AND ALL DESIGN, MANUFACTURING, REPRODUCTION, USE, PATENT RIGHTS AND SALES RIGHTS ARE EXPRESSLY RESERVED BY SAMTEC, INC. THIS DOCUMENT SHALL NOT BE DISCLOSED, IN WHOLE OR PART, TO ANY UNAUTHORIZED PERSON OR ENTITY NOR REPRODUCED, TRANSFERRED OR INCORPORATED IN ANY OTHER PROJECT IN ANY MANNER WITHOUT THE EXPRESS WRITTEN CONSENT OF SAMTEC, INC.</p>		
		<p>520 PARK EAST BLVD. NEW ALBANY, IN 47150 PHONE: 812-944-6733 FAX: 812-948-5047 e-Mail: info@SAMTEC.com code 55322</p>	
<p>MATERIAL: DO NOT SCALE DRAWING SHEET SCALE: 1.5:1</p> <p>INSULATOR: LCP, UL94V-0; COLOR: BLACK CONTACT: PHOS BRONZE GROUND PLANE: PHOS BRONZE</p>		<p>DESCRIPTION: .635mm DIFFERENTIAL PAIRS HS SOCKET ASSEMBLY</p> <p>DWG. NO. QSS-XXX-XX-XXX-D-DP-XXX</p>	
<p>F:\DWG\MISC\MKTG\QSS-XXX-XX-XXX-D-DP-XXX-MKT.SLDDRW</p>		<p>BY: KEVIN B 07/10/2000 SHEET 1 OF 3</p>	

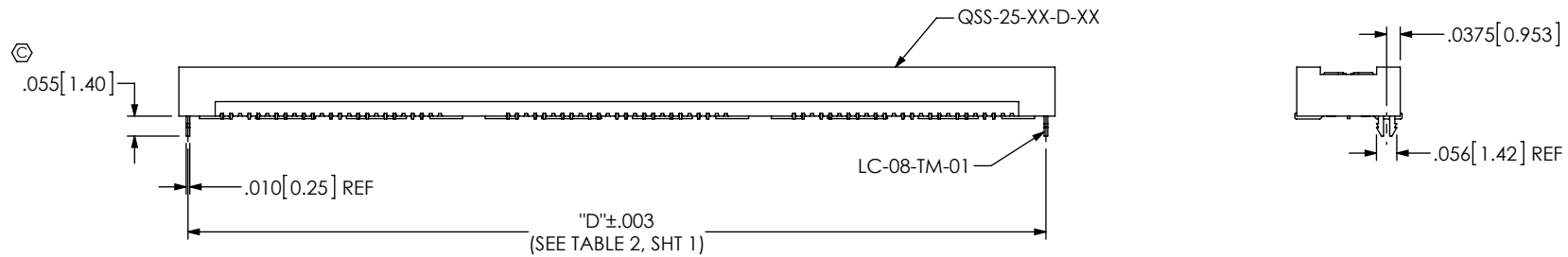


FIG 2
 -LC: LOCKING CLIP OPTION
 (QSS-048-01-XXX-D-DP-LC SHOWN)
 (DIFFERENT AS SHOWN, OTHERWISE SAME AS FIG 1)

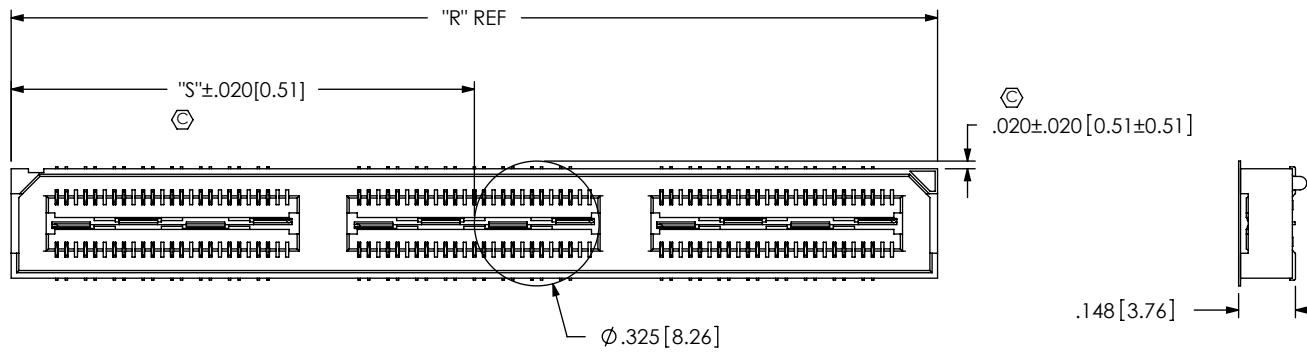


FIG 3
 -K: POLYIMIDE FILM PAD
 (USE K-850-650)

TABLE 3

No OF POS	"R"			"S"		
	-LC, -A	-GP	-LS2	-LC, -A	-GP	-LS2
-016	.838 [21.27]	1.217 [30.90]	1.338 [33.97]	.256 [6.51]	.446 [11.32]	.506 [12.86]
-032	1.625 [41.28]	2.004 [50.90]	2.125 [53.98]	.650 [16.51]	.840 [21.32]	.900 [22.86]
-048	2.413 [61.28]	2.792 [70.90]	2.913 [73.98]	1.044 [26.51]	1.233 [31.32]	1.294 [32.86]
*-064	3.200 [81.28]	3.579 [90.91]	3.700 [93.98]	1.438 [36.51]	1.627 [41.33]	1.688 [42.86]
*-080	3.988 [101.28]	4.367 [110.91]	4.488 [113.98]	1.831 [46.51]	2.021 [51.33]	2.081 [52.86]

* = SEE NOTES 11 & 13

PROPRIETARY NOTE
 THIS DOCUMENT CONTAINS CONFIDENTIAL AND PROPRIETARY INFORMATION AND ALL DESIGN, MANUFACTURING, REPRODUCTION, USE, PATENT RIGHTS AND SALES RIGHTS ARE EXPRESSLY RESERVED BY SAMTEC, INC. THIS DOCUMENT SHALL NOT BE DISCLOSED, IN WHOLE OR PART, TO ANY UNAUTHORIZED PERSON OR ENTITY NOR REPRODUCED, TRANSFERRED OR INCORPORATED IN ANY OTHER PROJECT IN ANY MANNER WITHOUT THE EXPRESS WRITTEN CONSENT OF SAMTEC, INC.



520 PARK EAST BLVD, NEW ALBANY, IN 47150
 PHONE: 812-944-6733 FAX: 812-948-5047
 e-Mail info@SAMTEC.com code 55322

DO NOT SCALE DRAWING

SHEET SCALE: 2:1

DESCRIPTION:
 .635mm DIFFERENTIAL PAIRS HS SOCKET ASSEMBLY

DWG. NO.
QSS-XXX-XX-XXX-D-DP-XXX

BY: KEVIN B 07/10/2000 SHEET 2 OF 3

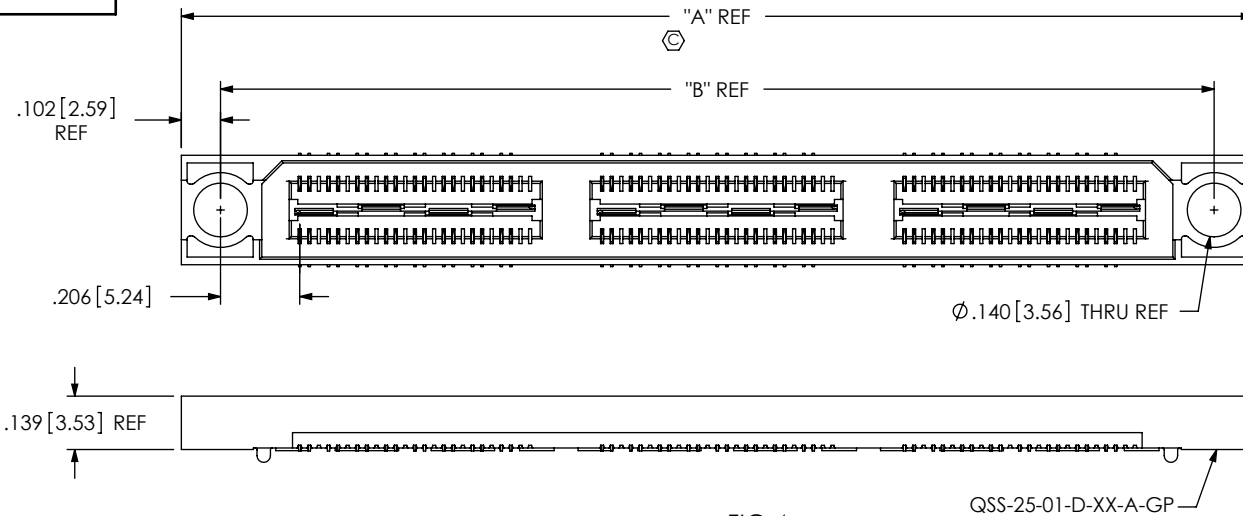


FIG 4
 -GP: GUIDE POST OPTION
 (QSS-048-01-XXX-D-DP-GP SHOWN)
 (DIFFERENT AS SHOWN, OTHERWISE SAME AS FIG 1)
 (32 POS MAX FOR TAPE & REEL OFFERING)

POSITIONS	"A"	"B"
-016	1.217[30.90]	1.013[25.72]
-032	2.004[50.90]	1.800[45.72]
-048	2.792[70.90]	2.588[65.72]
*-064	3.580[90.91]	3.375[85.73]
*-080	4.367[110.9]	4.163[105.73]

* = SEE NOTES 11 & 13

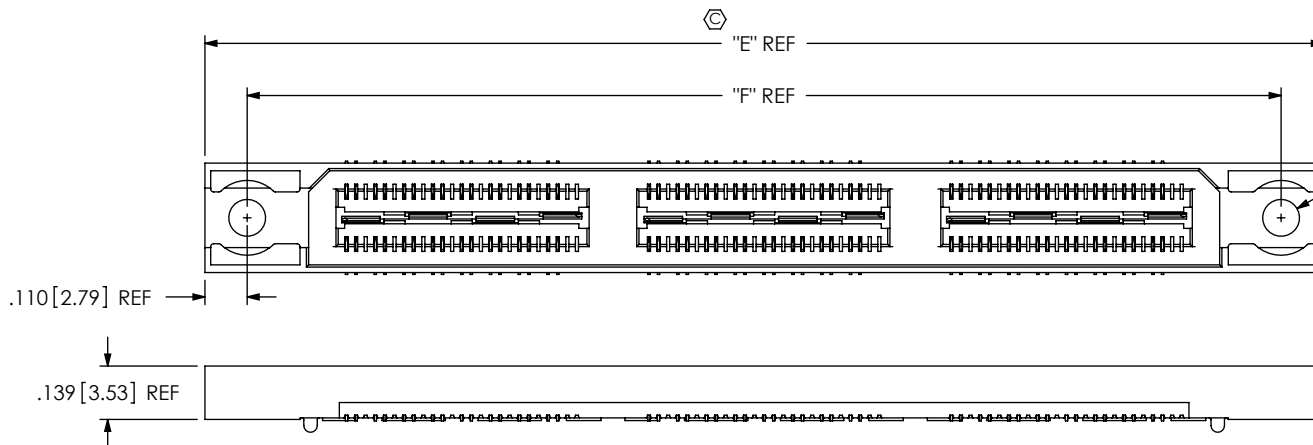


FIG 5
 -LS2: LOCKING SCREW OPTION
 (QSS-048-01-XXX-D-DP-LS2 SHOWN)
 (DIFFERENT AS SHOWN, OTHERWISE SAME AS FIG 1)
 (NOT AVAILABLE WITH -GP OPTION)

Ø.096 [2.44] REF
 (CLEARANCE HOLE FOR USE WITH 2-56 SCREW)

POS	"E"	"F"
-016	1.338 [33.97]	1.118 [28.38]
-032	2.125 [53.98]	1.905 [48.39]
-048	2.913 [73.98]	2.693 [68.39]
*-064	3.700 [93.98]	3.480 [88.39]
*-080	4.488 [113.98]	4.268 [108.39]

* = SEE NOTES 11 & 13

PROPRIETARY NOTE
 THIS DOCUMENT CONTAINS CONFIDENTIAL AND PROPRIETARY INFORMATION AND ALL DESIGN, MANUFACTURING, REPRODUCTION, USE, PATENT RIGHTS AND SALES RIGHTS ARE EXPRESSLY RESERVED BY SAMTEC, INC. THIS DOCUMENT SHALL NOT BE DISCLOSED, IN WHOLE OR PART, TO ANY UNAUTHORIZED PERSON OR ENTITY NOR REPRODUCED, TRANSFERRED OR INCORPORATED IN ANY OTHER PROJECT IN ANY MANNER WITHOUT THE EXPRESS WRITTEN CONSENT OF SAMTEC, INC.



520 PARK EAST BLVD, NEW ALBANY, IN 47150
 PHONE: 812-944-6733 FAX: 812-948-5047
 e-Mail: info@SAMTEC.com code 55322

DO NOT SCALE DRAWING

SHEET SCALE: 2:1

DESCRIPTION:
 .635mm DIFFERENTIAL PAIRS HS SOCKET ASSEMBLY

DWG. NO.
QSS-XXX-XX-XXX-D-DP-XXX

BY: KEVIN B 07/10/2000 SHEET 3 OF 3