

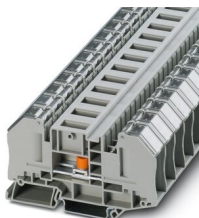
Test disconnect terminal block - RTO 5-T-TC



3049990

<https://www.phoenixcontact.com/us/products/3049990>

Please be informed that the data shown in this PDF document is generated from our Online Catalog. Please find the complete data in the user documentation. Our General Terms of Use for Downloads are valid.



Test disconnect terminal block with bolt connection technology and transparent safety contact hood, cross section: 0.1 - 6 mm², AWG: 26 - 10, width 16.3 mm, color: gray

Your advantages

- Four bridge shafts per terminal block
- Terminal point always freely accessible
- Easy bridging and potential distribution using the patented plug-in bridges from the CLIPLINE complete system
- The screws are secured against loosening by captive spring-loaded spacers
- Large-surface labeling options in the terminal center and above the terminal points
- The use of the switching lock effectively prevents unintentional switching

Commercial Data

Item number	3049990
Packing unit	1 pc
Minimum order quantity	25 pc
Note	Made to Order (non-returnable)
Sales Key	B04
Product Key	BE4333
Catalog Page	Page 382 (C-1-2019)
GTIN	4046356431408
Weight per Piece (including packing)	44.54 g
Weight per Piece (excluding packing)	37.16 g
Customs tariff number	85369010
Country of origin	CN

Test disconnect terminal block - RTO 5-T-TC



3049990

<https://www.phoenixcontact.com/us/products/3049990>

Technical Data

Notes

General	Note: the BE-RT... path extension is to be used for non-insulated cable lugs (see accessories).
---------	---

Product properties

Product type	Bolt connection terminal block
Number of connections	2
Number of rows	1
Potentials	1

Insulation characteristics

Overvoltage category	III
Degree of pollution	3

Electrical properties

Rated surge voltage	6 kV
Maximum power dissipation for nominal condition	1.31 W

Connection data

Number of connections per level	2
Nominal cross section	6 mm ²
Stripping length	The stripping length depends on the specification provided by the cable lug manufacturer.
Connection in acc. with standard	IEC 60947-7-1
Nominal current	41 A
Maximum load current	41 A (with 6 mm ² conductor cross section)
Nominal voltage	500 V
Nominal cross section	6 mm ²

Disconnect slide

Screw thread	M4
--------------	----

Cable lug connection DIN 46234:1980-03

Connection in acc. with standard	DIN 46234:1980-03
Cross section	0.5 mm ² ... 6 mm ²
Cross section range AWG	20 ... 10 (converted acc. to IEC)
Hole diameter	5.3 mm
Width	10 mm
Bolt diameter	5 mm
Screw thread	M5
Tightening torque	2.5 ... 3 Nm
Connection in acc. with standard	DIN 46237:1970-07
Cross section	1 mm ² ... 6 mm ²

Test disconnect terminal block - RTO 5-T-TC



3049990

<https://www.phoenixcontact.com/us/products/3049990>

Cross section range AWG	16 ... 10 (converted acc. to IEC)
Hole diameter	5.3 mm
Width	10 mm
Bolt diameter	5 mm
Screw thread	M5
Tightening torque	2.5 ... 3 Nm
Identification color of ring cable lugs : red	1 mm ²
Identification color of ring cable lugs : blue	2.5 mm ²
Identification color of ring cable lugs : yellow	6 mm ²

Dimensions

Width	16.3 mm
End cover width	2.2 mm
Height NS 35/15	58.5 mm
Height NS 35/7,5	51 mm
Length	91.4 mm

Material specifications

Color	gray
Flammability rating according to UL 94	V0
Insulating material group	I
Insulating material	PA
Static insulating material application in cold	-60 °C
Temperature index of insulation material (DIN EN 60216-1 (VDE 0304-21))	130 °C
Relative insulation material temperature index (Elec., UL 746 B)	130 °C
Fire protection for rail vehicles (DIN EN 45545-2) R22	HL 1 - HL 3
Fire protection for rail vehicles (DIN EN 45545-2) R23	HL 1 - HL 3
Fire protection for rail vehicles (DIN EN 45545-2) R24	HL 1 - HL 3
Fire protection for rail vehicles (DIN EN 45545-2) R26	HL 1 - HL 3
Calorimetric heat release NFPA 130 (ASTM E 1354)	28 MJ/kg
Surface flammability NFPA 130 (ASTM E 162)	passed
Specific optical density of smoke NFPA 130 (ASTM E 662)	passed
Smoke gas toxicity NFPA 130 (SMP 800C)	passed

Electrical tests

Surge voltage test

Result	Test passed
--------	-------------

Temperature-rise test

Requirement temperature-rise test	Increase in temperature ≤ 45 K
Result	Test passed
Short-time withstand current 6 mm ²	0.72 kA
Result	Test passed

Test disconnect terminal block - RTO 5-T-TC



3049990

<https://www.phoenixcontact.com/us/products/3049990>

Power-frequency withstand voltage

Test voltage setpoint	2.2 kV
Result	Test passed

Mechanical properties

Mechanical data

Open side panel	Yes
-----------------	-----

Mechanical tests

Mechanical strength

Result	Test passed
--------	-------------

Environmental and real-life conditions

Needle-flame test

Time of exposure	30 s
Result	Test passed

Oscillation/broadband noise

Specification	DIN EN 50155 (VDE 0115-200):2018-05
Spectrum	Service life test category 2, bogie-mounted
Frequency	$f_1 = 5 \text{ Hz}$ to $f_2 = 250 \text{ Hz}$
ASD level	$6.12 \text{ (m/s}^2\text{)}^2/\text{Hz}$
Acceleration	3.12g
Test duration per axis	5 h
Test directions	X-, Y- and Z-axis

Shocks

Specification	DIN EN 50155 (VDE 0115-200):2008-03
Pulse shape	Half-sine
Acceleration	30g
Shock duration	18 ms
Number of shocks per direction	3
Test directions	X-, Y- and Z-axis (pos. and neg.)

Ambient conditions

Ambient temperature (operation)	-60 °C ... 105 °C (max. short-term operating temperature RTI Elec.)
Ambient temperature (storage/transport)	-25 °C ... 60 °C (for a short time, not exceeding 24 h, -60 °C to +70 °C)
Ambient temperature (assembly)	-5 °C ... 70 °C
Ambient temperature (actuation)	-5 °C ... 70 °C
Permissible humidity (storage/transport)	30 % ... 70 %

Standards and regulations

Test disconnect terminal block - RTO 5-T-TC



3049990

<https://www.phoenixcontact.com/us/products/3049990>

Connection in acc. with standard

IEC 60947-7-1

Mounting

Mounting type

NS 35/7,5

NS 35/15

Test disconnect terminal block - RTO 5-T-TC

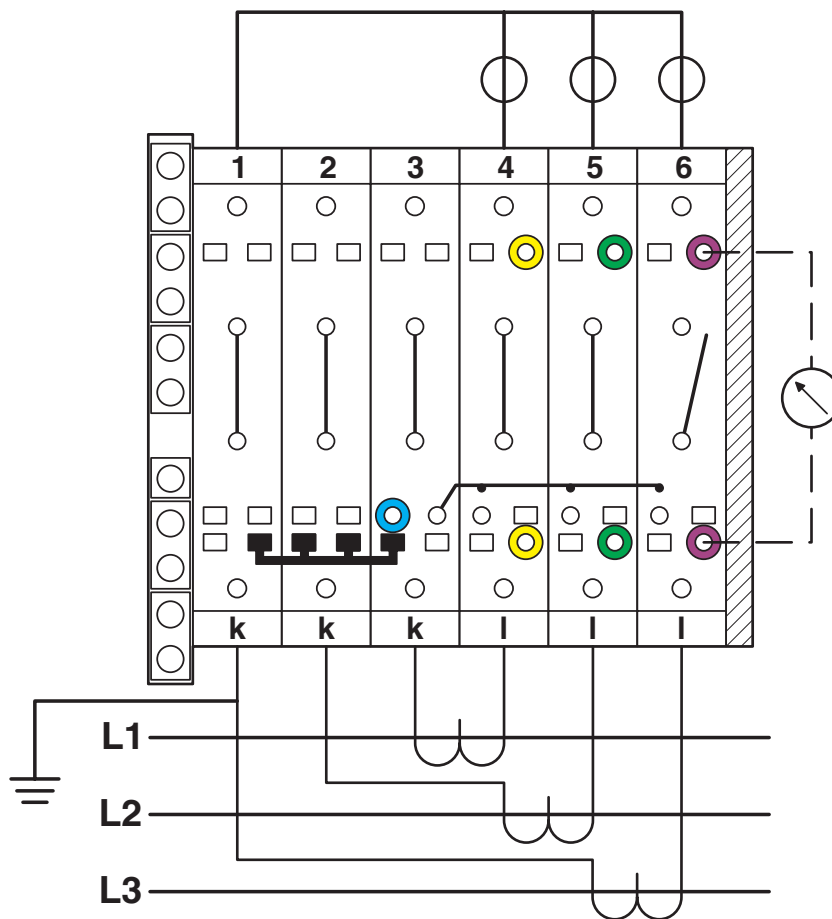
3049990

<https://www.phoenixcontact.com/us/products/3049990>



Drawings

Connection diagram



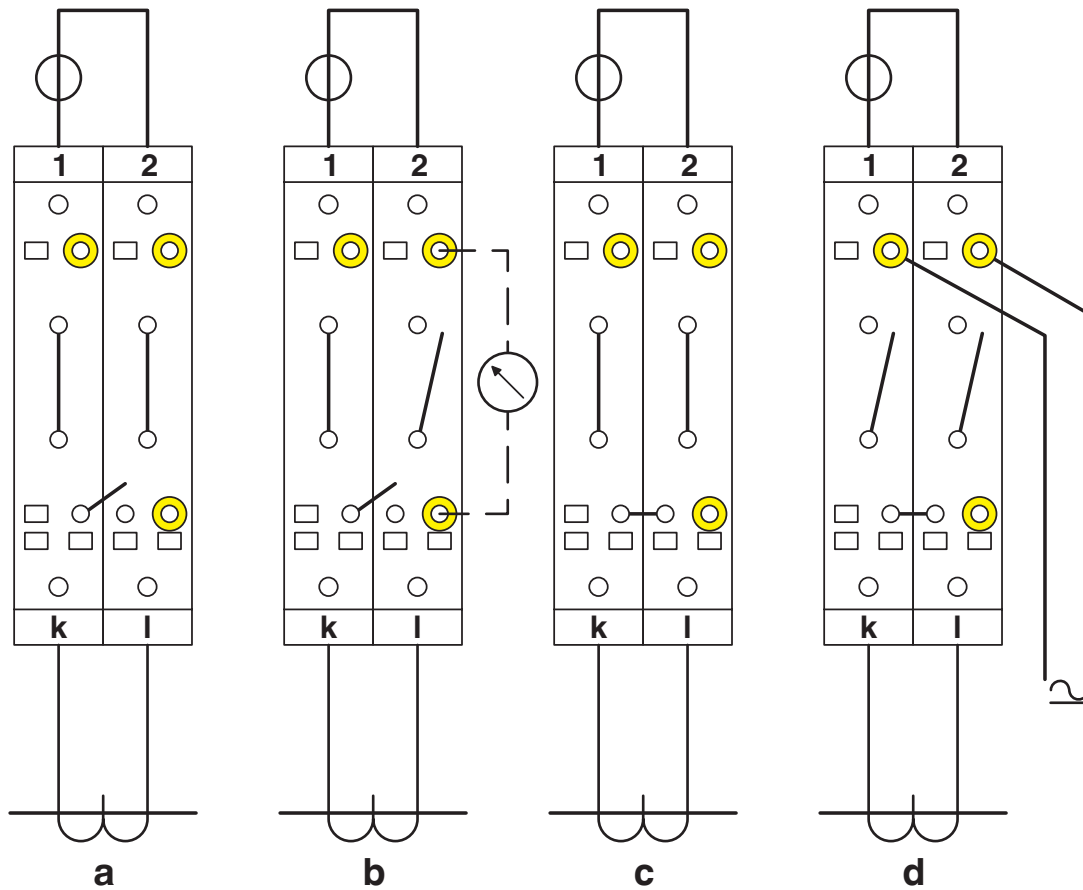
Three-phase linked transducer test set

Test disconnect terminal block - RTO 5-T-TC

3049990

<https://www.phoenixcontact.com/us/products/3049990>

Connection diagram



Simple current transformer test circuit

a = normal operation

b = measured value testing

c = transformer testing

d = relay testing

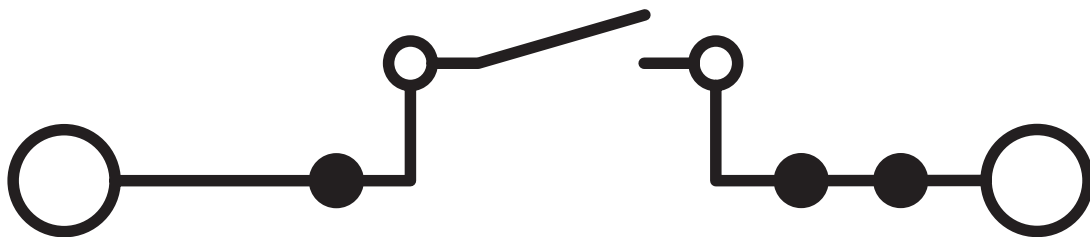
Test disconnect terminal block - RTO 5-T-TC



3049990

<https://www.phoenixcontact.com/us/products/3049990>

Circuit diagram



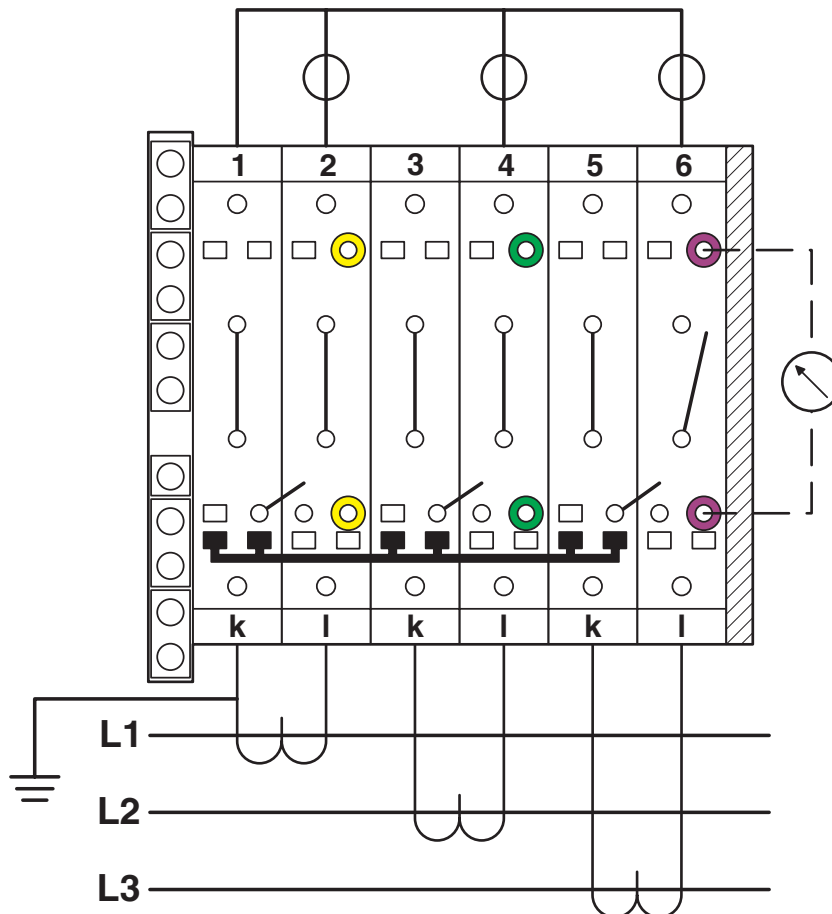
Test disconnect terminal block - RTO 5-T-TC

3049990

<https://www.phoenixcontact.com/us/products/3049990>



Connection diagram



Three-phase transducer test set

Test disconnect terminal block - RTO 5-T-TC



3049990

<https://www.phoenixcontact.com/us/products/3049990>

Approvals



EAC

Approval ID: RU C-DE.A*30.B.01742



cULus Recognized

Approval ID: E60425

	Nominal Voltage U_N	Nominal Current I_N	Cross Section AWG	Cross Section mm^2
Use group B				
	600 V	30 A	NA - NA	-
Use group C				
	600 V	30 A	NA - NA	-



EAC

Approval ID: RU C-DE.BL08.B.00540

Test disconnect terminal block - RTO 5-T-TC



3049990

<https://www.phoenixcontact.com/us/products/3049990>

Classifications

ECLASS

ECLASS-9.0	27141126
ECLASS-10.0.1	27141126
ECLASS-11.0	27141126

ETIM

ETIM 8.0	EC000902
----------	----------

UNSPSC

UNSPSC 21.0	39121400
-------------	----------

Test disconnect terminal block - RTO 5-T-TC



3049990

<https://www.phoenixcontact.com/us/products/3049990>

Environmental Product Compliance

China RoHS	Environmentally Friendly Use Period = 50 years
	For information on hazardous substances, refer to the manufacturer's declaration available under "Downloads"


Test disconnect terminal block - RTO 5-T-TC



3049990

<https://www.phoenixcontact.com/us/products/3049990>

Accessories

 Note: Applying some accessories below might limit this product.


Plug-in bridge

Plug-in bridge - FBS 2-8 - 3030284

<https://www.phoenixcontact.com/us/products/3030284>



Plug-in bridge, pitch: 8.2 mm, color: red

 Max. current carrying capacity: 41 A

Plug-in bridge

Plug-in bridge - FBS 3-8 - 3030297

<https://www.phoenixcontact.com/us/products/3030297>



Plug-in bridge, pitch: 8.2 mm, color: red

 Max. current carrying capacity: 41 A

Test disconnect terminal block - RTO 5-T-TC

3049990

<https://www.phoenixcontact.com/us/products/3049990>

Plug-in bridge

Plug-in bridge - FBS 4-8 - 3030307

<https://www.phoenixcontact.com/us/products/3030307>



Plug-in bridge, pitch: 8.2 mm, color: red

 Max. current carrying capacity: 41 A


Plug-in bridge

Plug-in bridge - FBS 5-8 - 3030310

<https://www.phoenixcontact.com/us/products/3030310>



Plug-in bridge, pitch: 8.2 mm, color: red

 Max. current carrying capacity: 41 A

Test disconnect terminal block - RTO 5-T-TC

3049990

<https://www.phoenixcontact.com/us/products/3049990>

Plug-in bridge

Plug-in bridge - FBS 10-8 - 3030323

<https://www.phoenixcontact.com/us/products/3030323>



Plug-in bridge, pitch: 8.2 mm, color: red

 Max. current carrying capacity: 41 A

Plug-in bridge

Plug-in bridge - FBSR 2-8 - 3033808

<https://www.phoenixcontact.com/us/products/3033808>



Plug-in bridge, pitch: 8.2 mm, color: red

 Max. current carrying capacity: 32 A

Test disconnect terminal block - RTO 5-T-TC

3049990

<https://www.phoenixcontact.com/us/products/3049990>

Plug-in bridge

Plug-in bridge - FBSR 3-8 - 3001597

<https://www.phoenixcontact.com/us/products/3001597>



Plug-in bridge, pitch: 8.2 mm, color: red

 Max. current carrying capacity: 32 A


Plug-in bridge

Plug-in bridge - FBSR 4-8 - 3000585

<https://www.phoenixcontact.com/us/products/3000585>



Plug-in bridge, pitch: 8.2 mm, color: red

 Max. current carrying capacity: 32 A

Test disconnect terminal block - RTO 5-T-TC

3049990

<https://www.phoenixcontact.com/us/products/3049990>

Plug-in bridge

Plug-in bridge - FBSR 5-8 - 3033809

<https://www.phoenixcontact.com/us/products/3033809>



Plug-in bridge, pitch: 8.2 mm, color: red

 Max. current carrying capacity: 32 A


Plug-in bridge

Plug-in bridge - FBSR 10-8 - 3001599

<https://www.phoenixcontact.com/us/products/3001599>



Plug-in bridge, pitch: 8.2 mm, color: red

 Max. current carrying capacity: 32 A

Test disconnect terminal block - RTO 5-T-TC



3049990

<https://www.phoenixcontact.com/us/products/3049990>

Short-circuit connector

Short-circuit connector - FBSRH 2-8 - 3033802

<https://www.phoenixcontact.com/us/products/3033802>



Short-circuit connector, pitch: 8.2 mm, color: red

 Max. current carrying capacity: 32 A


Short-circuit connector

Short-circuit connector - FBSRH 3-8 - 3033803

<https://www.phoenixcontact.com/us/products/3033803>



Short-circuit connector, pitch: 8.2 mm, color: red

 Max. current carrying capacity: 32 A

Test disconnect terminal block - RTO 5-T-TC



3049990

<https://www.phoenixcontact.com/us/products/3049990>


Short-circuit connector

Short-circuit connector - FBSRH 4-8 - 3033804

<https://www.phoenixcontact.com/us/products/3033804>



Short-circuit connector, pitch: 8.2 mm, color: red

 Max. current carrying capacity: 32 A

Plug-in bridge

Plug-in bridge - FBS 2-8 CT - 3033830

<https://www.phoenixcontact.com/us/products/3033830>



Plug-in bridge, pitch: 8.2 mm, color: orange

 Max. current carrying capacity: 41 A

Test disconnect terminal block - RTO 5-T-TC

3049990

<https://www.phoenixcontact.com/us/products/3049990>

Plug-in bridge

Plug-in bridge - FBS 3-8 CT - 3033831

<https://www.phoenixcontact.com/us/products/3033831>



Plug-in bridge, pitch: 8.2 mm, color: orange

 Max. current carrying capacity: 41 A


Plug-in bridge

Plug-in bridge - FBS 4-8 CT - 3033832

<https://www.phoenixcontact.com/us/products/3033832>



Plug-in bridge, pitch: 8.2 mm, color: orange

 Max. current carrying capacity: 41 A

Test disconnect terminal block - RTO 5-T-TC

3049990

<https://www.phoenixcontact.com/us/products/3049990>

Plug-in bridge

Plug-in bridge - FBS 10-8 CT - 3033833

<https://www.phoenixcontact.com/us/products/3033833>



Plug-in bridge, pitch: 8.2 mm, color: orange

 Max. current carrying capacity: 41 A


Plug-in bridge

Plug-in bridge - FBS 2-8 BU - 3032567

<https://www.phoenixcontact.com/us/products/3032567>



Plug-in bridge, pitch: 8.2 mm, color: blue

 Max. current carrying capacity: 41 A

Test disconnect terminal block - RTO 5-T-TC

3049990

<https://www.phoenixcontact.com/us/products/3049990>



Plug-in bridge

Plug-in bridge - FBS 3-8 BU - 3032570

<https://www.phoenixcontact.com/us/products/3032570>



Plug-in bridge, pitch: 8.2 mm, color: blue

 Max. current carrying capacity: 41 A


Plug-in bridge

Plug-in bridge - FBS 4-8 BU - 3032583

<https://www.phoenixcontact.com/us/products/3032583>



Plug-in bridge, pitch: 8.2 mm, color: blue

 Max. current carrying capacity: 41 A

Test disconnect terminal block - RTO 5-T-TC

3049990

<https://www.phoenixcontact.com/us/products/3049990>



Plug-in bridge

Plug-in bridge - FBS 5-8 BU - 3032596

<https://www.phoenixcontact.com/us/products/3032596>



Plug-in bridge, pitch: 8.2 mm, color: blue

 Max. current carrying capacity: 41 A


Plug-in bridge

Plug-in bridge - FBS 6-8 BU - 3032677

<https://www.phoenixcontact.com/us/products/3032677>



Plug-in bridge, pitch: 8.2 mm, color: blue

 Max. current carrying capacity: 41 A

Test disconnect terminal block - RTO 5-T-TC

3049990

<https://www.phoenixcontact.com/us/products/3049990>



Plug-in bridge

Plug-in bridge - FBS 10-8 BU - 3032606

<https://www.phoenixcontact.com/us/products/3032606>



Plug-in bridge, pitch: 8.2 mm, color: blue

 Max. current carrying capacity: 41 A


Switching jumper

Switching jumper - SB-MER 2-8 - 3000587

<https://www.phoenixcontact.com/us/products/3000587>



Switching jumper, pitch: 8.2 mm, color: gray/orange

 Max. current carrying capacity: 25 A

Test disconnect terminal block - RTO 5-T-TC

3049990

<https://www.phoenixcontact.com/us/products/3049990>

Reducing bridge

Reducing bridge - RB UT 6-ST(2,5/4) - 3047264

<https://www.phoenixcontact.com/us/products/3047264>



Reducing bridge, pitch: 9.5 mm, color: red

 Max. current carrying capacity: 35 A


Reducing bridge

Reducing bridge - RB UT 6-(2,5/4) - 3047251

<https://www.phoenixcontact.com/us/products/3047251>



Reducing bridge, pitch: 9.5 mm, color: red

 Max. current carrying capacity: 40 A

Test disconnect terminal block - RTO 5-T-TC



3049990

<https://www.phoenixcontact.com/us/products/3049990>

End cover

End cover - D-RT 5-T - 3049291

<https://www.phoenixcontact.com/us/products/3049291>

End cover, length: 90.4 mm, width: 2.2 mm, height: 42.2 mm, color: gray



Partition plate

Partition plate - TPNS-UK - 0706647

<https://www.phoenixcontact.com/us/products/0706647>

Partition plate, length: 80 mm, width: 2 mm, height: 70 mm, color: gray



Test disconnect terminal block - RTO 5-T-TC



3049990

<https://www.phoenixcontact.com/us/products/3049990>

Path extension

Path extension - BE-RT 3/5 - 3049819

<https://www.phoenixcontact.com/us/products/3049819>



Path extension, color: gray

Tool

Tool - SHN 8 - 1209868

<https://www.phoenixcontact.com/us/products/1209868>



Socket wrench, wrench size 8 mm

Test disconnect terminal block - RTO 5-T-TC



3049990

<https://www.phoenixcontact.com/us/products/3049990>

Switching lock

Switching lock - S-RT 5-T - 3049330

<https://www.phoenixcontact.com/us/products/3049330>

Switching lock, length: 15.65 mm, width: 8.3 mm, height: 26.5 mm, color: white



Separating plate

Separating plate - TS-UT 6-T/SP - 3072821

<https://www.phoenixcontact.com/us/products/3072821>

Separating plate, length: 105.2 mm, width: 1 mm, height: 67.5 mm, color: gray



Test disconnect terminal block - RTO 5-T-TC



3049990

<https://www.phoenixcontact.com/us/products/3049990>

DIN rail perforated

DIN rail perforated - NS 35/ 7,5 PERF 2000MM - 0801733

<https://www.phoenixcontact.com/us/products/0801733>



DIN rail perforated, acc. to EN 60715, material: Steel, galvanized, passivated with a thick layer, Standard profile, color: silver, Pack of 25 (50 m)

DIN rail, unperforated

DIN rail, unperforated - NS 35/ 7,5 UNPERF 2000MM - 0801681

<https://www.phoenixcontact.com/us/products/0801681>



DIN rail, unperforated, acc. to EN 60715, material: Steel, galvanized, passivated with a thick layer, Standard profile, color: silver, Pack of 25 (50 m)

Test disconnect terminal block - RTO 5-T-TC



3049990

<https://www.phoenixcontact.com/us/products/3049990>

DIN rail perforated

DIN rail perforated - NS 35/ 7,5 WH PERF 2000MM - 1204119

<https://www.phoenixcontact.com/us/products/1204119>



DIN rail perforated, acc. to EN 60715, material: Steel, Galvanized, white passivated, Standard profile, color: silver, Pack of 25 (50 m)

DIN rail, unperforated

DIN rail, unperforated - NS 35/ 7,5 WH UNPERF 2000MM-VPE 10 - 1204122

<https://www.phoenixcontact.com/us/products/1204122>



DIN rail, unperforated, acc. to EN 60715, material: Steel, Galvanized, white passivated, Standard profile, color: silver, Pack of 10 (20 m)

Test disconnect terminal block - RTO 5-T-TC



3049990

<https://www.phoenixcontact.com/us/products/3049990>

DIN rail, unperforated

DIN rail, unperforated - NS 35/ 7,5 AL UNPERF 2000MM - 0801704

<https://www.phoenixcontact.com/us/products/0801704>



DIN rail, unperforated, acc. to EN 60715, material: Aluminum, uncoated, Standard profile, color: silver, Pack of 25 (50 m)

DIN rail perforated

DIN rail perforated - NS 35/ 7,5 ZN PERF 2000MM - 1206421

<https://www.phoenixcontact.com/us/products/1206421>



DIN rail perforated, acc. to EN 60715, material: Steel, galvanized, Standard profile, color: silver, Pack of 25 (50 m)

Test disconnect terminal block - RTO 5-T-TC



3049990

<https://www.phoenixcontact.com/us/products/3049990>

DIN rail, unperforated

DIN rail, unperforated - NS 35/ 7,5 ZN UNPERF 2000MM - 1206434

<https://www.phoenixcontact.com/us/products/1206434>



DIN rail, unperforated, acc. to EN 60715, material: Steel, galvanized, Standard profile, color: silver, Pack of 25 (50 m)

DIN rail, unperforated

DIN rail, unperforated - NS 35/ 7,5 CU UNPERF 2000MM-VPE 10 - 0801762

<https://www.phoenixcontact.com/us/products/0801762>



DIN rail, unperforated, acc. to EN 60715, material: Copper, uncoated, Standard profile, color: copper-colored, Pack of 10 (20 m)

Test disconnect terminal block - RTO 5-T-TC



3049990

<https://www.phoenixcontact.com/us/products/3049990>

End cap

End cap - NS 35/ 7,5 CAP - 1206560

<https://www.phoenixcontact.com/us/products/1206560>

DIN rail end piece, for DIN rail NS 35/7.5



DIN rail perforated

DIN rail perforated - NS 35/15 PERF 2000MM - 1201730

<https://www.phoenixcontact.com/us/products/1201730>



DIN rail perforated, similar to EN 60715, material: Steel, galvanized, passivated with a thick layer, Standard profile, color: silver, Pack of 25 (50 m)

Test disconnect terminal block - RTO 5-T-TC



3049990

<https://www.phoenixcontact.com/us/products/3049990>

DIN rail, unperforated

DIN rail, unperforated - NS 35/15 UNPERF 2000MM - 1201714

<https://www.phoenixcontact.com/us/products/1201714>



DIN rail, unperforated, similar to EN 60715, material: Steel, galvanized, passivated with a thick layer, Standard profile, color: silver, Pack of 25 (50 m)

DIN rail perforated

DIN rail perforated - NS 35/15 WH PERF 2000MM - 0806602

<https://www.phoenixcontact.com/us/products/0806602>



DIN rail perforated, similar to EN 60715, material: Steel, Galvanized, white passivated, Standard profile, color: white, Pack of 25 (50 m)

Test disconnect terminal block - RTO 5-T-TC



3049990

<https://www.phoenixcontact.com/us/products/3049990>

DIN rail, unperforated

DIN rail, unperforated - NS 35/15 WH UNPERF 2000MM-VPE 10 - 1204135

<https://www.phoenixcontact.com/us/products/1204135>



DIN rail, unperforated, similar to EN 60715, material: Steel, Galvanized, white passivated, Standard profile, color: silver, Pack of 10 (20 m)

DIN rail, unperforated

DIN rail, unperforated - NS 35/15 AL UNPERF 2000MM - 1201756

<https://www.phoenixcontact.com/us/products/1201756>



DIN rail, unperforated, similar to EN 60715, material: Aluminum, uncoated, Standard profile, color: silver

Test disconnect terminal block - RTO 5-T-TC



3049990

<https://www.phoenixcontact.com/us/products/3049990>

DIN rail perforated

DIN rail perforated - NS 35/15 ZN PERF 2000MM - 1206599

<https://www.phoenixcontact.com/us/products/1206599>



DIN rail perforated, similar to EN 60715, material: Steel, galvanized, Standard profile, color: silver, Pack of 25 (50 m)

DIN rail, unperforated

DIN rail, unperforated - NS 35/15 ZN UNPERF 2000MM - 1206586

<https://www.phoenixcontact.com/us/products/1206586>



DIN rail, unperforated, similar to EN 60715, material: Steel, galvanized, Standard profile, color: silver, Pack of 25 (50 m)

Test disconnect terminal block - RTO 5-T-TC



3049990

<https://www.phoenixcontact.com/us/products/3049990>

DIN rail, unperforated

DIN rail, unperforated - NS 35/15 CU UNPERF 2000MM-VPE 10 - 1201895

<https://www.phoenixcontact.com/us/products/1201895>



DIN rail, unperforated, similar to EN 60715, material: Copper, uncoated, Standard profile, color: copper-colored, Pack of 10 (20 m)

End cap

End cap - NS 35/15 CAP - 1206573

<https://www.phoenixcontact.com/us/products/1206573>

DIN rail end piece, for DIN rail NS 35/15



Test disconnect terminal block - RTO 5-T-TC



3049990

<https://www.phoenixcontact.com/us/products/3049990>

DIN rail, unperforated

DIN rail, unperforated - NS 35/15-2,3 UNPERF 2000MM-VPE 10 - 1201798

<https://www.phoenixcontact.com/us/products/1201798>



DIN rail, unperforated, acc. to EN 60715, material: Steel, galvanized, passivated with a thick layer, Standard profile 2.3 mm, color: silver, Pack of 10 (20 m)

Zack marker strip

Zack marker strip - ZB 16:UNPRINTED - 0827461

<https://www.phoenixcontact.com/us/products/0827461>



Zack marker strip, Strip, white, unlabeled, can be labeled with: PLOTMARK, CMS-P1-PLOTTER, mounting type: snapped, for terminal block width: 16 mm, lettering field size: 16 x 10.5 mm, Number of individual labels: 50

Test disconnect terminal block - RTO 5-T-TC



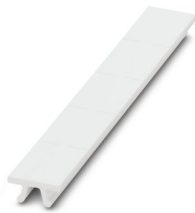
3049990

<https://www.phoenixcontact.com/us/products/3049990>

Zack marker strip

Zack marker strip - ZB 16 CUS - 0827463

<https://www.phoenixcontact.com/us/products/0827463>

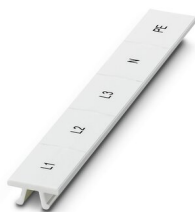


Zack marker strip, can be ordered: Strip, white, labeled according to customer specifications, mounting type: snap into tall marker groove, for terminal block width: 16 mm, lettering field size: 10.5 x 16 mm, Number of individual labels: 5

Zack marker strip

Zack marker strip - ZB 16,LGS:L1-N,PE - 0827462

<https://www.phoenixcontact.com/us/products/0827462>



Zack marker strip, Strip, white, labeled, printed horizontally: L1, L2, L3, N, PE, mounting type: snapped, for terminal block width: 16.3 mm, lettering field size: 10.5 x 16.25 mm, Number of individual labels: 5

Test disconnect terminal block - RTO 5-T-TC



3049990

<https://www.phoenixcontact.com/us/products/3049990>

Marker for terminal blocks

Marker for terminal blocks - UC-TM 16 - 0819217

<https://www.phoenixcontact.com/us/products/0819217>



Marker for terminal blocks, Sheet, white, unlabeled, can be labeled with: BLUEMARK ID COLOR, BLUEMARK ID, BLUEMARK CLED, PLOTMARK, CMS-P1-PLOTTER, mounting type: snapped, for terminal block width: 16 mm, lettering field size: 15.45 x 10.5 mm, Number of individual labels: 32

Marker for terminal blocks

Marker for terminal blocks - UC-TM 16 CUS - 0824621

<https://www.phoenixcontact.com/us/products/0824621>



Marker for terminal blocks, can be ordered: by sheet, white, labeled according to customer specifications, mounting type: snap into tall marker groove, for terminal block width: 16 mm, lettering field size: 15.45 x 10.5 mm, Number of individual labels: 32

Test disconnect terminal block - RTO 5-T-TC



3049990

<https://www.phoenixcontact.com/us/products/3049990>

Marker for terminal blocks

Marker for terminal blocks - UCT-TM 16 - 0829146

<https://www.phoenixcontact.com/us/products/0829146>



Marker for terminal blocks, Sheet, white, unlabeled, can be labeled with: TOPMARK NEO, TOPMARK LASER, BLUEMARK ID COLOR, BLUEMARK ID, BLUEMARK CLED, THERMOMARK PRIME, THERMOMARK CARD 2.0, THERMOMARK CARD, mounting type: snapped, for terminal block width: 16 mm, lettering field size: 14.8 x 9.6 mm, Number of individual labels: 18

Marker for terminal blocks

Marker for terminal blocks - UCT-TM 16 CUS - 0829637

<https://www.phoenixcontact.com/us/products/0829637>



Marker for terminal blocks, can be ordered: by sheet, white, labeled according to customer specifications, mounting type: snap into tall marker groove, for terminal block width: 16 mm, lettering field size: 14.8 x 9.6 mm, Number of individual labels: 18

Test disconnect terminal block - RTO 5-T-TC



3049990

<https://www.phoenixcontact.com/us/products/3049990>

Zack marker strip

Zack marker strip - ZB 16,3:UNPRINTED - 0820222

<https://www.phoenixcontact.com/us/products/0820222>



Zack marker strip, Strip, white, unlabeled, can be labeled with: PLOTMARK, CMS-P1-PLOTTER, mounting type: snapped, for terminal block width: 16.3 mm, lettering field size: 10.5 x 16.25 mm, Number of individual labels: 5

Zack marker strip

Zack marker strip - ZB 16,3 CUS - 0824946

<https://www.phoenixcontact.com/us/products/0824946>



Zack marker strip, can be ordered: Strip, white, labeled according to customer specifications, mounting type: snap into tall marker groove, for terminal block width: 16.3 mm, lettering field size: 10.5 x 16.25 mm, Number of individual labels: 5

Test disconnect terminal block - RTO 5-T-TC



3049990

<https://www.phoenixcontact.com/us/products/3049990>

Test plugs

Test plugs - MPS-MT - 0201744

<https://www.phoenixcontact.com/us/products/0201744>



Test plugs, with solder connection up to 1 mm² conductor cross section, color: gray

Insulating sleeve

Insulating sleeve - MPS-IH WH - 0201663

<https://www.phoenixcontact.com/us/products/0201663>



Insulating sleeve, color: white

Test disconnect terminal block - RTO 5-T-TC



3049990

<https://www.phoenixcontact.com/us/products/3049990>

Insulating sleeve

Insulating sleeve - MPS-IH RD - 0201676

<https://www.phoenixcontact.com/us/products/0201676>

Insulating sleeve, color: red

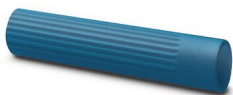


Insulating sleeve

Insulating sleeve - MPS-IH BU - 0201689

<https://www.phoenixcontact.com/us/products/0201689>

Insulating sleeve, color: blue



Test disconnect terminal block - RTO 5-T-TC



3049990

<https://www.phoenixcontact.com/us/products/3049990>

Insulating sleeve

Insulating sleeve - MPS-IH YE - 0201692

<https://www.phoenixcontact.com/us/products/0201692>

Insulating sleeve, color: yellow



Insulating sleeve

Insulating sleeve - MPS-IH GN - 0201702

<https://www.phoenixcontact.com/us/products/0201702>

Insulating sleeve, color: green



Test disconnect terminal block - RTO 5-T-TC



3049990

<https://www.phoenixcontact.com/us/products/3049990>

Insulating sleeve

Insulating sleeve - MPS-IH GY - 0201728

<https://www.phoenixcontact.com/us/products/0201728>

Insulating sleeve, color: gray



Insulating sleeve

Insulating sleeve - MPS-IH BK - 0201731

<https://www.phoenixcontact.com/us/products/0201731>

Insulating sleeve, color: black



Test disconnect terminal block - RTO 5-T-TC



3049990

<https://www.phoenixcontact.com/us/products/3049990>

Test adapter

Test adapter - PAI-4-N GY - 3032871

<https://www.phoenixcontact.com/us/products/3032871>



4 mm test adapter, for terminal blocks with 5.2 mm, 6.2 mm and 8.2 mm pitch

Test plugs

Test plugs - PS-8 - 3031005

<https://www.phoenixcontact.com/us/products/3031005>



Test plugs, Modular test plug, color: red

Test disconnect terminal block - RTO 5-T-TC



3049990

<https://www.phoenixcontact.com/us/products/3049990>

Spacer plate

Spacer plate - DP PS-8 - 3036741

<https://www.phoenixcontact.com/us/products/3036741>



Spacer plate, length: 22.4 mm, width: 8.2 mm, height: 29 mm, number of positions: 1, color: red

Test plugs

Test plugs - PS-8/2,3MM RD - 3048564

<https://www.phoenixcontact.com/us/products/3048564>



Test plugs, color: red

Test disconnect terminal block - RTO 5-T-TC

3049990

<https://www.phoenixcontact.com/us/products/3049990>

End clamp

End clamp - CLIPFIX 35 - 3022218

<https://www.phoenixcontact.com/us/products/3022218>



Quick mounting end clamp for NS 35/7,5 DIN rail or NS 35/15 DIN rail, with marking option, width: 9.5 mm, color: gray

End clamp

End clamp - CLIPFIX 35-5 - 3022276

<https://www.phoenixcontact.com/us/products/3022276>



Quick mounting end clamp for NS 35/7,5 DIN rail or NS 35/15 DIN rail, with marking option, with parking option for FBS...5, FBS...6, KSS 5, KSS 6, width: 5.15 mm, color: gray

Test disconnect terminal block - RTO 5-T-TC

3049990

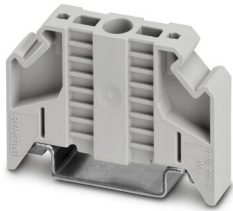
<https://www.phoenixcontact.com/us/products/3049990>

End clamp

End clamp - E/NS 35 N - 0800886

<https://www.phoenixcontact.com/us/products/0800886>

End clamp, width: 9.5 mm, color: gray

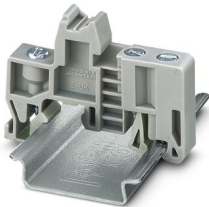


End clamp

End clamp - E/UK - 1201442

<https://www.phoenixcontact.com/us/products/1201442>

End clamp, material: PA, color: gray, Mounting on a DIN rail NS 32 or NS 35



Test disconnect terminal block - RTO 5-T-TC



3049990

<https://www.phoenixcontact.com/us/products/3049990>

End clamp

End clamp - E/UK 1 - 1201413

<https://www.phoenixcontact.com/us/products/1201413>



End clamps, for supporting the ends of double-level and three-level terminal blocks, width: 10 mm, color: gray

Phoenix Contact 2022 © - all rights reserved

<https://www.phoenixcontact.com>

Phoenix Contact USA
586 Fulling Mill Road
Middletown, PA 17057, United States
(+717) 944-1300
info@phoenixcon.com