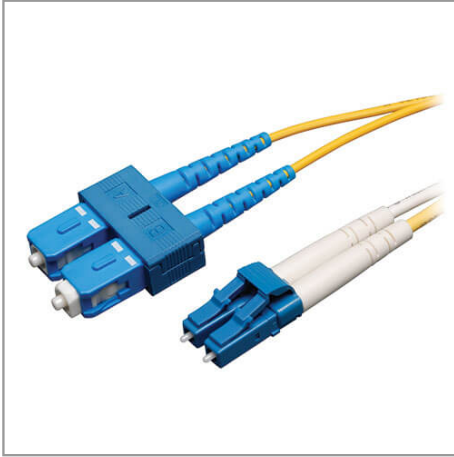


Duplex Singlemode 9/125 Fiber Patch Cable (LC/SC), 50 m (164 ft.)

MODEL NUMBER: N366-50M



Premium singlemode fiber optic cabling transmits fast, clear data signals through your LAN with twice the bandwidth throughput of multimode cable.

Features

Fast, Clear Data Transmission Through Your LAN

- Twice the bandwidth throughput of multimode cable
- Ideal for network equipment that requires singlemode fiber optic patch cables
- Attenuation loss meets or exceeds latest industry standards

Superior Construction for Error-Free Signal Transfer

- 9/125 duplex (zipcord) fiber made from glass
- Sturdy LC and SC male connectors meet stringent insertion loss standards
- Beveled edge on glass ends for easy plug insertion
- Yellow-colored for identification as singlemode

Specifications

| OVERVIEW | |
|--------------------|-------------------|
| UPC Code | 037332194985 |
| Technology | Singlemode |
| Optical Mode | OS2 |
| PHYSICAL | |
| Cable Jacket Color | Yellow |
| Connector Color | Blue; Blue; White |

Highlights

- Attenuation loss meets or exceeds latest industry standards
- 9/125 duplex (zipcord) fiber made from glass
- LC and SC male connectors meet insertion loss standards
- FDDI- and OFNR-rated PVC jacket
- Beveled edge on glass ends for easy plug insertion

System Requirements

- Fiber optic hardware or NIC card requiring singlemode duplex cable with LC/SC connectors

Package Includes

- N366-50M Duplex Singlemode 9/125 Fiber Patch Cable, 50 m

| | |
|--------------------------------------|---|
| Cable Jacket Material | LSZH |
| Cable Jacket Rating | OFNR |
| Clad Diameter (microns) | 125 |
| Core Diameter (microns) | 9 |
| Number of Fibers | 2 |
| Cable Length (ft.) | 164 |
| Cable Length (m) | 50.00 |
| Cable Length (in.) | 1968.5 |
| Minimum Bend Radius | 20MM (Dynamic); 10MM (Static) |
| Shipping Dimensions (hwd / in.) | 10.50 x 12.00 x 0.50 |
| Shipping Dimensions (hwd / cm) | 26.67 x 30.48 x 1.27 |
| Shipping Weight (lbs.) | 0.85 |
| Shipping Weight (kg) | 0.39 |
| ENVIRONMENTAL | |
| Operating Temperature Range | -4 to 140 °F (-20 to 60 °C) |
| Storage Temperature Range | -4 to 140 °F (-20 to 60 °C) |
| Operating Humidity Range | 5% to 85% RH, Non-Condensing |
| Storage Humidity Range | 35% to 65% RH, Non-Condensing |
| COMMUNICATIONS | |
| Network Compatibility | 1 Gbps (Gigabit); 10 Gbps; 25 Gbps; 40 Gbps; 100 Gbps; 400 Gbps |
| Attenuation @ 1310NM | 0.36dB/Km |
| Attenuation @ 1550NM | 0.22dB/Km |
| Insertion Loss | 0.30dB |
| CONNECTIONS | |
| Side A - Connector 1 | LC DUPLEX (MALE) |
| Side B - Connector 1 | SC DUPLEX (MALE) |
| Endface Polish | UPC |
| FEATURES & SPECIFICATIONS | |
| Push/Pull Tabs | No |
| Breakout | No |
| Trunk | No |
| STANDARDS & COMPLIANCE | |

| | |
|-------------------------------------|---------------------------|
| Product Compliance | RoHS; REACH |
| WARRANTY & SUPPORT | |
| Product Warranty Period (Worldwide) | Lifetime limited warranty |