

POSITIONS/ CONTACTS	A MM	B MM
04/04	3.81	5.08
05/05	5.08	6.35
06/06	6.35	7.62
07/07	7.62	8.89
08/08	8.89	10.16
09/09	10.16	11.43
10/10	11.43	12.70
11/11	12.70	13.97
12/12	13.97	15.24
13/13	15.24	16.51
14/14	16.51	17.78
15/15	17.78	19.05
16/16	19.05	20.32
17/17	20.32	21.59
18/18	21.59	22.86
19/19	22.86	24.13
20/20	24.13	25.40
21/21	25.40	26.67
22/22	26.67	27.94
23/23	27.94	29.21
24/24	29.21	30.48
25/25	30.48	31.75
26/26	31.75	33.02
27/27	33.02	34.29
28/28	34.29	35.56
29/29	35.56	36.83
30/30	36.83	38.10
31/31	38.10	39.37
32/32	39.37	40.64
33/33	40.64	41.91
34/34	41.91	43.18
35/35	43.18	44.45
36/36	44.45	45.72
37/37	45.72	46.99
38/38	46.99	48.26
39/39	48.26	49.53
40/40	49.53	50.80
41/41	50.80	52.07
42/42	52.07	53.34
43/43	53.34	54.61
44/44	54.61	55.88

## PART NUMBER CODING

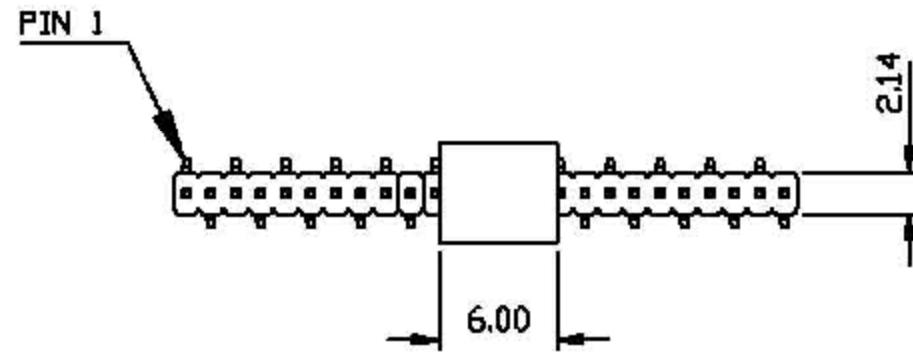
**GRP\_1VWT\_-M81RC**

### MOUNTING STYLES

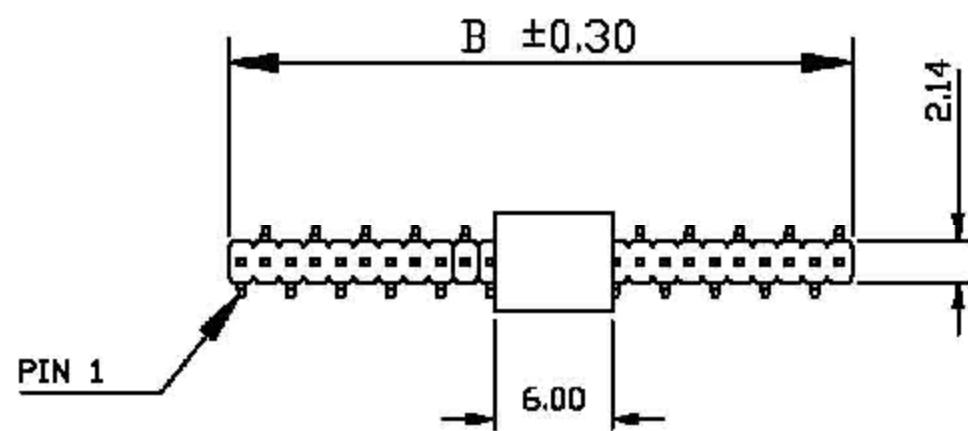
- C - SMT, SINGLE ROW MALE, PIN 1 (STANDARD)
- D - SMT, SINGLE ROW MALE, PIN 1 (OPPOSITE BEND)

### NUMBER OF POSITIONS

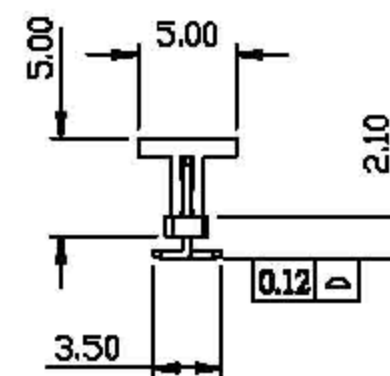
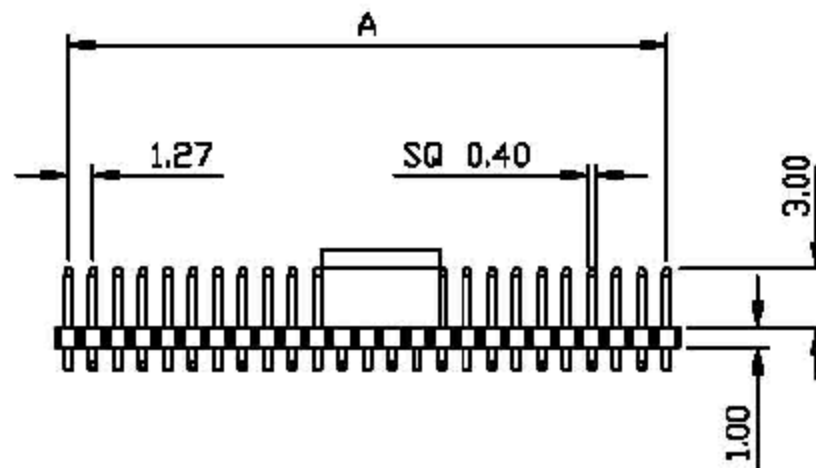
(CONTACTS PER ROW, 04 THRU 44)



**GRP\_1VWTC-M81RC**  
(STANDARD)

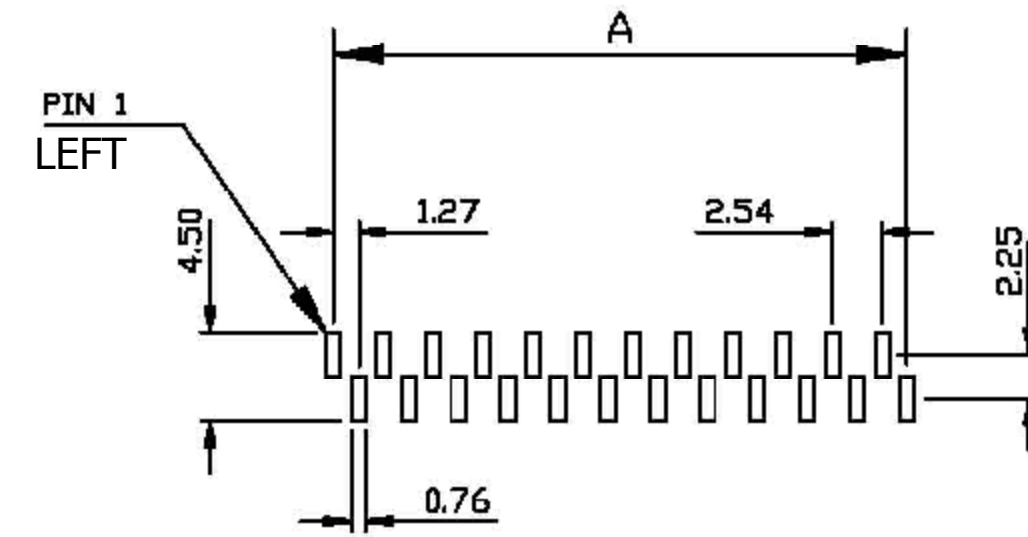
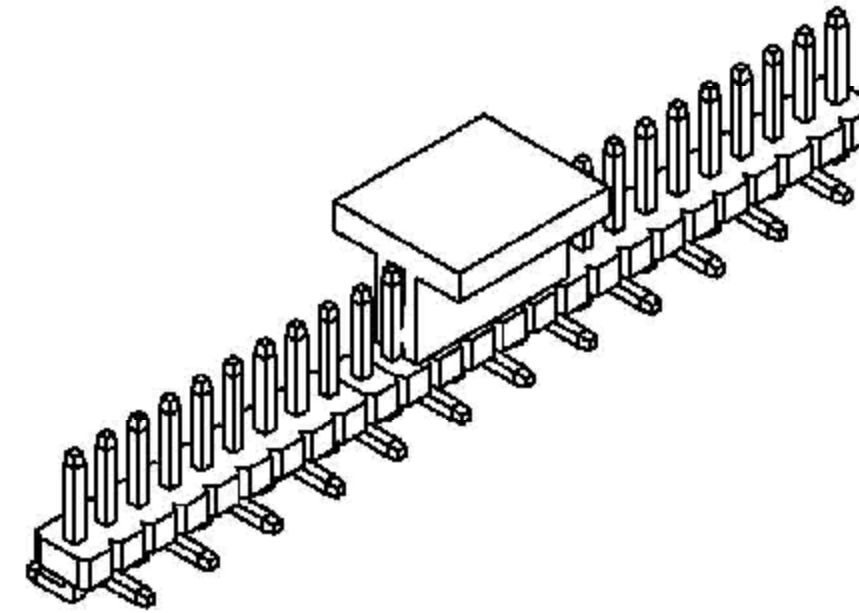


**GRP\_1VWTD-M81RC**  
(OPPOSITE BEND, ONLY APPLICABLE ON EVEN PIN COUNTS)

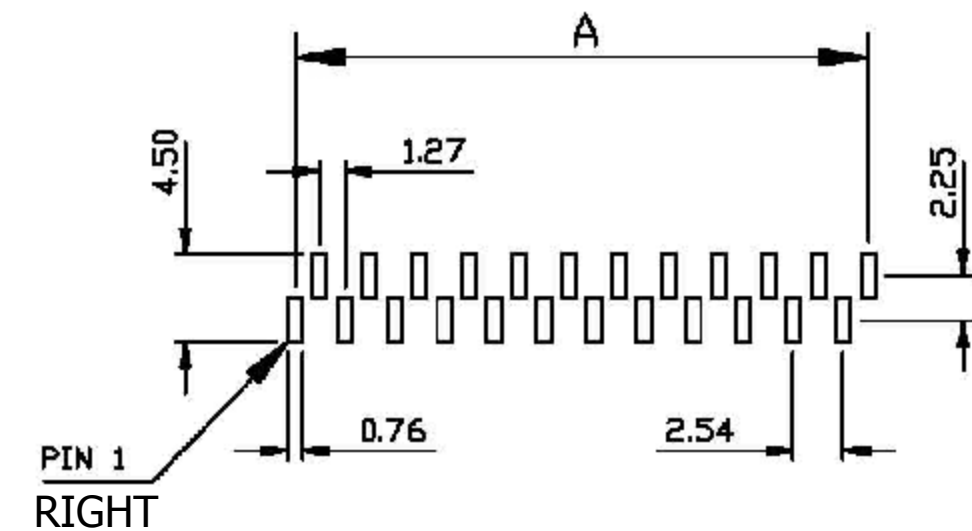


REVISIONS				
REV.	ECO. NO	DESCRIPTION	DATE	BY
A0		PRELIMINARY	08/20/2009	JH
A1		ADD TABLE & ISO VIEW, UPDATE THREE VIEWS & NOTES.	12/03/2010	LH

# PRELIMINARY



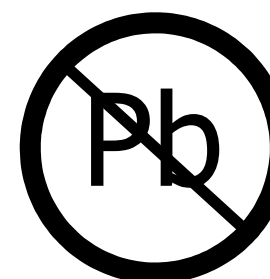
RECOMMENDED PCB LAYOUT  
**GRP\_1VWTC-M81RC**



RECOMMENDED PCB LAYOUT  
**GRP\_1VWTD-M81RC**

### NOTES:

- INSULATOR MATERIAL: NYLON 9T, UL 94V-0, BLACK.
- CONTACT MATERIAL: BRASS.
- CONTACT PLATING: GOLD FLASH OVERALL.
- CURRENT RATING: 1 AMP PER CONTACT.
- INSULATOR RESISTANCE: 5000 MEGA OHMS MIN.
- CONTACT RESISTANCE: 20 MILLIOHMS MAX.
- DIELECTRIC WITHSTANDING: 500V AC.
- OPERATING TEMPERATURE: -40° C TO +105° C.
- PROCESSING TEMP.: 230° C FOR 60 SECS MAX.  
(260° C FOR 10 SECS MAX.)
- MODIFICATION: WITH PLASTIC PICK AND PLACE CAP IN TAPE AND REEL.



RoHS COMPLIANT

UNLESS OTHERWISE SPECIFIED:  
DIMENSIONS ARE IN MM  
TOLERANCES:  
ANGULAR: ± 30'  
X.X=± .30  
X.XX=± .20  
X.XXX=± .100

INTERPRET DIMENSIONS AND GEOMETRIC TOLERANCING PER: ASME Y14.5M-2009

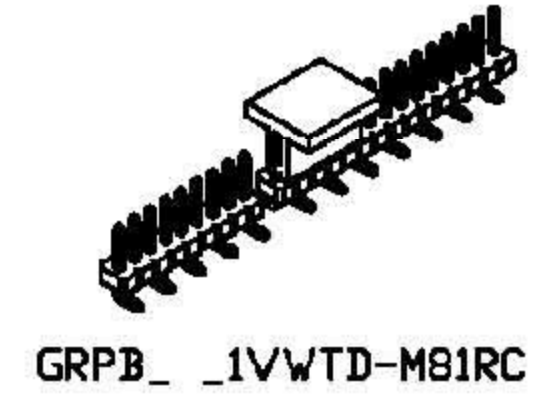
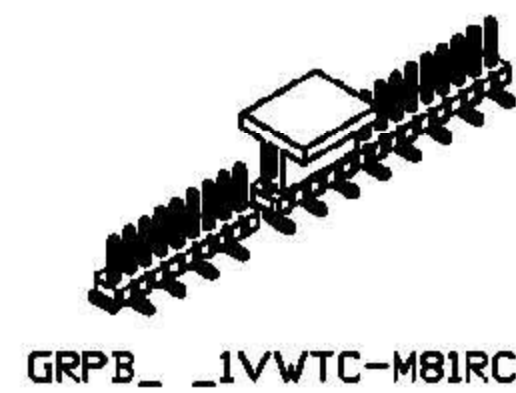
DATE	NAME
08/20/2009	JH

THE INFORMATION HEREIN CONTAINS PROPRIETARY INFORMATION OF SULLINS ELECTRONICS AND IS NOT TO BE REPRODUCED, USED OR DISCLOSED TO OTHERS FOR ANY PURPOSE EXCEPT AS SPECIFICALLY AUTHORIZED IN WRITING BY AN OFFICER OF SULLINS ELECTRONICS.

<b>SULLINS</b> CONNECTOR SOLUTIONS	
DESCRIPTION HEADER MALE, 1.27mm CC, 1 ROW, SMT T&R	
PART NUMBER <b>GRP_1VWT_-M81RC</b>	
SIZE <b>C</b>	DWG. NO. <b>TP00090</b>
REV <b>A1</b>	
SCALE: 2:1	
SHEET 1 OF 2	

NOTE:

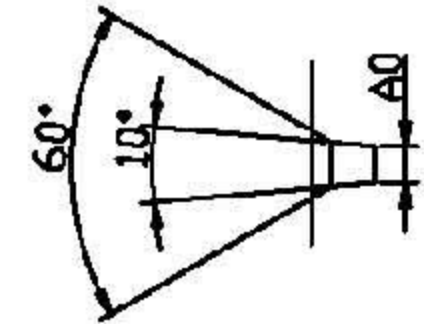
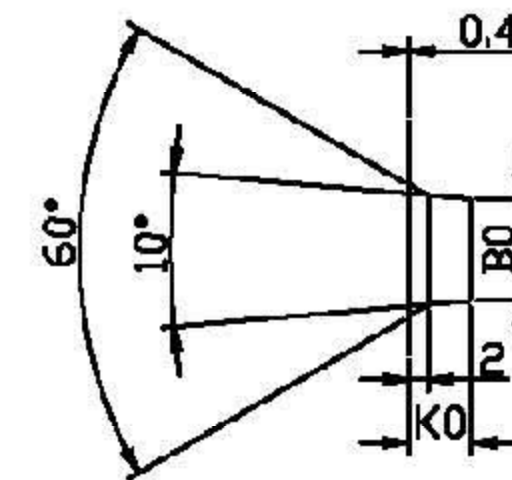
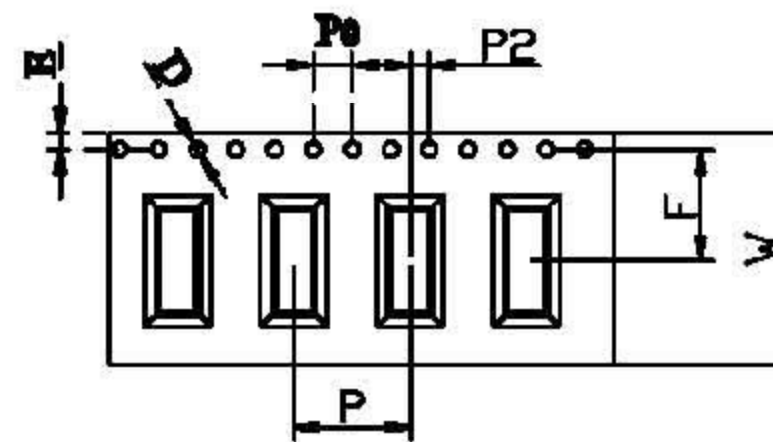
1. CUMULATIVE PITCH TOLERANCE FOR 10 SPROCKET HOLES IS  $\pm 0.20\text{mm}$ .
2. CARRIER CAMBER IS 1mm IN 100mm.
3. A0 AND B0 MEASURED ON A PLANE 0.3mm ABOVE THE BOTTOM OF THE POCKET.
4. K0 MEASURED FROM A PLANE ON THE INSIDE BOTTOM OF THE POCKET TO THE TOP SURFACE OF THE CARRIER.
5. PACKING CONFORMS EIA-481-2 STANDARDS.
6. ONE  $\phi 13"$  REEL= 11.5 METER (OVERALL LENGTH OF TAPE), 900 PIECES.



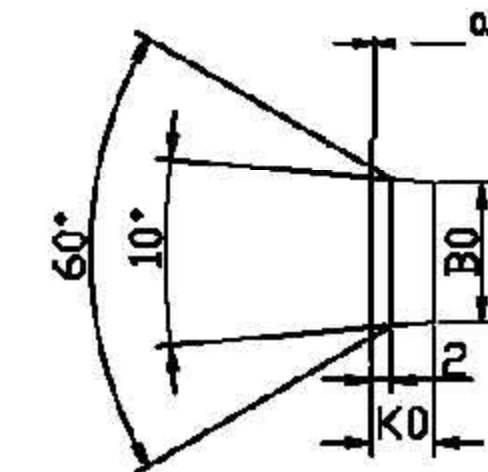
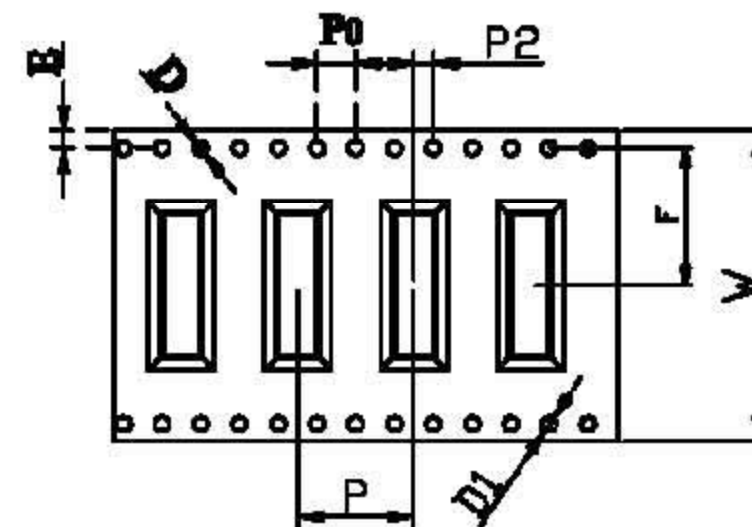
MATERIAL: P.S 0.4 BLACK

ITEM	A0	K0	P	E	D	D1	P0	P2
DIM	3.8 <sup>+0.1</sup> <sub>-0.1</sub>	6.4 <sup>+0.1</sup> <sub>-0.1</sub>	12 <sup>+0.1</sup> <sub>-0.1</sub>	1.75 <sup>+0.1</sup> <sub>-0.1</sub>	1.5 <sup>+0.1</sup> <sub>-0.0</sub>	1.5 <sup>+0.25</sup> <sub>-0.0</sub>	4.0 <sup>+0.1</sup> <sub>-0.1</sub>	2.0 <sup>+0.1</sup> <sub>-0.1</sub>

CIRCUITS	W	B0	F	CIRCUITS	W	B0	F
04 pin	16	6.3	7.5	26 pin	72	32.1	34.2
05 pin	16	6.7	7.5	28 pin	72	33.3	34.2
06 pin	24	8.0	11.5	27 pin	72	34.6	34.2
07 pin	24	9.2	11.5	28 pin	72	35.9	34.2
08 pin	24	10.5	11.5	29 pin	72	37.1	34.2
09 pin	24	11.9	11.5	30 pin	88	38.4	42.2
10 pin	24	13.1	11.5	31 pin	88	39.7	42.2
11 pin	32	14.4	14.2	32 pin	88	40.9	42.2
12 pin	32	15.7	14.2	33 pin	88	42.2	42.2
13 pin	32	17.0	14.2	34 pin	88	43.5	42.2
14 pin	32	18.2	14.2	35 pin	88	44.8	42.2
15 pin	44	19.4	20.2	36 pin	88	46.0	42.2
16 pin	44	20.8	20.2	37 pin	88	47.3	42.2
17 pin	44	22.0	20.2	38 pin	88	48.5	42.2
18 pin	44	23.3	20.2	39 pin	88	49.8	42.2
19 pin	44	24.6	20.2	40 pin	88	51.1	42.2
20 pin	44	25.7	20.2	41 pin	88	52.4	42.2
21 pin	44	27.0	20.2	42 pin	88	53.6	42.2
22 pin	56	28.3	26.2	43 pin	88	54.9	42.2
23 pin	72	29.5	34.2	44 pin	88	56.2	42.2
24 pin	72	30.8	34.2				

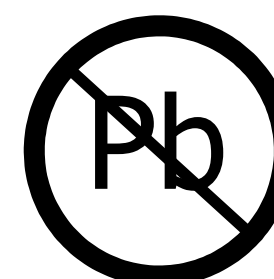
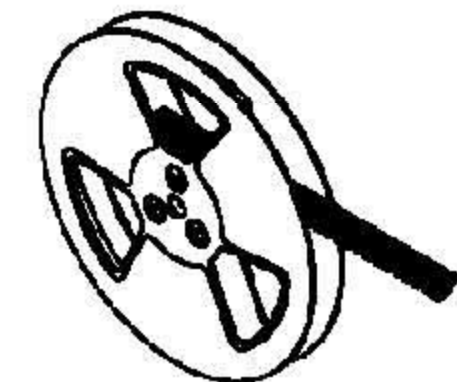
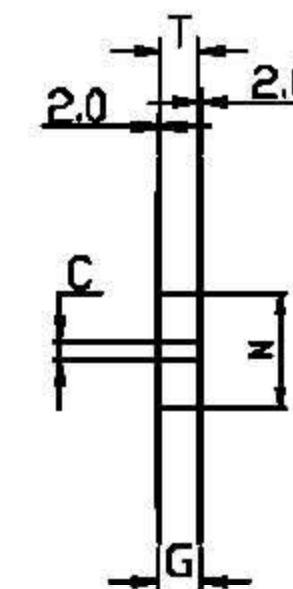
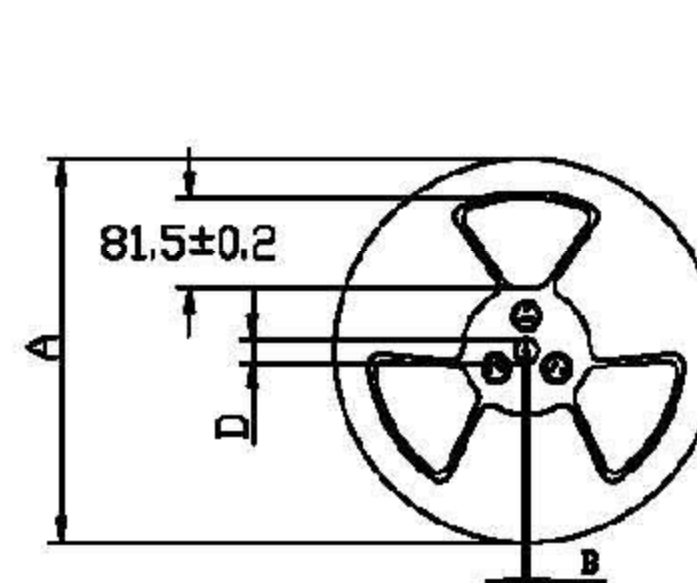


TAPE TYPE 1: FOR POSITION NUMBERS 04 THRU 10 (TAPE WIDTH < 32 mm)



TAPE TYPE 2: FOR POSITION NUMBERS 11 AND ABOVE (TAPE WIDTH ≥ 32 mm)

Dimension							Carrier Tape
A	B±0.5	C±0.2	D±1.0	N±1.0	T±0.1	G±0.1	W
330	2.2	13	20.2	180	8.5	13.1	8
330	2.2	13	20.2	180	12.5	17.1	12
330	2.2	13	20.2	180	17	21.1	16
330	2.2	13	20.2	180	24.5	29.1	24
330	2.2	13	20.2	180	32.5	37.0	32
330	2.2	13	20.2	180	44.5	49.1	44
330	2.2	13	20.2	180	56.5	61.1	56
330	2.2	13	20.2	180	72.5	77.1	72
330	2.2	13	20.2	180	88.5	93.1	88

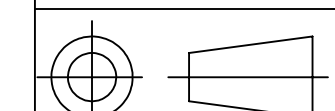


RoHS COMPLIANT

UNLESS OTHERWISE SPECIFIED:  
 DIMENSIONS ARE IN MM  
 TOLERANCES:  
 ANGULAR:  $\pm 30^\circ$   
 .X =  $\pm .30$   
 .XX =  $\pm .20$   
 .XXX =  $\pm .100$

INTERPRET DIMENSIONS AND GEOMETRIC TOLERANCING PER: ASME Y14.5M-2009

DATE: 08/20/2009  
 NAME: JH  
 DRAWN: JH  
 THE INFORMATION HEREIN CONTAINS PROPRIETARY INFORMATION OF SULLINS ELECTRONICS AND IS NOT TO BE REPRODUCED, USED OR DISCLOSED TO OTHERS FOR ANY PURPOSE EXCEPT AS SPECIFICALLY AUTHORIZED IN WRITING BY AN OFFICER OF SULLINS ELECTRONICS.



DESCRIPTION HEADER MALE, 1.27mm CC, 1 ROW, SMT T&R	
PART NUMBER <b>GRP<sub>B</sub>_1VWT_-M81RC</b>	
SIZE <b>C</b>	DWG. NO. <b>TP00090</b>
REV <b>A1</b>	
SCALE: 2:1	
SHEET 2 OF 2	