

Battery Holders

Surface Mounting Technology (SMT)




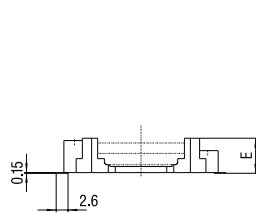
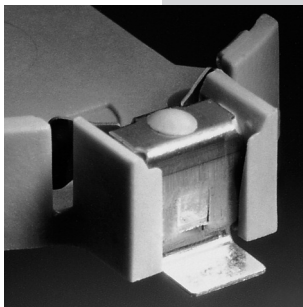
Horizontal mounting

Features

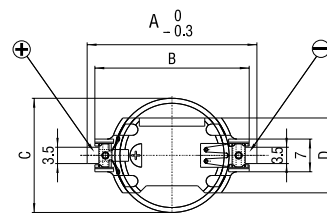
- Easy and fast replacement of the battery
- Designed for automatic pick&place mounting
- Safe retention of coin cell
- Automated battery mounting possible
- Clear separation of connections
- Protection against short-circuits
- Protection against inverse polarity (polarized)
- Protection against leak currents
- Robust design
- Suitable for reflow-soldering

Specifications

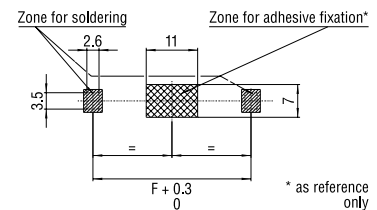
- Holder material: heat-resistant, glass fibre filled LCP
- Flammability rating UL 94 V-0
- Battery contacts: spring stainless steel AISI 301, nickel-plated throughout. Solder area tin-plated throughout, min. thickness 5 μm .
- Contact resistance between contacts and the cell is less than 100 $\text{m}\Omega$ (measured through AC 1kHz; depending on the case material of the cell).
-  UL recognition, file E218732
- Operating temperature range: $-40/+100^{\circ}\text{C}$



side view



top view



layout top view

Dimensions

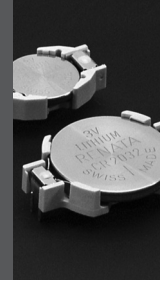
| Model | For use with Renata cell | Dimensions (mm) | | | | | | Weight (g) | Part.No.* |
|--------------|--------------------------|-----------------|------|------|------|------|------|------------|-----------|
| | | A | B | C | D | E | F | | |
| SMTU357-LF | 357 (SR44W) | 23.3 | 19.9 | 11.6 | 12.0 | 7.55 | 20.7 | 0.85 | 701132 |
| SMTU1220-LF | CR1220 | 23.7 | 20.3 | 12.5 | 12.7 | 4.8 | 21.1 | 0.80 | 701114 |
| SMTU1225-LF | CR1225 | 23.7 | 20.3 | 12.5 | 12.7 | 4.8 | 21.1 | 0.70 | 701115 |
| SMTU1632-LF | CR1632 | 27.7 | 24.3 | 16.0 | 14.5 | 5.4 | 25.1 | 0.80 | 701130 |
| SMTU2032-LF | CR2032 | 32.0 | 28.5 | 20.0 | 16.1 | 5.4 | 29.4 | 0.95 | 701116 |
| SMTU2430-LF | CR2430 | 36.4 | 33.0 | 24.5 | 16.1 | 4.9 | 33.8 | 1.05 | 701117 |
| SMTU2450N-LF | CR2450N ¹⁾ | 36.4 | 33.0 | 24.5 | 16.1 | 7.5 | 33.8 | 1.45 | 701118 |
| SMTU2477N-LF | CR2477N | 36.4 | 33.0 | 24.5 | 16.1 | 10.3 | 33.8 | 1.65 | 701119 |
| SM2X2016-LF | CR2016 | 32.0 | 28.5 | 20.0 | 16.1 | 5.4 | 29.4 | 0.95 | 701113 |

*Packaging: Industrial Bulk (B-Trays)

1) Not suitable for CR2450HT

Battery Holders

Through-hole mounting




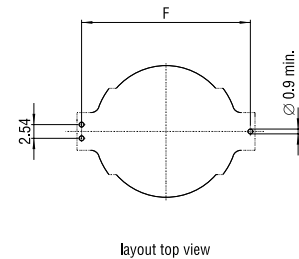
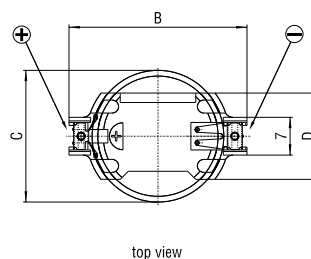
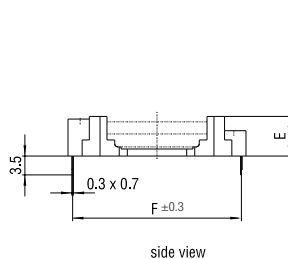
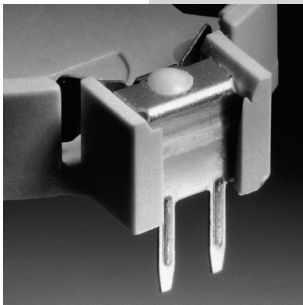
Horizontal mounting

Features

- Easy and fast replacement of the battery
- Designed for automatic pick&place mounting
- Safe retention of coin cell
- Automated battery mounting possible
- Clear separation of connections
- Protection against short-circuits
- Protection against inverse polarity (polarized)
- Protection against leak currents
- Robust design
- Suitable for wave-soldering

Specifications

- Holder material: heat-resistant, glass fibre filled LCP
- Flammability rating UL 94 V-0
- Battery contacts: spring stainless steel AISI 301, nickel-plated throughout. Solder area tin-plated throughout, min. thickness 5 μm .
- Contact resistance between contacts and the cell is less than 100 $\text{m}\Omega$ (measured through AC 1kHz; depending on the case material of the cell).
-  UL recognition, file E218732
- Operating temperature range: $-40/+100^{\circ}\text{C}$



Dimensions

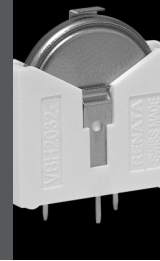
| Model | For use with Renata cell | Dimensions (mm) | | | | | Weight (g) | Part.No.* |
|------------|--------------------------|-----------------|------|------|------|-------|------------|-----------|
| | | B | C | D | E | F | | |
| HU357-LF | 357 (SR44W) | 19.9 | 11.6 | 12.0 | 7.4 | 18.65 | 0.84 | 701133 |
| HU1225-LF | CR1225 | 20.3 | 12.5 | 12.7 | 4.5 | 19.1 | 0.70 | 701105 |
| HU1632-LF | CR1632 | 24.3 | 16.0 | 14.5 | 5.2 | 23.0 | 0.80 | 701131 |
| HU2032-LF | CR2032 | 28.5 | 20.0 | 16.1 | 5.2 | 27.2 | 0.95 | 701106 |
| HU2430-LF | CR2430 | 33.0 | 24.5 | 16.1 | 4.7 | 31.7 | 1.05 | 701107 |
| HU2450N-LF | CR2450N ¹⁾ | 33.0 | 24.5 | 16.1 | 7.3 | 31.75 | 1.45 | 701108 |
| HU2477N-LF | CR2477N | 33.0 | 24.5 | 16.1 | 10.1 | 31.8 | 1.65 | 701109 |

*Packaging: Industrial Bulk (IB-Trays)

1) Not suitable for CR2450HT

Battery Holders

Through-hole mounting




Vertical mounting

VBH2032-1 - Vertical battery holder for Renata coin cell CR2032 / CR2032MFR

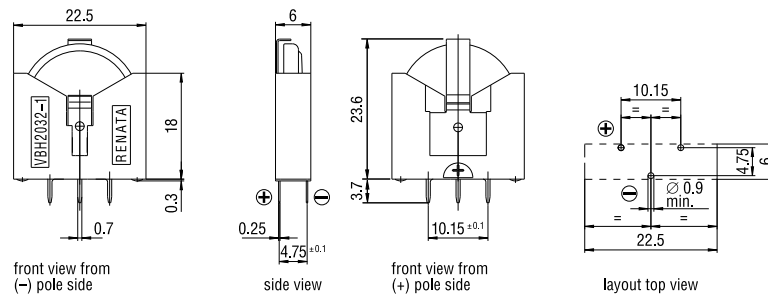
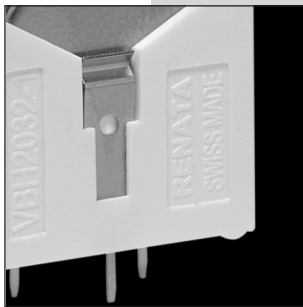
Features

- Small PCB footprint
- Easy and fast replacement of the battery
- Safe retention of coin cell
- Protection against short-circuits
- Protection against inverse polarity (polarized)
- Protection against leak currents
- Robust design
- Suitable for wave-soldering

Specifications

- Holder material: polyamide
- Flammability rating UL 94 V-0
- Battery contacts: spring stainless steel AISI 301, nickel-plated throughout.
-  UL recognition, file E218732
- Operating temperature range: -40/+85°C

Dimensions (mm)



| Model | For use with Renata cell | Weight (g) | Part. No.* |
|-----------|--------------------------|------------|------------|
| VBH2032-1 | CR2032 | 1.6 | 700579 |

*Packaging: Industrial Bulk (IB-Trays)

Battery Holders

Through-hole mounting with positioning pins



Battery holders for CR2450N or CR2477N
Vertical and horizontal versions

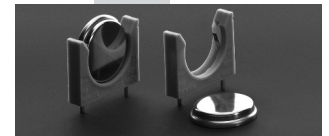
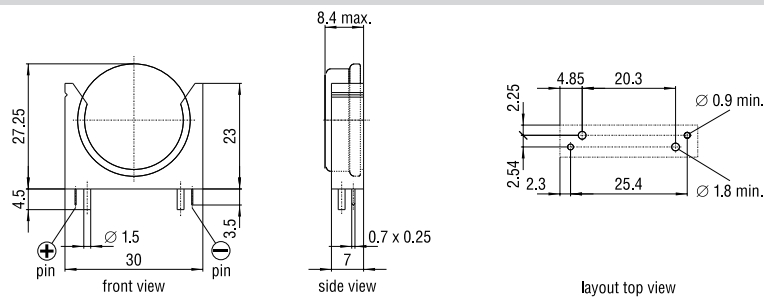
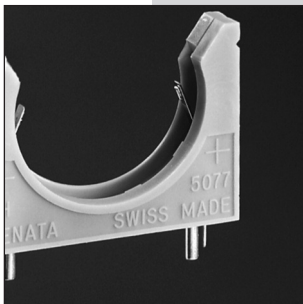
Features

- Easy and fast replacement of the battery
- Snap-on fixing for coin cells
- Safe retention of coin cell
- Automated battery mounting possible
- Clear separation of connections
- Protection against short-circuits
- Protection against inverse polarity
- Protection against leak currents
- Robust design
- Easy and safe PCB mounting due to additional positioning pins
- Suitable for wave-soldering

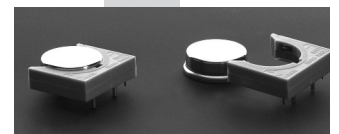
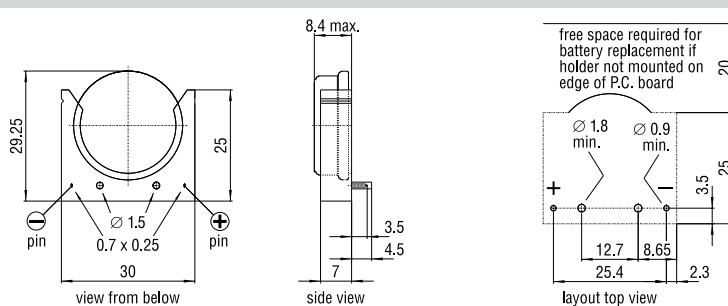
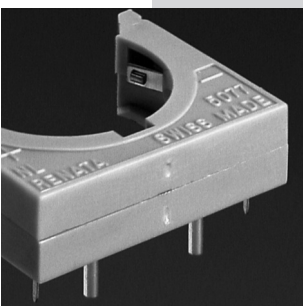
Specifications

- Holder material: polyamide
- Flammability rating UL 94 V-2
- Battery contacts: Nickel 99.6 DIN 17740
- Contact resistance between contacts and the cell is less than 100 mΩ (measured through AC 1kHz).
- Solder and positioning pins tin plated through-out, min. thickness 5 μm.
- UL recognition, file E218732
- Operating temperature range: -40/+85°C

NH5077-LF Vertical version



NL5077-LF Horizontal version



| Model | For use with Renata cell | Weight (g) | Part.No.* |
|-----------|---------------------------------|------------|-----------|
| NH5077-LF | CR2450N ¹⁾ , CR2477N | 2.4 | 701111 |
| NL5077-LF | CR2450N ¹⁾ , CR2477N | 2.9 | 701112 |

*Packaging: Industrial Bulk (IB-Trays)

1) Not suitable for CR2450HT

Battery Holders

Packaging options

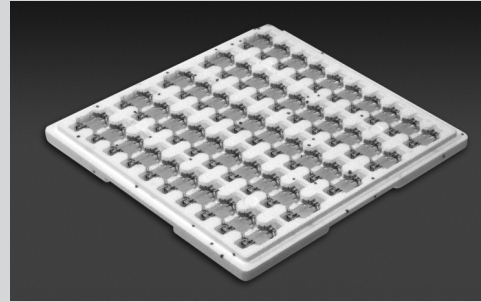
Battery holders can be supplied in different packaging

Industrial Bulk multi-cell trays

Packaging Code: **IB**

Industrial Bulk packaging is the standard packaging for manufacturers.

The number of battery holders per tray depends on the respective model. So does the number of trays per shrink pack.



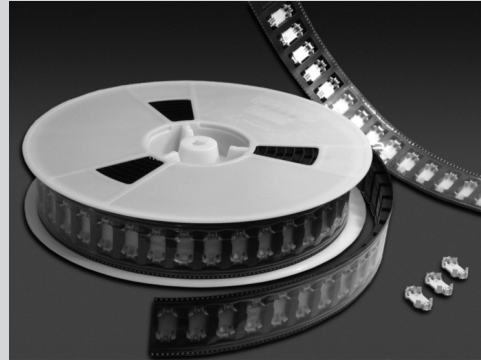
Tape&Reel packaging

Packaging Code: **TR**

For SMT-battery holders there is a Tape&Reel packaging solution available.

Tape&Reel packaging is ideal for high-speed, automated manufacturing lines.

The number of battery holders per reel depends on the respective model.



Quantity per reel:

| Model | Quantity per Reel | Part.No.* |
|-----------------|-------------------|-----------|
| SMTU1225-LF TR | 750 pieces | 701230 |
| SMTU1632-LF TR | 520 pieces | 701231 |
| SMTU2032-LF TR | 485 pieces | 701232 |
| SMTU2430-LF TR | 490 pieces | 701233 |
| SMTU2450N-LF TR | 350 pieces | 701234 |
| SMTU2477N-LF TR | 250 pieces | 701235 |
| SM2X2016-LF TR | 485 pieces | 701236 |

*Packaging: Tape&Reel (TR)

Mouser Electronics

Authorized Distributor

Click to View Pricing, Inventory, Delivery & Lifecycle Information:

Renata:

[SMTU2032-LF](#) [SMTU2477N-LF](#) [SMTU1632-LF.TR](#)