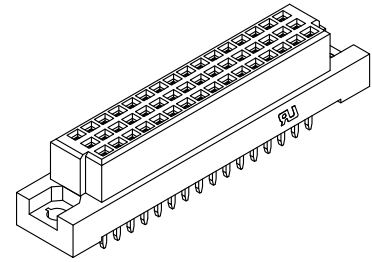
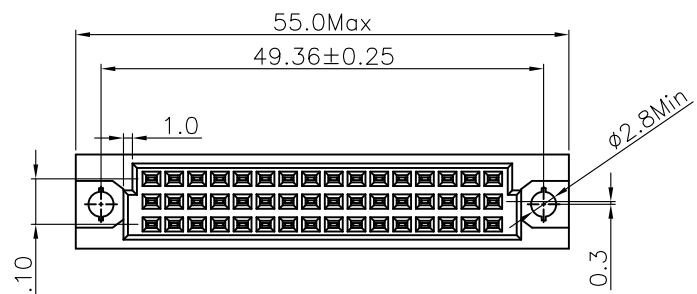


REV.	SPECIFICATION	ECN NO.	APPD.
R6		ECN220502	



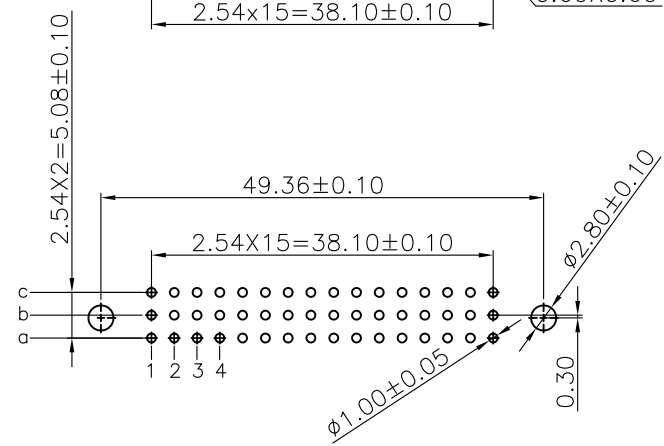
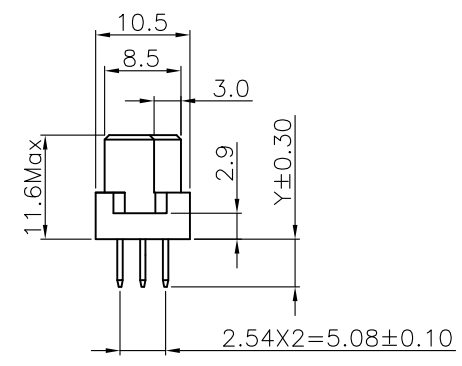
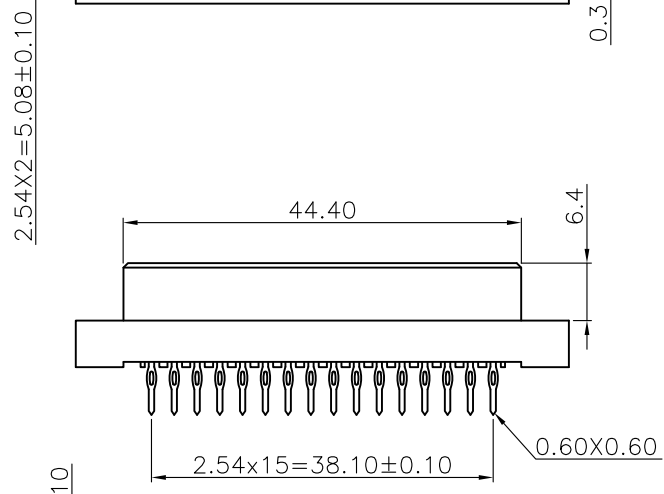
**Material and Plating:**

Housing: PBT UL94V-0. Beige.  
 Contacts: Copper Alloy  
 Gold Plated on Contact Area and 80u" Min Tin Plated on Press Fit over Nickel 50u" Min .

**Electrical Characteristics:**

Current Rating: 2 AMP.  
 Dielectric Withstanding Voltage: AC 1000V For 1 minute.  
 Insulator Resistance: 10<sup>6</sup>MΩ min. at DC 500V.  
 Contact Resistance: 20mΩ max. at DC 100mA.  
 Operating Temperature: -55°C ~+125°C .

**\*RoHS Compliant**



Series 9001- 1(2) 6 xx x C xx P A  
 1: 2.54mm  
 2: 5.08mm  
 6: Female  
 Position  
 1: Dip Length  
 2: Dip Length  
 W1: Dip Length  
 W2: Dip Length  
 A: Tray Package  
 P: Press Fit  
 00: G/F  
 10: 10u"  
 15: 15u"  
 30: 30u"  
 C: Dip Tin Contact Gold

	length	1	2	W1	W2
	Y	4.6	6.3	13	17
2.54mm	48	a b c			
	32	a - c			
5.08mm	16	a - -			
	24	a b c			
	16	a - c			
	8	a - -			
Pitch	Pin No.	Rows With Contacts	Contact Arrange		

P.C. Board Layout  
 Tolerance:(± 0.05)

Tolerances	Dwg. No.	9001D16017	Title:	9001 Series
x = ±0.5	Projection		DIN41612 Half	
.x = ±0.25	Unit	mm	Scale	1:1
.xx = ±0.15	Drawn By	ZY 05/05'22	C Type Female	
			P/N:	9001-1(2)6xxxCxxPA
			SHEET	1/1
			Ver.No.	R6