

Material:

Housing: Thermoplastic Polyester Glass Filled UL94V-0.

Contacts: Copper Alloy.

Electrical Characteristics:

Current Rating: 2 A.

Dielectric Withstanding Voltage: AC 1000V.

Insulator Resistance: 1000MΩ min.

Contact Resistance: 20mΩ max.

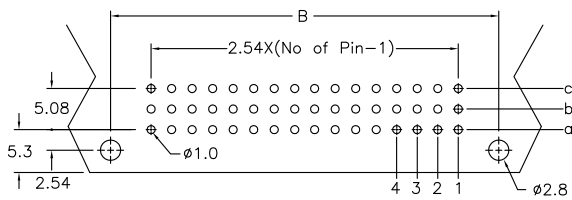
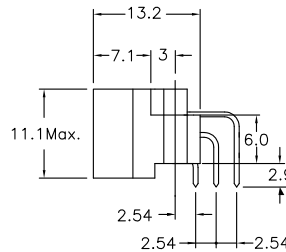
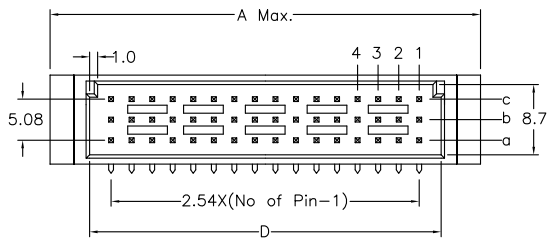
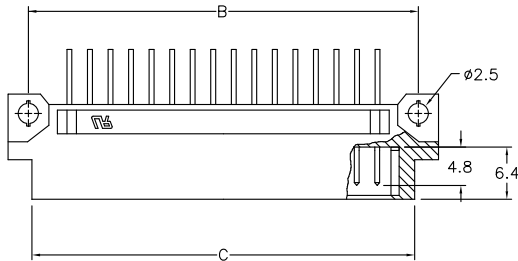
Operating Temperature: -55°C ~+125°C.

Features:

* Mates with Female 3Row Half

9001-16 Half C Type.

9001-18 Half R Type.



P.C. Board Layout

Dimension				
Position	A	B	C	D
48/32/24/16/8	54.00	48.26	47.40	44.60
30/20/15/10/5	38.10	33.02	32.16	29.36
Pitch	Position	Rows with Contacts	Contact Arrange	
2.54mm	48	a b c		
	32	a - c		
	30	a b c		
	20	a - c		
	16	a - -		
	10	a - -		
5.08mm	24	a b c		
	16	a - c		
	15	a b c		
	10	a - c		
	8	a - -		
	5	a - -		

<u>9001-</u>	<u>1</u>	<u>5</u>	<u>48</u>	<u>1</u>	<u>C</u>	<u>00</u>	<u>L1</u>	<u>A</u>
Series	1: 2.54mm 2: 5.08mm	5: Male	Position	1: Dip Length	C: Selective Gold Plated	00: G/F	Blank: W/O Lock L1: With Lock See Page CA03	A: Tray Package