

SPECIFICATIONS

Rated(额定参数): 300V,25A
 Dielectric strength(抗电强度): AC2000V/1 Minute
 Insulation Resistance(绝缘电阻):1000MΩ Min
 Contact Resistance(接触电阻):20mΩ Max
 Screw Torque(扭矩): 1.2Nm (10.53Lb.in)
 Wire Range(线径):12~22AWG
 Temp. range(操作温度): -40℃~+105℃
 MAX Soldering(瞬时温度):+250℃,5s

Housing Material(塑件): PA66 (UL94 V-0)
 Contact(端子): Brass, Tin plating(黄铜镀锡)
 Screw (螺丝): M4.0, Steel, Ni plating(钢 镀镍)

PITCH RANGE		NOMINAL DIMENSION RANGE	
IN MM	OVER	IN MM	OVER
TO 6	10	TO 30	60
TO 10	24	TO 30	60
TO 10	24	TO 60	100
±0.10	±0.15	±0.25	±0.30
		±0.30	±0.50
		±0.70	±1.00

Ordering Information

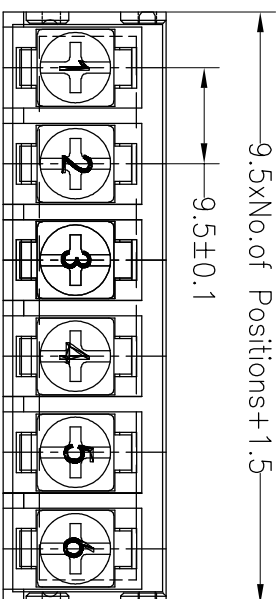
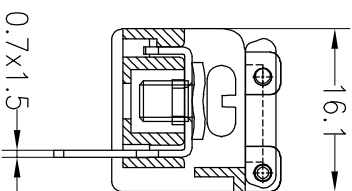
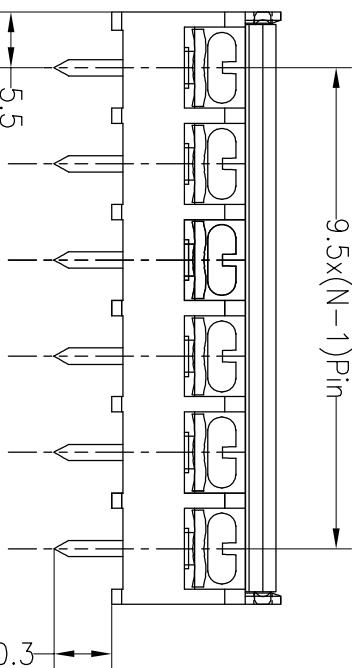
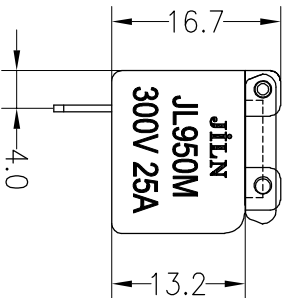
JL950M - 950 XX X X 1

Pitch
 762=7.62PH
 850=8.50PH
 900=9.00PH
 950=9.5PH
 100=10.0PH
 121=12.1PH

No. of pins
 2P~18P

Housing Color
 B=Black
 G=Green
 U=Blue
 R=Red
 W=White
 Y=Yellow
 O=Orange
 E=Grey

Packing
 O=Pe bag
 T=Tube
 A=Tray



OPERATION		DRAW		SCALE		FIT		TITLE:	
XX	±0.30	Yiyusheng	18.03.28	UNIT	mm	A4	1/1	PART NO. JL950M-950XXXXX1	
X:XX	±0.20	CHECK		SIZE		SHEET	1/1	9.5mm Terminal Blocks Female	
X:XXX	±0.10			PROU.					
Angle	±3'	APPROVE							
DIM	TOL	CHANGE							
REV	DATE	MODIFICATION DESCRIPTION							
A0	2018.03.28	NEW DRAWING							
1									

JIN 深圳市锦凌电子有限公司
 SHENZHEN JINLING ELECTRONIC CO.,LTD
 Tel: 86-755-2997-5806/5802 Fax: 86-755-2997-5992