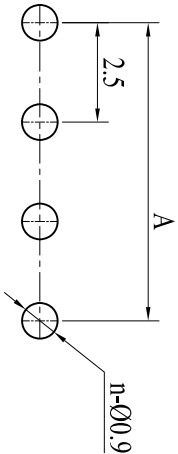
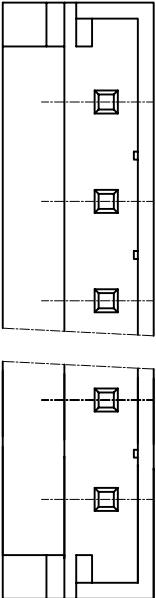
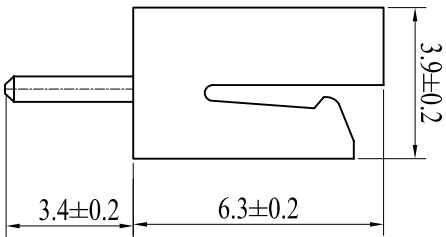
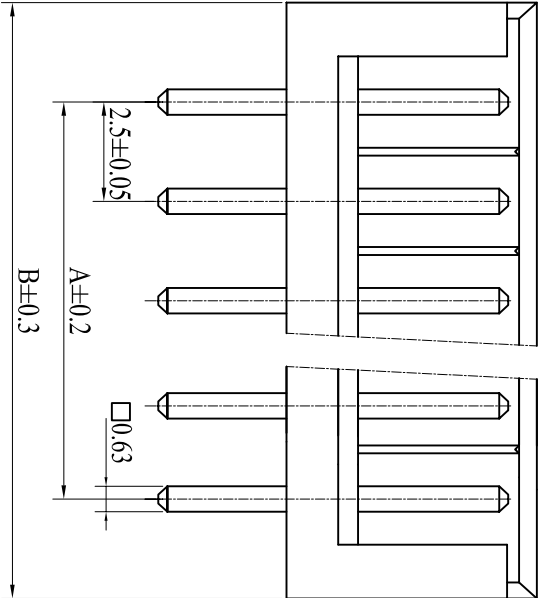


POLES	PART NO	DIMENSIONS(mm)	
		A	B
2	EH-2A	2.5	7.5
3	EH-3A	5.0	10.0
4	EH-4A	7.5	12.5
5	EH-5A	10.0	15.0
6	EH-6A	12.5	17.5
7	EH-7A	15.0	20.0
8	EH-8A	17.5	22.5
9	EH-9A	20.0	25.0
10	EH-10A	22.5	27.5
11	EH-11A	25.0	30.0
12	EH-12A	27.5	32.5
13	EH-13A	30.0	35.0
14	EH-14A	32.5	37.5
15	EH-15A	35.0	40.0



PCB 安装尺寸图

- 技术参数 (SPECIFICATIONS)
- ◆ 额定电压: 250V AC DC
 - ◆ Voltage rating: 250V AC DC
 - ◆ 额定电流: 3.0A AC DC MIN
 - ◆ Current rating: 3.0A AC DC MIN
 - ◆ 耐压值: 1000V AC/minute
 - ◆ Withstand voltage: 1000V AC/minute
 - ◆ 绝缘电阻: 1000MΩ MIN
 - ◆ Insulation resistance: 1000MΩ MIN
 - ◆ 接触电阻: 0.02Ω MAX
 - ◆ Contact resistance: 0.02Ω MAX
 - ◆ 工作温度: -25°C ~ +85°C
 - ◆ Working Temperature: -25°C ~ +85°C
 - ◆ 间距: 2.5 mm
 - ◆ Pitch: 2.5 mm
- 材料 (MATERIAL)
- ◆ 基座: 尼龙66
 - ◆ Water: Nylon66
 - ◆ 插针: 黄铜
 - ◆ Pin: Brass

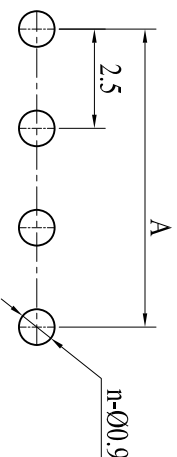
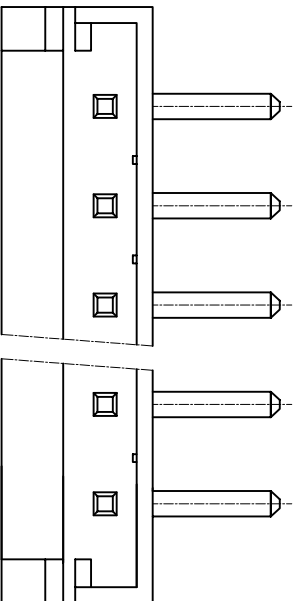
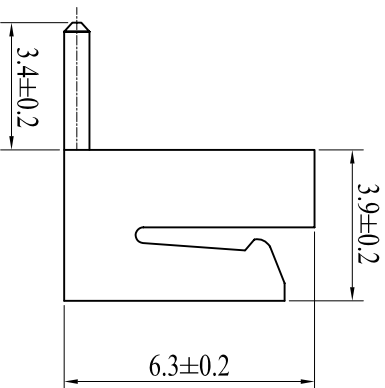
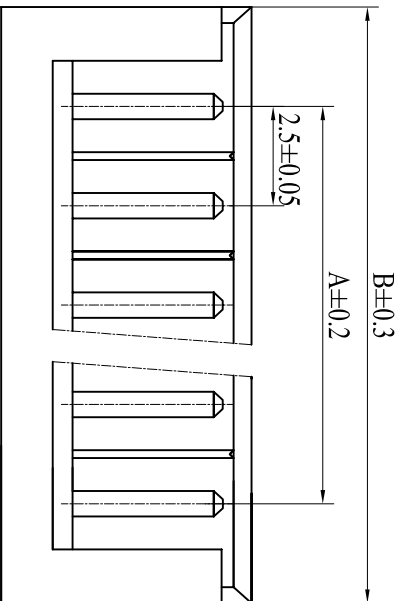
深圳市威尔杰电子有限公司										REV.		
GENERAL TOLERANCE			SCALE		DRAWIN		DATE		DWG. NO.		TITLT.	
XX.	±0.25	XXX.	±0.40	UNIT		CHECK		DATE		PARTS NO.		成品图
X.	±0.20	.XXX	±0.05	mm		丁泽宝		20131018		EH-nA		
.X	±0.15	X.°	±2°	SIZE		APPROVE		DATE				
.XX	±0.10	.X°	±1°	A4		般杰		20131018				
						</						

深圳市威尔杰电子有限公司

成品图

1/1

POLES	PART NO	DIMENSIONS(mm)	
		A	B
2	EH-2AW	2.5	7.5
3	EH-3AW	5.0	10.0
4	EH-4AW	7.5	12.5
5	EH-5AW	10.0	15.0
6	EH-6AW	12.5	17.5
7	EH-7AW	15.0	20.0
8	EH-8AW	17.5	22.5
9	EH-9AW	20.0	25.0
10	EH-10AW	22.5	27.5
11	EH-11AW	25.0	30.0
12	EH-12AW	27.5	32.5
13	EH-13AW	30.0	35.0
14	EH-14AW	32.5	37.5
15	EH-15AW	35.0	40.0



PCB 安装尺寸图

技术参数 (SPECIFICATIONS)

- ◆ 额定电压: 250V AC DC
 - ◆ Voltage rating: 250V AC DC
 - ◆ 额定电流: 3.0A AC DC MIN
 - ◆ Current rating: 3.0A AC DC MIN
 - ◆ 耐压值: 1000V AC/minute
 - ◆ Withstand voltage: 1000V AC/minute
 - ◆ 绝缘电阻: 1000MΩ MIN
 - ◆ Insulation resistance: 1000MΩ MIN
 - ◆ 接触电阻: 0.02Ω MAX
 - ◆ Contact resistance: 0.02Ω MAX
 - ◆ 工作温度: -25°C ~ +85°C
 - ◆ Working Temperature: -25°C ~ +85°C
 - ◆ 间距: 2.5 mm
 - ◆ Pitch: 2.5 mm
- 材料 (MATERIAL)
- ◆ 基座: 尼龙66
 - ◆ Water: Nylon66
 - ◆ 插针: 黄铜
 - ◆ Pin: Brass

深圳市威尔杰电子有限公司										TITLT.		REV.
GENERAL TOLERANCE				SCALE	DRAWIN	DATE	DWG. NO.		成品图		SHEET.	
XX.	±0.25	XXX.	±0.40	UNIT	CHECK	赵阿权	DATE	20131018				
X.	±0.20	.XXX	±0.05	mm	丁泽宝	DATE	20131018	PARTS NO.				
.X	±0.15	X.°	±2°	APPROVE	殷杰	DATE	20131018	EH-nAW				
.XX	±0.10	X.°	±1°	SIZE	A4					1/1		

深圳市威尔杰电子有限公司

A

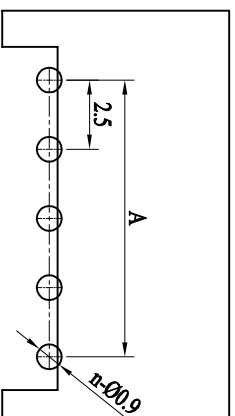
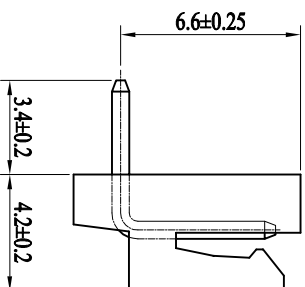
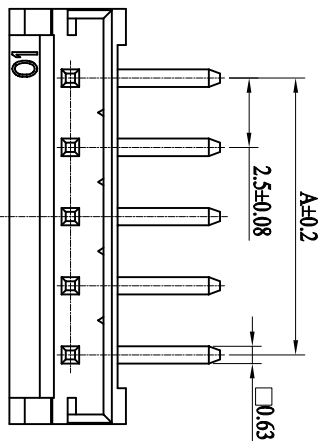
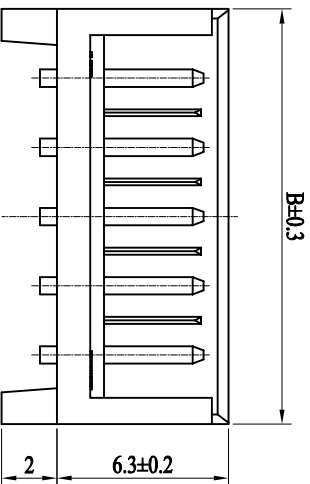
B

C

D

E

POLES	PART NO	DIMENSIONS(mm)	
		A	B
2	EH-2AWD	2.5	7.5
3	EH-3AWD	5.0	10.0
4	EH-4AWD	7.5	12.5
5	EH-5AWD	10.0	15.0
6	EH-6AWD	12.5	17.5
7	EH-7AWD	15.0	20.0
8	EH-8AWD	17.5	22.5
9	EH-9AWD	20.0	25.0
10	EH-10AWD	22.5	27.5
11	EH-11AWD	25.0	30.0
12	EH-12AWD	27.5	32.5
13	EH-13AWD	30.0	35.0
14	EH-14AWD	32.5	37.5
15	EH-15AWD	35.0	40.0



PCB 安装尺寸图

技术参数 (SPECIFICATIONS)

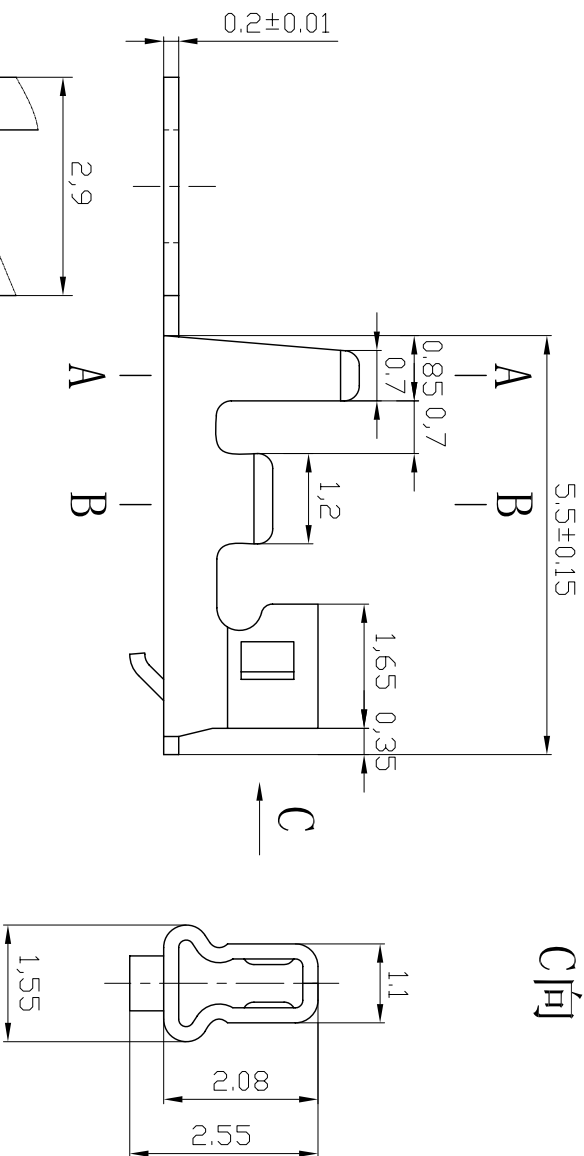
- ◆ 额定电压: 250V AC DC
- ◆ Voltage rating: 250V AC DC
- ◆ 额定电流: 3.0A AC DC MAX
- ◆ Current rating: 3.0A AC DC MAX
- ◆ 耐压值: 800V AC/minute
- ◆ Withstand voltage: 800V AC/minute
- ◆ 绝缘电阻: 1000M Ω MIN
- ◆ Insulation resistance: 1000M Ω MIN
- ◆ 接触电阻: 0.02 Ω MAX
- ◆ Contact resistance: 0.02 Ω MAX
- ◆ 工作温度: -25°C ~+85°C
- ◆ Working Temperature: -25°C ~+85°C
- ◆ 间距: 2.5 mm
- ◆ Pitch: 2.5 mm

材料 (MATERIAL)

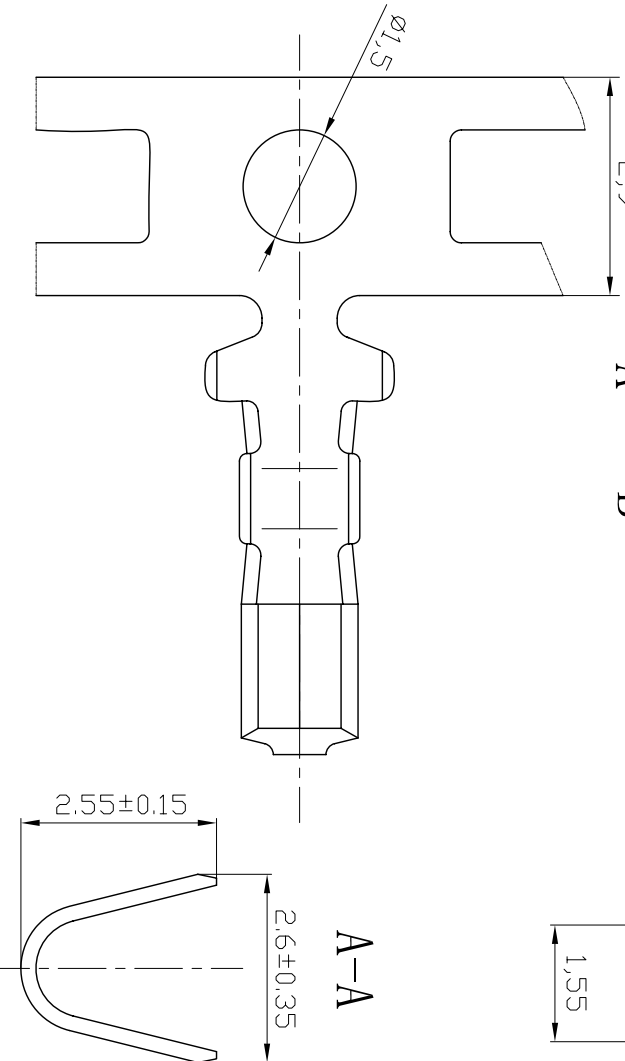
- ◆ 基座: 尼龙66
- ◆ Water: Nylon66
- ◆ 插针: 黄铜
- ◆ Pin: Brass

GENERAL TOLERANCE		SCALE		DRAWN		DATE	DWG. NO.		TITLT.		REV.
XX. ±0.25	XXX. ±0.40	UNIT mm	CHECK	张勤国	赵阿权	DATE	PARTS NO.	EH-nAWD	成品图	SHEET.	A
X. ±0.20	XXX. ±0.05					DATE					
X. ±0.15	X.° ±2°					DATE					
XX. ±0.10	X° ±1°	SIZE A4	APPROVE	丁泽宝		2014. 11. 25				1/1	

深圳市威尔电子有限公司



C向



A-A

B-B

技术参数 (SPECIFICATIONS)

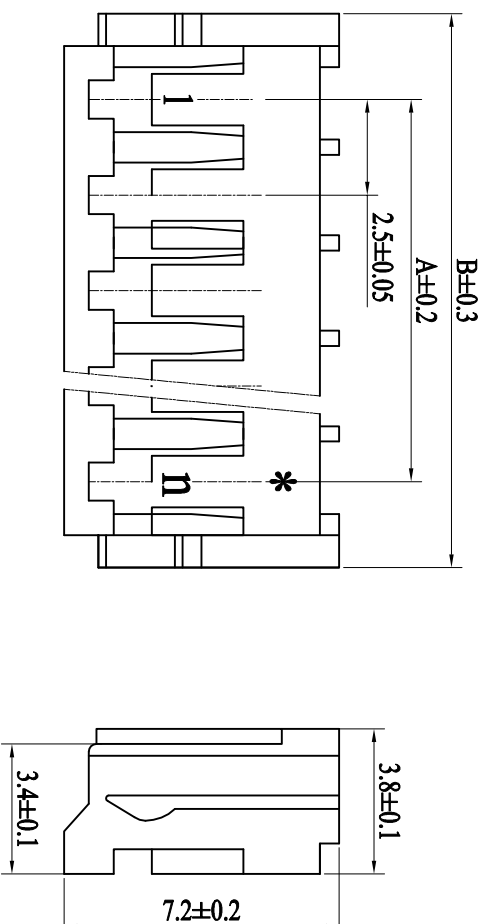
- ◆ 额定电压: 250V AC DC
- ◆ Voltage rating: 250V AC DC
- ◆ 额定电流: 3.0A AC DC MIN
- ◆ Current rating: 3.0A AC DC MIN
- ◆ 耐压值: 1000V AC/minute
- ◆ Withstand voltage: 1000V AC/minute
- ◆ 绝缘电阻: 1000M Ω MIN
- ◆ Insulation resistance: 1000M Ω MIN
- ◆ 接触电阻: 0.02 Ω MAX
- ◆ Contact resistance: 0.02 Ω MAX
- ◆ 工作温度: -25° C ~ +85° C
- ◆ Working Temperature: -25° C ~ +85° C
- ◆ 间距: 2.5 mm
- ◆ Pitch: 2.5 mm

材料 (MATERIAL)

- ◆ 端子: 磷青铜
- ◆ Terminal: Phosphor Bronze

GENERAL		TOLERANCE	SCALE		DRAWIN	DATE	DWG. NO.	TITLT.		REV.
XX.	±0.25	XXX.	±0.40	UNIT	CHECK	20131018	PARTS NO.	成品图		A
X.	±0.20	XXX	±0.05	mm	丁泽宝	20131018	EH-T			SHEET.
.X	±0.15	X.°	±2°	SIZE	APPROVE	20131018				1/1
.XX	±0.10	X°	±1°	A4	殷杰					

深圳市威尔杰电子有限公司

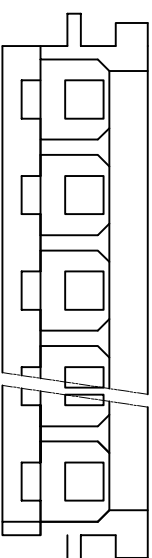


■ 技术参数 (SPECIFICATIONS)

- ◆ 额定电压: 250V AC/DC
- ◆ Voltage rating: 250V AC/DC
- ◆ 额定电流: 3.0A AC/DC MIN
- ◆ Current rating: 3.0A AC/DC MIN
- ◆ 耐压值: 1000V AC/minute
- ◆ Withstand voltage: 1000V AC/minute
- ◆ 绝缘电阻: 1000M Ω MIN
- ◆ Insulation resistance: 1000M Ω MIN
- ◆ 接触电阻: 20m Ω MAX
- ◆ Contact resistance: 20m Ω MAX
- ◆ 工作温度: -25°C ~ +85°C
- ◆ Working Temperature: -25°C ~ +85°C
- ◆ 间距: 2.5 mm
- ◆ Pitch: 2.5 mm

材料 (MATERIAL)

- ◆ 外壳: 尼龙66
Housing: Nylon66



B	7.0	9.5	12.0	14.5	17.0	19.5	22.0	24.5	27.0	29.5	32.0	34.5	37.0	39.5
A	2.5	5	7.5	10	12.5	15	17.5	20	22.5	25	27.5	30	32.5	35
孔数	2	3	4	5	6	7	8	9	10	11	12	13	14	15

深圳市威尔电子有限公司										TITL.T.		REV.	
GENERAL TOLERANCE				SCALE		DRAWIN		DATE		DWG. NO.		A	
XX. ±0.25		XXX. ±0.40		UNIT		CHECK		DATE		PARTS NO.		成品图	
X. ±0.20		.XXX ±0.05		mm				DATE		EH-nY		SHEET.	
X. ±0.15		X. ° ±2°		SIZE		APPROVE		DATE				I/I	
XX. ±0.10		X° ±1°		A4		